



**ANNEX A**  
**PERSONNEL AND EQUIPMENT**


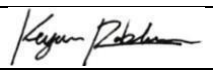
ANNEX A  
PERSONNEL AND EQUIPMENT

**TABLE OF CONTENTS**

TABLE OF CONTENTS	2
REVISION PAGE	3
LIST OF EFFECTIVE PAGES	5
PERSONNEL AND EQUIPMENT	6
NEWBERG, OREGON	9
KLAMATH FALLS, OREGON	10
SIMULATORS	12

ANNEX A  
PERSONNEL AND EQUIPMENT

**REVISION PAGE**

#	DATE	REVISED PAGES	SUMMARY OF CHANGES	SIGNATURE
0	31 Aug 2017	All	On Issue	Nigel Cooper
1	26 Jan 2018	7	Revised Cessna 172K/N to Cessna 172N/M	Nigel Cooper
2	29 Aug 2018	5	Updated Instructors and Positions	Avery Kunz
3	10 Jul 2019	2 - 8,10,11,12	Updated Training Facilities Newberg Additional Models of Approved Aircraft Updated Instructors and Positions Removal of non-certified Simulators	Avery Kunz
4	15 Sep 2019	4,5,6,7,11	Updated Instructors and Positions Removed unnecessary helicopter related text to make job descriptions more general. Updated List of Effective Pages Addition of Basic Aviation Training Device	
5	2 Mar 2019	6,7	Updated Instructors and Positions	
6	22 Jun 2020	6,7	Updated Instructors and Positions	Matt VanPelt
7	04 Jan 2021	10	Updated Equipment	Alison Plummer
8	19 Apr 2021	3,5-7,10-11	Updated Instructors and Positions, BATD	Alison Plummer
9	7 May 2021	3,4,6	Updated Instructors and Positions	Alison Plummer
10	21 June 2021	3,4,6-8, 10,11	Updated Instructors and Positions, BATD	Alison Plummer
11	9 July 2021	2,3,4,8	Updated Instructors	Alison Plummer
12	13 July 2021	3,4,11,12	BATD Approval, Updated Aircraft	Alison Plummer
13	23 July 2021	3,4,11	Updated Aircraft	Alison Plummer
14	24 Sept 2021	3,4,6-10,12	Updated Assistant Chief and personnel, updated facilities with addition of classrooms in Klamath Falls.	Alison Plummer
15	18 Oct 2021	3,6	Updated Instructors	Alison Plummer
16	28 Mar 2022	3,4,6,7,8,12	Instructor list updated, BATD updated, Updated Aircraft	Matt VanPelt
17	6 May 2022	3,4,6,7,8	Instructor list updated	Alison Plummer
18	10 June 2022	3,4,6,7,8	Instructor list updated	Alison Plummer
19	6 July 2022	3,4,7,8	Instructor list updated	Alison Plummer
20	23 August 2022	3,4,6,7,8	Instructor list updated	Alison Plummer
21	2 February 2023	3,4,6,7	Instructor list updated	Alison Plummer
22	23 June 2023	3,4,6,7,8,9,11	Instructor list updated	Alison Plummer
23	11 October 2023	3,4,6,7,8,9,11	Instructor list updated	Alison Plummer
24	8 Jan 2024	3,4,6,7,8,9,11	Instructor list updated	Alison Plummer
25	1 April 2024	3,4,6,7	Instructor list updated	Alison Plummer

ANNEX A  
PERSONNEL AND EQUIPMENT

26	12 July 2024	3,4,6,7	Instructor list updated	Alison Plummer
27	12 Sept 2024	3,4,6,7	Instructor list updated	Alison Plummer
28	29 Oct 2024	3,4,6,7	Instructor list updated	Alison Plummer
29	31 Oct 2024	4,8	Instructor list updated	Matthew Kreps
30	27 Feb 2025	7	Instructor list updated	Matthew Kreps
31	01 May 2025	9	Ground training facilities updated	Alison Plummer
32	05 Jun 2025	8	Instructor list updated	Matthew Kreps
33	10 July 2025	7,8	Instructor list updated	Alison Plummer

ANNEX A  
PERSONNEL AND EQUIPMENT

**LIST OF EFFECTIVE PAGES**

<b>Pg</b>	<b>Title</b>	<b>Date</b>	<b>Rev</b>
1	Title Page	08/31/2017	0
2	Table of Contents	7/9/2021	11
3	Revision Pages	5/1/2025	31
5	List of Effective Pages	5/1/2025	31
6	Overview, Training Requirements, Personnel, and Qual.	09/15/2019	4
7	Helicopter Qualifications Table	7/10/2025	33
8	Airplane Qualifications Table	7/10/2025	33
9	Classrooms and Equipment	5/1/2025	31
10	Approved Aircraft Table	7/23/2021	13
12	Simulators	03/28/2022	16

ANNEX A  
PERSONNEL AND EQUIPMENT

**PERSONNEL AND EQUIPMENT**

1. **Overview:** The purpose of this document is to provide an overview of training personnel and equipment in accordance with FAR §141.55. It details who holds each position, who is qualified to teach which course and in which aircraft, details all equipment, aircraft and simulators used for flight training. It refers to individual Training Course Outlines (TCOs) and should be read in conjunction with those TCOs.
2. **Training Requirements:** All instructors will undergo annual Part 141 refresher training to satisfy the requirements of FAR §141.79. The relevant Chief Flight Instructor is responsible for the conduct and record keeping of such training.

**3. Personnel and Qualifications:**

**Director of Training:** The Director of Training (DOT) is responsible for the oversight and regulatory compliance of all training including personnel, equipment and facilities. The DOT must hold as a minimum, a Commercial Pilot certificate with Instructor and Instrument privileges (in any Category and Class).

**Chief Flight Instructor:** The Chief Flight Instructor is responsible for ensuring that FAR §141.85 Chief Instructor Responsibilities are met. The Chief Flight Instructor must hold as a minimum a Commercial Pilot Certificate, in category and class, with Instructor and Instrument privileges and meet the experience requirements stipulated under FAR §141.35.

**Assistant Chief Flight Instructor:** The Assistant Chief Flight Instructor responsibilities will be delegated by the Chief Flight Instructor. The Assistant Chief Flight Instructor must hold as a minimum a Commercial Pilot Certificate, in category and class, with Instructor and Instrument privileges and meet the experience requirements stipulated under FAR §141.36.

**Check Instructor:** Experienced Instructors may hold the qualification of Check Instructor and conduct the various stage checks as detailed in relevant TCO's. Check Instructors undergo training as prescribed by FAR §141.37.

**Line Instructor:** A Line Instructor's primary duty is to carry out flight and ground instruction in accordance with relevant TCO's or Training Plans. As a minimum, Line Instructors must hold a Commercial Pilot Certificate, in category and class, with a flight instructor certificate.

**Ground Instructor.** Ground Instructors must meet the requirements of FAR §141

ANNEX A  
PERSONNEL AND EQUIPMENT

HELICOPTER QUALIFICATIONS TABLE						
Relevant Courses/Ratings Rotorcraft – Helicopter (Includes Additional Ratings) <ol style="list-style-type: none"> <li>1. Private Pilot Course Rotorcraft, Helicopter</li> <li>2. Instrument Rating Course Rotorcraft, Helicopter</li> <li>3. Commercial Pilot Rotorcraft, Helicopter</li> <li>4. Additional Aircraft Rating, Private Pilot Course Rotorcraft, Helicopter</li> <li>5. Additional Aircraft Rating, Instrument Rating Course Rotorcraft, Helicopter</li> <li>6. Additional Aircraft Rating, Commercial Pilot Rotorcraft, Helicopter</li> <li>7. Flight Instructor Rotorcraft, Helicopter</li> <li>8. Flight Instructor Instrument Rotorcraft, Helicopter</li> <li>9. Additional Flight Instructor Course, Rotorcraft, Helicopter</li> <li>10. Special Curricula Course – Commercial Instrument Rotorcraft, Helicopter</li> <li>11. Special Preparation Course – Turbine Transition Rotorcraft, Helicopter</li> <li>12. Special Preparation Course – Rotorcraft External Load Operations</li> <li>13. Special Preparation Course – VFR Refresher Rotorcraft, Helicopter</li> </ol>						
Chief Instructor: Lars Mehlum, (541) 913-6476				Primary Location: Newberg, OR		
Name	Cert. #	Line Instructor	Check Instructor	Assistant Chief Instructor	Chief Instructor	Email
Lars Mehlum*	3778024	X	X	X	1,2,3,4,5,6,7,8,9,10,13	lmehlum@flypureflight.com
Matt VanPelt	3375464	X	1,2,3,4,5,6,7,8,9,10,11,12,13	X	11,12	mattv@flypureflight.com
Ty Burlingham	3170566	1,2,3,4,5,6,7,8,9,10,11,12,13	11,12			tburlingham@flyprecision.com
David Gilliland	4085664	X	1,2,3,4,5,6,7,8,9,10,13			dlgilliland2@gmail.com
Colt Fridley	3721723	1,2,3,4,5,6,7,8,9,10,11,12,13	1,2,3,4,5,6,7,8,9,10,13			coltfridley@gmail.com
James Wiganowsky	4331871	X	X	1,2,3,4,5,6,7,8,9,10,13		jamesw@flypureflight.com
Curtis Wilber	4464414	X	1,2,3,4,5,6,7,8,9,13			cwilber@flypureflight.com
Craig Hansen	4598845	X	1,2,3,4,5,6,8			chansen@flypureflight.com
* Denotes Director of Training. X denotes authorization with additional role.						# Ground Instructor Only

ANNEX A  
PERSONNEL AND EQUIPMENT

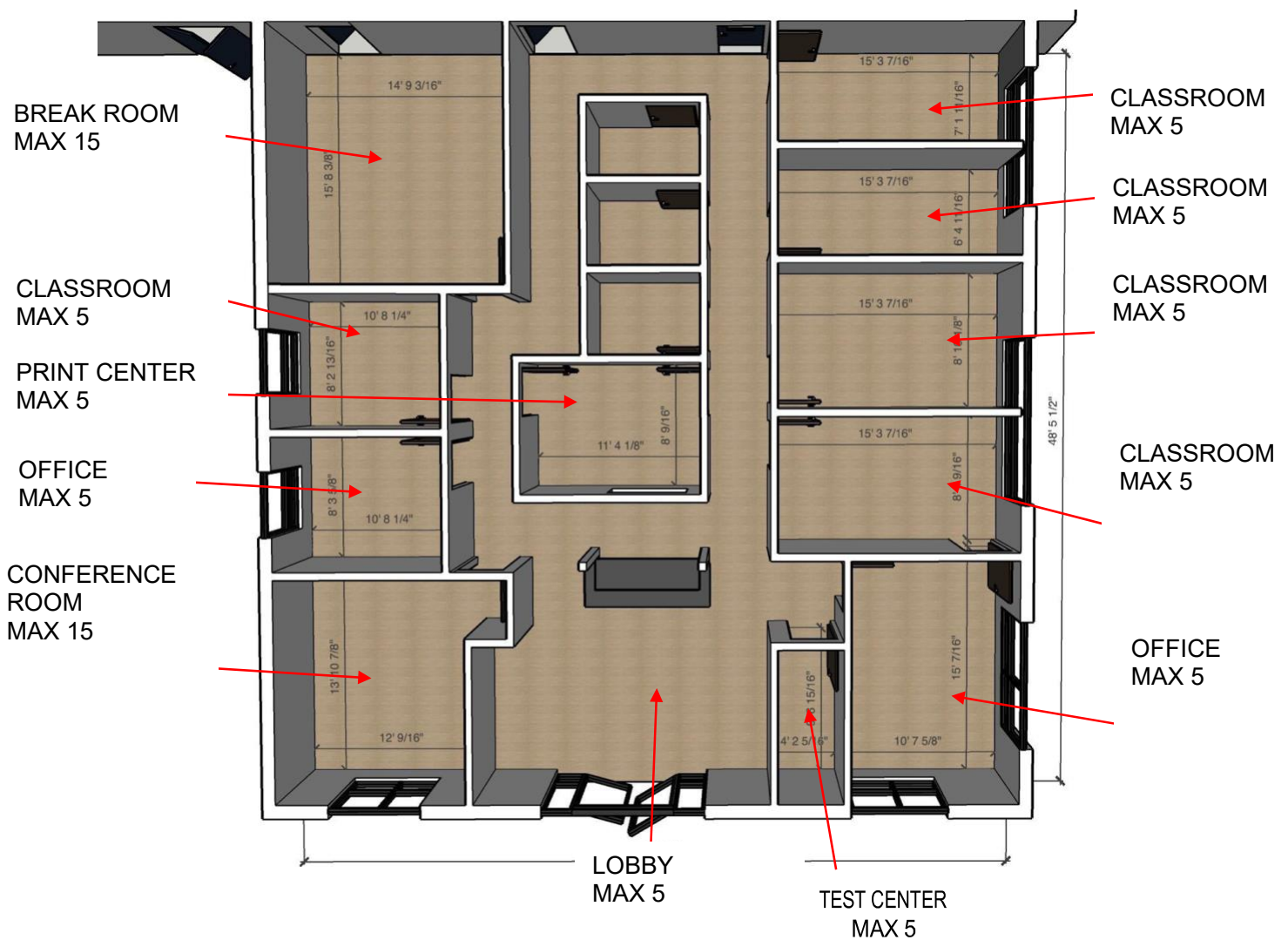
AIRPLANE QUALIFICATIONS TABLE						
Relevant Courses/Ratings Airplane – SEL (Includes Additional Ratings) <ol style="list-style-type: none"> <li>1. Private Pilot Course Airplane, Single Engine Land</li> <li>2. Instrument Rating Course Airplane, Single Engine Land</li> <li>3. Commercial Pilot Airplane, Single Engine Land</li> <li>4. Additional Aircraft Rating, Private Pilot Course Airplane, Single Engine Land</li> <li>5. Additional Aircraft Rating, Instrument Rating Course Airplane, Single Engine Land</li> <li>6. Additional Aircraft Rating, Commercial Pilot Airplane, Single Engine Land</li> <li>7. Additional Aircraft Class Rating, Commercial Pilot Airplane, Multi Engine Land</li> <li>8. Flight Instructor Airplane, Single Engine Land</li> <li>9. Flight Instructor Instrument, Airplane, Single Engine Land</li> <li>10. Special Curricula Course – Commercial Instrument Airplane, Single Engine Land</li> </ol>						
Chief Instructor: Lars Mehlum (541) 913-6476				Primary Location: Newberg, OR		
Name	Cert. #	Line Instructor	Check Instructor	Assistant Chief Instructor	Chief Instructor	Primary Location
Lars Mehlum*	3778024	X	X	X	1,2,3,4,5,6,7,8,9,10	lmehlum@flypureflight.com
Matthew VanPelt	3375464	X	1,2,3,4,5,6,7,8,9,10			mattv@flypureflight.com
Ty Burlingham	3170566	X	1,2,3,4,5,6,8,9,10			tburlingham@flyprecision.com
Daniel Buzalsky	4336575	X	X	1,2,3,4,5,6,8,9,10		danielb@flypureflight.com
Colt Fridley	3721723	X	1,2,3,4,5,6,8,9,10			coltfridley@gmail.com
Matthew Kreps	3421105	X	1,2,3,4,5,6,7,8,9,10	7		mkreps@flypureflight.com
Donavan Parsons	4066318	1,2,3,4,5,6,7,8,9,10	1,2,3,4,5,6,8,9,10			dparsons@flypureflight.com
Brandon McEwen	4356805	1,2,3,4,5,6,7,8,9,10	1,2,3,4,5,6,8,9,10			bmcewen@flypureflight.com
Claude Karam	2457152	X	1,2,3,4,5,6,8,9,10			claudio@trazzafoods.com
Garrett Mitchell	4738407	1,2,3,4,5,6,7,8,9,10	1,2,3,4,5,6,9,10			gmitchell@flypureflight.com
* Denotes Director of Training. X denotes authorization with additional role.				# Ground Instructor Only		



ANNEX A  
PERSONNEL AND EQUIPMENT

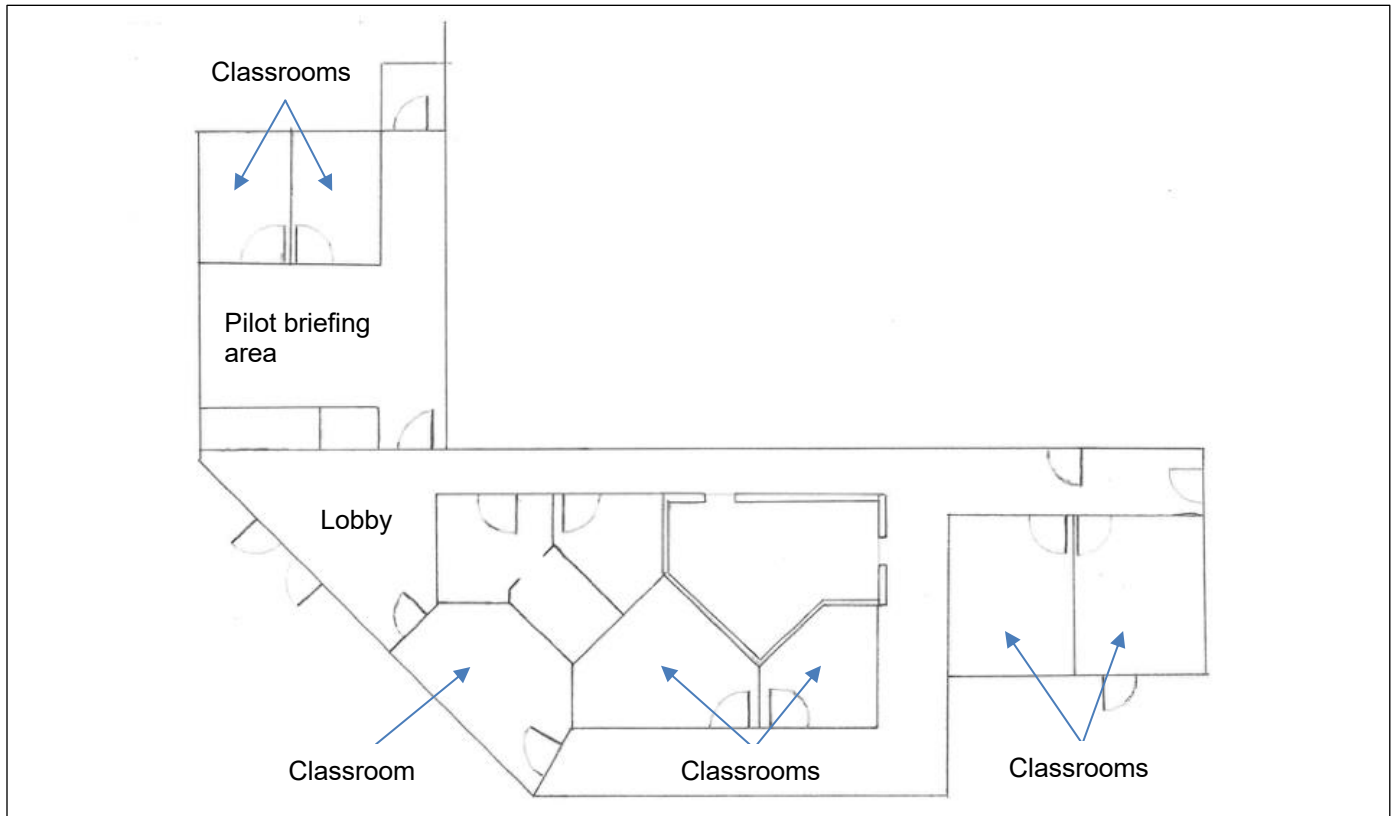
- 4. Classrooms, Briefing Areas, Flight Planning Areas and Equipment:** The following diagrams represent the floor plans of classrooms, briefing and flight planning areas at their respective locations. Each classroom is furnished with tables and chairs, whiteboard and markers, computer and screen and is used for the purpose of delivering ground instruction. Briefing areas are used for the purpose of pre/post flight briefing and are equipped with desks and chairs. Flight Planning areas are equipped with a desk and internet computer and are used for the purpose of flight planning. Weather briefings and NOTAMs can be obtained through either the internet or briefing office via telephone. Other flight planning information and equipment is provided in this area such as weight and balance information, navigation log cards and risk assessment tools. The maximum number of personnel permitted in each space is annotated on the plan in accordance with FAR §141.55.

**NEWBERG, OREGON**



ANNEX A  
PERSONNEL AND EQUIPMENT

**KLAMATH FALLS, OREGON**  
**Kingsley Field (KLMT)**  
**2977 Stinson Way**



**Klamath Community College Campus**



ANNEX A  
PERSONNEL AND EQUIPMENT

- 5. Approved Aircraft:** The following tables detail the aircraft used for delivering flight instruction. All aircraft used under Part 141 meet the provisions of FAR §141.39:

<b>ROTORCRAFT - HELICOPTER</b>		
<b>Courses (includes additional ratings)</b>	<b>Aircraft</b>	<b>Simulator</b>
Private Pilot Instrument Rating Commercial Pilot Certified Flight Instructor Certified Flight Instructor Instrument Rating Special Curricula Course – Commercial Instrument Special Preparation Course – VFR Refresher	Cabri G2 B206B3/L4 AS350B2/B3/B3e	N/A
Special Preparation Course - Turbine Transition	B206B3/L4 AS350B2/B3/B3e	N/A
Special Preparation Course - External Load	B206B3/L4 AS350B2/B3/B3e	N/A

\* Special equipment includes Lines, Hooks, Loads, Attaching Equipment, Fire Buckets, and Cameras when necessary to complete lesson objectives

<b>AIRPLANE – SEL / MEL</b>		
<b>Courses (includes additional ratings)</b>	<b>Aircraft</b>	<b>Simulator</b>
Private Pilot Instrument Rating Commercial Pilot Certified Flight Instructor Certified Flight Instructor Instrument Special Curricula Course – Commercial Instrument	C-172 N/M PA-28R-200 PA-23	Redbird Flight Simulator, Model TD2 (BATD)  Redbird FMX (AATD)

ANNEX A  
PERSONNEL AND EQUIPMENT

**SIMULATORS**

Redbird Flight Simulations, Inc. Model TD2  
Airplane Single Engine Land  
Basic Aviation Training Device (BATD)

The device(s) is physically located in the designated simulator room in Newberg and Klamath Falls.

In accordance with the letter dated October 24, 2018 the device is authorized for use within guidelines, and Pureflight Aviation Training will be adding guidelines to its Airplane Single Engine Land curricula only.

Redbird Flight Simulations, Inc. FMX Full motion  
simulator set as Airplane Single Engine Land  
Advanced Aviation Training Device (AATD)

This device is located within the simulator facility at Klamath Falls and may be used as a BATD in applicable training.