

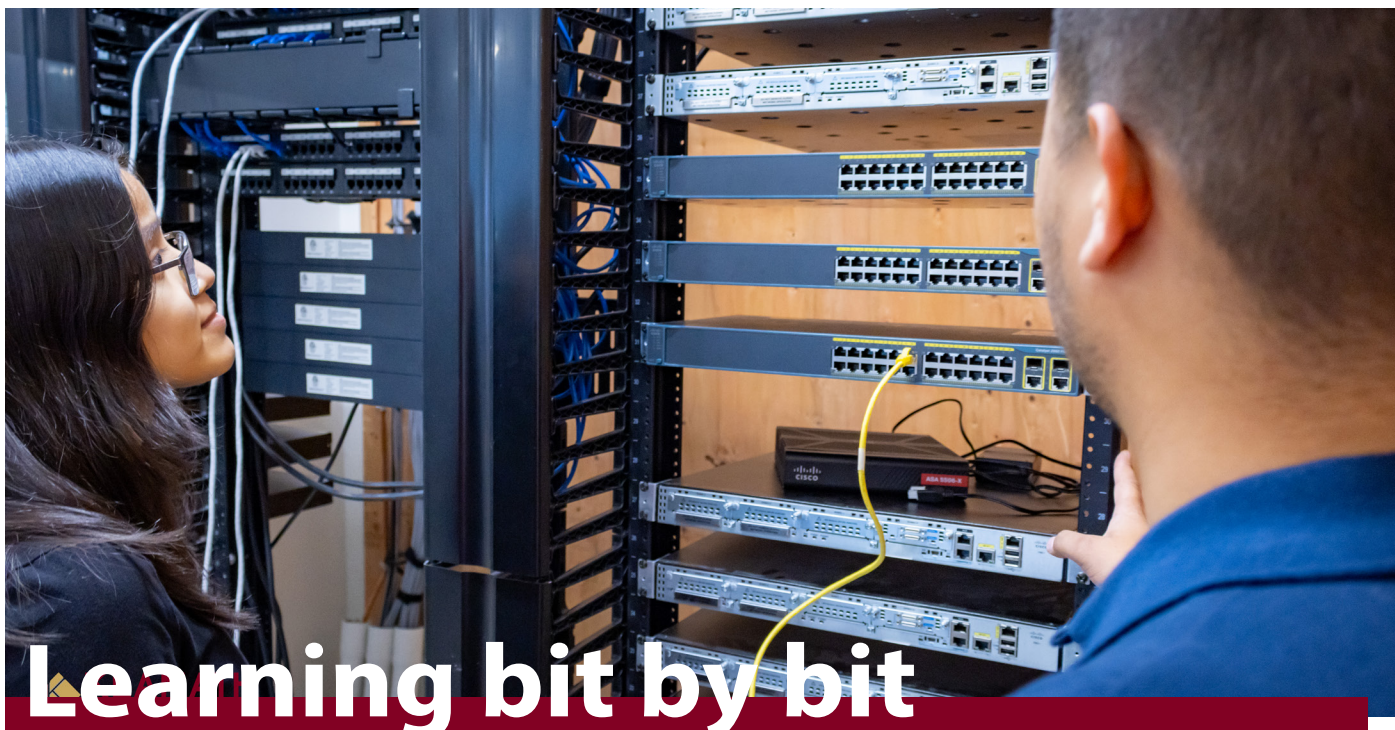
BYTE-SIZED EDUCATION

Klamath Community College **2023 Fall**

Academic Fall Course Schedule

Cybersecurity & Networking page 2

Fall Term starts September 25



Learning bit by bit

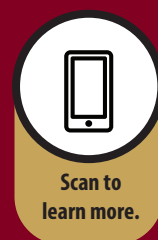
Want to work with technology, but don't know where to start? The new Computer Systems Fundamentals certificate, and career pathway certificate at KCC will help you gain the knowledge and skills you need to be successful working with networks and hardware.

The Computer Systems Fundamentals certificate is designed to give graduates an advantage in entry-level information systems (IS) positions. It features intensive hands-on experience working with networks, hardware, and software so you will graduate job-ready! All coursework can be completed in our state-of-the-art computer lab.

At only 15 credits the Computer Systems Fundamentals career pathway certificate can be completed in as little as a single term. The career pathway certificate is perfect for students who are new to IS technology and looking for an entry point into the field and is designed to be completed in one year.

Want to go further? Continue on at KCC with the Cybersecurity and Networking Associate of Applied Science degree. Curriculum includes an internship with a local company's IS department, providing real job experience for your resume. In two years you could be working in the high-paying and highly in-demand field of cybersecurity!

To learn more visit
www.klamathcc.edu/cybersecurity





Welcome! ¡Bienvenidos!

4

KCC Administration

5

Registration

6

Calendar, Tuition & Fees

7

Student Resources

9

Student Life

10

Degrees & Certificates

11

Campus Safety

12

Campus Map

14

Courses A-Z

Use these tools to connect with a Student Success Advisor!

New to
KCC?

register TODAY
in Founders Hall
(Bldg. 9)

Skip the
LINE!

Make an Enrollment
Appointment NOW!



Download the
QLess App



Text 'klamathcc' to:
541-612-3482



Use the Kiosk in
Founders Hall



Website:
kiosk.us1.qless.com/kiosk/app/home/21243

3

www.klamathcc.edu | Fall 2023 | 541-882-3521

KCC Mission

Klamath Community College provides accessible, quality education and services in response to the diverse needs of the student, business, and community.

The College supports student success in workforce training, academic transfer, foundational skills development, and community education.

Accreditation

Klamath Community College is accredited by the Northwest Commission on Colleges and Universities.

Equal Opportunity Policy

It shall be the policy of the Klamath Community College District to affirm the rights of all individuals to equal education, activities, facilities, and employment without regard to age, sex, disability, national origin, race, marital status, religion, or sexual orientation in accordance with federal and state laws. Klamath Community College complies with Titles VI and VII of the Civil Rights Act of 1964, Title IX of the Educational Amendments of 1972, and Section 504 of the Rehabilitation Act of 1973, and Title II of the Americans with Disabilities Act of 1990, and any amendments thereto.

Inquiries or grievances concerning the application of these laws and regulations to the College may be directed to Klamath Community College's Executive Director of Human Resources and General Counsel at 7390 South 6th St., Klamath Falls, OR 97603 or at 541-882-3521 or to the Office of Civil Rights, U.S. Department of Education, 915 Second Ave. Room 3310, Seattle, WA 98174-1099.

Accommodations

If a person with a disability needs assistance in order to attend or participate in a college event or meeting, please notify the Disability Specialist at 541-882-3521 within three days of the meeting.



A note from a KCC partner



The Klamath County Economic Development Association (KCEDA) is the region's leading agency in business development, focused on stimulating growth through three pillars: recruitment, expansion, and scalable entrepreneurship. Over many years, Klamath Community College (KCC) has been frequently involved with our work, serving as a collaborative partner on workforce endeavors tied to recruiting new businesses and assisting local businesses' long-term growth. The college has taken great effort to structure itself so it may be highly adaptable and flexible to the ever-changing needs of industry. The school's leadership regularly participates in site visits we have with companies that have worldwide reach, and uses these engagements to create customized curriculum to support the workforce needs of businesses.

There are numerous examples of how KCC has advanced its programming in ways which serve our community and economy, as the college is constantly demonstrating endless creativity and innovation to accommodate the needs and opportunities of Klamath County. This is evidenced in its partnerships with groups that have international impact (NASA, Amazon, Lithia Motors, etc.), involvement with The Klamath Promise education initiative, forging relationships to establish the Southern Oregon Higher Education Consortium, creating improved credit transfer agreements, expanding the access of their online educational platform, and securing funding for the new Apprenticeship Center, to provide additional education and training to meeting the needs of a diversified economy. Talent is developed at KCC, providing the platform for their students to excel in an ever-changing economic environment, truly education at the speed of life.

Because of this partnership, and a strategic emphasis on community, KCC has been a catalyst for rewriting the narrative of what community colleges are capable of. KCC's ongoing commitment to continuous improvement and economic impact has allowed for the institution to consistently achieve successes in the higher education space unlike any other. Its focus on development of all forms is on full display in how active a partner it is with stakeholders throughout the area, having these dialogues pave the way for our workforce to grow stronger. We at KCEDA are tremendously proud of having KCC be a close partner to our organization, and know its work will play an instrumental role in the economic vitality of this region for years to come.

Randy G. Cox
CEO/Executive Director
Klamath County Economic Development Association

KCC Administration

KCC Board of Education

- Zone 1: Kate Marquez
- Zone 2: Linda Weatherford
- Zone 3: Vacant
- Zone 4: Dave Jensen
- Zone 5: Linda Dill
- Zone 6: Raymond Holliday
- Zone 7: Richard Harrington

Student Board Member

(non-voting)
Emilie Ramos
ASKCC President



Dr. Roberto Gutierrez
President



Jamie Jennings
VP of Academic Affairs



Geoff LaHaie
VP of Administrative Services



Gail Schull
VP of Student Affairs



Charles Massie
Vice President of External Programs



Josh Guest
Executive Director of Human Resources and General Counsel

Registering at KCC Has Never Been Easier!

New students start here

1

Step 1 - Complete KCC admission form

Available online at www.klamathcc.edu/admissions or in-person inside Founders Hall (Building 9) at 7390 South 6th Street or call 541-882-3521.

2

Step 2 - Apply for Financial Aid

Students who wish to receive Federal Financial Aid should apply at studentaid.gov. Apply as early as possible.

3

Step 3 - Meet with Student Services

Meet with KCC Student Services online or in person to determine if you need a placement test and to register for classes inside Founders Hall at 7390 South 6th Street or call 541-882-3521.

4

Step 4 - Purchase textbooks

Textbooks may be purchased at the KCC Bookstore in Founders Hall and at bookstore.klamathcc.edu. If financial aid is complete, students can charge books to their student account at the bookstore. For more information please visit bookstore.klamathcc.edu.

Current students start here

1

Step 1 - Meet with your academic advisor

2

Step 2 - Register for classes

Save time by using web registration on mykcc.klamathcc.edu.

3

Step 3 - File a FAFSA On the Web

Students must file a Free Application for Federal Student Aid (FAFSA) every year for the upcoming academic year (summer-spring terms) if they wish to receive financial aid. Check your online account to make sure everything is ready to go for the upcoming term.

4

Step 4 - Purchase textbooks

Textbooks may be purchased at the KCC Bookstore in Founders Hall and at bookstore.klamathcc.edu. If financial aid is complete, students can charge books to their student account at the bookstore. For more information please visit bookstore.klamathcc.edu.



Pay for it like a BO\$\$
There are a number of ways to
finance your education.

- FILE YOUR FAFSA EARLY! Open in October.
- Ask about Pell Grants. 60% of KCC students qualify for Pell!
- Apply for other grants at oregonstudentaid.gov/grants. You may qualify for free tuition!
- Look into Oregon Promise. You may qualify for two years of tuition - FREE!
- Transferring to Oregon Tech? Join the Badger to Owl Connection and save thousands.
- Take 15 or more credits through our 15 to Finish program and earn three free lecture credits.
- Apply for scholarships through the KCC Foundation or other sources listed on the website.

For more information about financing your KCC experience, call 541-880-2352, see a financial aid representative in Founders Hall, or visit www.klamathcc.edu/financial-aid TODAY!

Calendar, Tuition & Fees

Academic Calendar

Fall Term 2023

Register now! Orientation is now mandatory for new students. All degree-seeking students must speak with an academic advisor before registering for classes.

Sept. 25	Classes Begin
Sept. 29	Last Day to Drop or Add Course (instructor permission required after classes begin) Last Day to Request a Refund
Oct. 30	Winter Term Registration Opens
Nov. 10	No School - Veterans Day (Observed)
Nov. 17	Last Day to Withdraw with a 'W'
Nov. 23-24	No School - Thanksgiving Holiday
Dec. 4-8	Final Exams
Dec. 8	Last Day of Term
Dec. 22, 25	No School - Christmas Holiday
Jan. 1	KCC Closed - New Year's Day Holiday



KCC IS HIRING

KCC is hiring for several staff and faculty positions. Join our dynamic team and contribute to a thriving educational community. Apply now and make a positive impact on students' lives.

WWW.KLAMATHCC.EDU/JOBS

Tuition, Fees, and Funding

TUITION & FEES

Current tuition information can be found at www.klamathcc.edu/tuition

SCHOLARSHIPS

General scholarship information can be found at www.klamathcc.edu/scholarships

KCC Foundation scholarships can be found at www.klamathcc.edu/foundation-scholarships

OTHER FUNDING

Emergency funds
www.klamathcc.edu/foundation

STEP/SNAP/TANF JOBS
www.klamathcc.edu/step

Payment

Tuition and fees are due by the first day of class; accounts are considered past due after this date. Students must pay their account in full or have a completed financial aid application filed by this date. The college accepts all traditional forms of payment, including cash (U.S. dollars only), checks, MasterCard, VISA, Discover, debit cards, and payments online. Third-party payment arrangements are also acceptable, which include agency or company payment authorizations, financial aid, scholarships, and veterans educational benefits. It is the student's responsibility to ensure that written third-party authorization is received by the college. Installment plans are available for students with a minimum balance of at least \$275. For more information on setting up an installment agreement and making payments, please contact the cashier at 541-880-2237.

A late fee of \$25 may be assessed on student accounts that are past due. This fee may be assessed up to three times during the term. Failure to make timely payments or to make satisfactory payment arrangements by the due date may result in late fees and/or administrative withdrawal from classes. Prior term unpaid balances must be paid in full before registering for another term. Other college services such as grades, transcripts, diplomas, registration privileges, or any combination thereof may be withheld if students do not make satisfactory arrangements to meet their financial obligation to the college. KCC and Oregon Tech provide concurrent notification to one another of student holds.

KCC Bookstore

Textbooks for Klamath Community College courses are available at the KCC Bookstore. The bookstore stocks new and used textbooks, school and art supplies, KCC clothing and logo items, graduation regalia and an assortment of food and beverages. The bookstore is located in Founders Hall, Building 9.

During specific time periods, current KCC students receiving federal financial aid may be eligible to charge textbooks and school supplies to their student accounts. At the end of the term, students may sell books back to the bookstore.

For more information, visit bookstore.klamathcc.edu.

KCC Career Services Center

The KCC Career Services Center, located in Building 4, Room 415, is your one-stop-shop for help with career counseling, advising, and coaching, including individualized assistance and/or workshops for the following topics:

- Resume and cover letter writing
- Filling out applications
- Behavioral and traditional interviewing
- Dressing for interviews, office visits, and work
- Job search techniques
- Networking with employers
- Mock interviews
- Job fairs
- Labor market research/career exploration assessments to find a career based on your interests

Community Resource Benefits Navigator

The Community Resource Benefits Navigator coordinates a wide range of resources, assist students in evaluating and addressing their specific barriers, and ensures students are aware of all the available resources and benefits, including:

- Referring students to on-campus resources.
- Referring students to external partners.
- Connecting students to local, state, and federal benefits and resources by:
 - Determining eligibility,
 - Assisting students with the application process,
 - Ensuring students maximize available resources and benefits.

Contact the Community Resource Benefits Navigator at kcc.benefits.navigator@klamathcc.edu

Accessibility Support Services

Accessibility Support Services are available for students with documented disabilities. Students can meet with the Accessibility coordinator to help set up accommodations for courses. Accommodations can include extra time on tests, a dedicated note taker, and more.

Accessibility Support Services can be contacted at kcc.disability@klamathcc.edu

The Learning Resource Center

The Learning Resource Center (LRC), encompassing the Library, Testing Center and Tutoring Center, is the gateway to academic success. Located in Founders Hall, the LRC supports students, staff, faculty, and community learners by creating a welcoming atmosphere where no question is too big or too small. The LRC provides study space, access to research resources (both print and electronic), tutoring, testing, computers, printing, copying, scanning, and much more! KCC students have access to the online SAGE Library System, a collection of over 75 libraries in Eastern Oregon. Many of the LRC's resources can be accessed off campus.

Military Services

KCC strives to embrace United States military service members, veterans, and spouses as students and to ensure their success on campus. KCC's Campus Veterans Resource Center staff can help you work out your financial aid and education needs whether you are looking to pursue traditional training or degrees, attain a Community College of the Air Force degree or looking to take online courses through General Education Mobile. For more information, call 541- 880-2214 or email veterans@klamathcc.edu.

JOBS

JOBS services are available for SNAP recipients of all ages who are seeking a job or career education that will allow them to seek, or return to, work in less than one year.

Services available:

- Career coaching
- GED and English as a Second Language programs
- Academic skill building
- Career Pathways training
- Internships / work experience
- Connection to resources and scholarships (for eligible participants)

Contact the JOBS Coordinator at 541-880-2381 or ruizm@klamathcc.edu



KCC Students Ride Free

Show your KCC student ID and BTS will do the driving for you.

Do you need a lift to campus? Just flash a valid KCC student ID card and Basin Transit Service (BTS) will bring you in from anywhere on its routes! Buses stop hourly on campus at :55 on the hour from 6:55 AM to 6:55 PM.

Student Resources

STEP

STEP (SNAP Training and Employment Program) services are available for SNAP recipients of all ages who need help in seeking, or continuing with, job or career education. Services available:

- Career coaching
- Academic skill building
- Career Pathways training
- Internships / work experience
- KCC tuition, books, and fee support

Contact the STEP Coordinator at 541-880-2343 or scobee@klamathcc.edu

Technology Help Desk

Need help with printing, installing Microsoft Office 365, or other technology?

Visit the Technology Help Desk in the Health Sciences Building (Bldg 6) room 6134.

Phone: 541-880-2226

Email: is.helpdesk@klamathcc.edu

Hours:

Monday - Friday: 7 AM-8 PM

Saturday: 10 AM-2 PM

Testing Center

The Testing Center provides testing/proctoring services for a variety of assessments to KCC students, the extended community, other partnering colleges, and local/state licensing agencies. For more information, call 541-880-2334. The Testing Center is located in Building 3.

TRiO Student Support Services

TRiO Student Support Services is a free program funded by a federal grant. TRiO accepts up to 140 students and follows that cohort from program entry to graduation and/or transfer. Students receive extra academic advising, transfer assistance, tutoring, career and learning style assessment, free visits to universities, and several cultural events each year.

TRiO is located in Founders Hall. For more information, or to request an application, call 541-880-2289 or visit www.klamathcc.edu/trio-sss

Tutoring Services

IN-PERSON TUTORING

Tutors are available to help students in a variety of subjects, including math, chemistry, physics, biology, writing, computers, English, Spanish, and more! This service is free to current students in the LRC's Tutoring Center, upstairs in Founders Hall.

ANSWERLAND AND ETUTORING.ORG

Students have free 24/7 access to reference help and online tutoring through the college's online learning platform, Canvas.

PICTURE YOUR FUTURE AT KLAMATH COMMUNITY COLLEGE

In two years or less you could be standing on the KCC commencement stage with a degree or certificate.

KCC has classes in a variety of formats and times to fit your schedule.

Where will you be two years from now?

Enroll today!



Get Involved and Stay Connected!

Office of Student Life

Student Life promotes the development and success of our students by providing opportunities for meaningful, diverse connections; personal and professional leadership and growth; and community engagement and service.

Get connected! Stop by the Student Life Center to find ways to enhance your college experience at KCC and develop your skills outside the classroom.

For more information or to get involved, contact Student Life at 541-880-2355 or via email at studentlife@klamathcc.edu.

Experience Beyond the Classroom

COMMUNITY SERVICE & VOLUNTEERISM

The Volunteer Badgers program offers opportunities for students and employees to give back to the Klamath Falls community. From adopting a section of the OC&E Trail to volunteering at local events, Volunteer Badgers host one service day a month and are working to expand the number and type of projects available.

Each term, the Office of Student Life hosts a volunteer fair to facilitate meaningful service and community engagement in partnership with community-based organizations. Check out our calendar for event dates/times: www.klamathcc.edu/events.

DIVERSITY

The Office of Student Life celebrates the diversity of experiences and backgrounds found within the KCC community. To foster connection and growth among students and staff, Student Life hosts a wide variety of diversity-based activities and events including Dia de los Muertos, Mardi Gras, and more.

INTRAMURALS & SPORTS

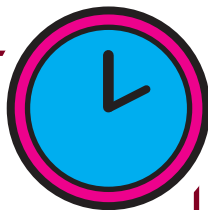
Being a student is more than sitting in a classroom. Student Life aims to get students moving and practice wellness in their everyday lives. Students are invited to use the Wellness Center in Building 4 after a short orientation.

LEADERSHIP

The Office of Student Life hosts workshops to encourage student learning beyond the classroom. These workshops are free and open to students at any level in their leadership journey. Potential topics include effective communication, resumé review, informed decision making, emotional intelligence, and more.

KCC Standard Hours:

Campus offices are open Monday through Friday between the hours of 8 AM and 5 PM, except on national holidays.



Associated Students of
KLAMATH
Community College

Get Involved

ASSOCIATED STUDENTS OF KLAMATH COMMUNITY COLLEGE (ASKCC)

ASKCC advocates for the student body at local, state, and federal levels, creating opportunities for community engagement and providing access to resources based on individual and collective student needs.

Advocacy • Service • Knowledge • Community • Connection

ASKCC OFFICERS

ASKCC officers are selected each year during the spring term and work to advocate for the student body each academic year (summer term through spring). Officers are available for support or a listening ear during their office hours each week in the Office of Student Life located in Building 4.

If you are interested in applying for an officer position, stop by the Office of Student Life or email studentlife@klamathcc.edu.

Student Clubs and Organizations

WHY SHOULD YOU GET INVOLVED?

Have you ever been passionate to represent a culture or hobby? Joining a club would be a perfect fit! At KCC, student clubs and organizations are the perfect environment to take ownership of your college experience with a fun, out of the classroom community. Students who are involved in clubs will tell you that they provide leadership opportunities, a greater sense of belonging, and a positive outlet for the stress that college can bring.

CAMPUS CLUBS CURRENTLY RECOGNIZED AT KCC:

- Alpha Gamma Nu Nursing Society.
- Criminal Justice Life Club. Advisor: Jim Gravely.
- Indigenous People Club. Advisor: Jo Cochran.
- KCC Gaming Club. Advisor: Kurt Liedtke.
- Latino Club. Advisor: Oscar Herrera.
- Phi Theta Kappa Honors Society (PTK). Advisor: Jason Shrontz.
- Rainbow Club. Advisor: Michael West.
- Science Club. Advisor: Eleazar Gutierrez.
- Technology & Engineering Club. Advisor: Pete Brandsness.

DON'T SEE A CLUB YOU WANT TO JOIN? CREATE A NEW CLUB!

It's simple to start a new club on campus! If you have an idea for a club that you would like to see at KCC, contact the Director of Student Life, at studentlife@klamathcc.edu or 541-880-2321.

Degrees and Certificates

Accounting

- Associate of Applied Science
 - Accounting AAS
- One Year Certificate
 - Accounting Certificate
- Less-Than-One-Year Certificate
 - Accounting - Bookkeeping Career Pathway Certificate

Agriculture Science

- Associate of Applied Science
 - Agriculture Science AAS
- Less-Than-One-Year Certificate
 - Farm and Ranch Manager Career Pathway Certificate

Associate of Arts Transfer (AAT)

- AAT - English Literature

Associate of Arts, Oregon Transfer (AAOT)

- AAOT
- AAOT - Elementary Education
- AAOT - Exercise Science Emphasis
- AAOT - Fire Ecology Emphasis
- AAOT - Forest Ecology Emphasis
- AAOT - Math Emphasis

Associate of General Studies (AGS)

- AGS
- AGS - Psychology

Associate of Science (AS)

- Associate of Science

Associate of Science Transfer (AST)

- AST - Biology
- AST - Business

Automotive Technology

- Associate of Applied Science
 - Automotive Technology AAS
- Less-Than-One-Year Certificate
 - Automotive Technician Electrical/Electronic Specialist Career Pathway Certificate

Aviation

- Associate of Applied Science
 - Aviation Airplane AAS
 - Aviation Helicopter AAS

Business Administration

- Associate of Applied Science
 - Business Administration AAS (Emphasis in Business Management or Marketing)
- One Year Certificate
 - Business Administration Business Management Certificate
 - Business Administration Marketing and Sales Certificate
- Less-Than-One-Year Certificate
 - Business Administration First-Line Supervisor Fundamentals Career Pathway Certificate

Business Technology

- Associate of Applied Science
 - Business Technology Administrative Office Professional AAS
- One Year Certificate
 - Business Technology Administrative Office Professional Certificate
- Less-Than-One-Year Certificate
 - Business Technology Administrative Office Professional Office Support Specialist Career Pathway Certificate

Computer Engineering Technology

- Associate of Applied Science
 - Computer Engineering Technology AAS
- One Year Certificate
 - Computer Systems Fundamentals Certificate
- Less-Than-One-Year Certificate
 - Computer Systems Fundamentals Career Pathway Certificate

Cosmetology

- Associate of Applied Science
 - Cosmetology AAS
- One Year Certificate
 - Cosmetology - Barbering Certificate
 - Cosmetology - Esthetics and Nail Technology Certificate
 - Cosmetology - Hair Design Certificate
- Less-Than-One-Year Certificate
 - Cosmetology - Esthetics Career Pathway Certificate
 - Cosmetology - Nail Technology Career Pathway Certificate

Criminal Justice

- Associate of Applied Science
 - Criminal Justice AAS
- One Year Certificate
 - Addiction Studies Certificate
 - Criminal Justice Certificate
- Less-Than-One-Year Certificate
 - Addiction Studies Career Pathway Certificate

Cybersecurity and Networking

- Associate of Applied Science
 - Cybersecurity and Networking AAS
- One Year Certificate
 - Secure Network Technician Certificate
- Less-Than-One-Year Certificate
 - Computer Support Technician I Career Pathway Certificate

Diesel Technology

- Associate of Applied Science
 - Diesel Technology AAS
- Less-Than-One-Year Certificate
 - Diesel Technician Electrical/Electronic Specialist Career Pathway Certificate
 - Professional Truck Driver Career Pathway Certificate

Digital Media Design

- Associate of Applied Science
 - Digital Media Design AAS
- One Year Certificate
 - Digital Media Design Multimedia Design Certificate
 - Digital Media Design Web Design Certificate
- Less-Than-One-Year Certificate
 - Digital Media Design Multimedia Design Career Pathway Certificate
 - Digital Media Design Web Design Career Pathway Certificate

Education

- Associate of Applied Science
 - Early Childhood Educator Emphasis AAS
 - Education - Paraeducator Emphasis AAS
- One Year Certificate
 - Early Childhood Educator Certificate
 - Education - Paraeducator Certificate
- Less-Than-One-Year Certificate
 - Early Childhood Education Career Pathway Certificate
 - Early Childhood Education Career Pathway Certificate (Spanish)
 - Education - Paraeducator Career Pathway Certificate

Emergency Response and Operations

- Associate of Applied Science
 - Emergency Response and Operations AAS (Emphasis in Criminal Justice, Emergency Medical Technician, Structural Fire Science, and Wildland Fire Science)
- One Year Certificate
 - Criminal Justice Certificate - ERO
 - Emergency Medical Technician Certificate
 - Structural Fire Science Certificate
 - Wildland Fire Science Certificate
- Less-Than-One-Year Certificate
 - Criminal Justice Career Pathway Certificate
 - Emergency Medical Technician Career Pathway Certificate
 - Structural Fire Science Career Pathway Certificate
 - Wildland Fire Science Career Pathway Certificate

Health Services

- Associate of Applied Science
 - Health Information Management AAS
- One Year Certificate
 - Certified Coding Specialist Certificate
- Less-Than-One-Year Certificate
 - Electronic Health Record Career Pathway Certificate
 - Medical Administrative Assistant Career Pathway Certificate

Laboratory Technician

- Associate of Applied Science
 - Laboratory Technician AAS
- One Year Certificate
 - Laboratory Technician Certificate
- Less-Than-One-Year Certificate
 - Biological and Biotechnology Laboratory Technician Career Pathway Certificate
 - Medical and Clinical Laboratory Technician Career Pathway Certificate

Manufacturing Engineering Technology

- Associate of Applied Science
 - Manufacturing Engineering Technology AAS
- One Year Certificate
 - Manufacturing Engineering Technologist Certificate
- Less-Than-One-Year Certificate
 - Computer Aided Design Career Pathway Certificate
 - Mechanical Design Solid Modeling Career Pathway Certificate

Nursing

- Associate of Applied Science
 - Nursing AAS
- One Year Certificate
 - Practical Nurse Certificate

Welding

- One Year Certificate
 - Welding Certificate
- Less-Than-One-Year Certificate
 - Welding - Gas Metal Arc/Wire Feed Welding Career Pathway Certificate
 - Welding - Shield Metal Arc/Stick Welding Career Pathway Certificate
 - Welding - Tig/Aluminum Stainless Steel Flat Welding Career Pathway Certificate
 - Welding - Shield Metal Arc/Stick Welding of Pipe Career Pathway Certificate



The Campus Safety staff is committed to promoting a safe and secure campus and protecting our college community. All members of the college can assist in making Klamath Community College a safe environment. We need your eyes and ears open to help keep our campus safe. Please report any suspicious activity to Campus Safety.

CONTACT INFORMATION

Visit Building 3, Room 301

Emergency call 911.

Campus Safety can be contacted at 541-880-2314.

You can contact Campus Safety via email at safety@klamathcc.edu.

CRIME PREVENTION TIPS

- Always lock your car.
- Park in a lighted area at night.
- Try to travel in groups.
- Be aware of blue-light emergency phones.
- Walk with your keys in hand.
- Look in your backseat before entering your car.
- When possible, walk in a group.
- Carry your purse or backpack close to your body.
- Never accept a ride from a stranger.
- Let friends and/or family know of your schedule.
- In case of an emergency, CALL 911!

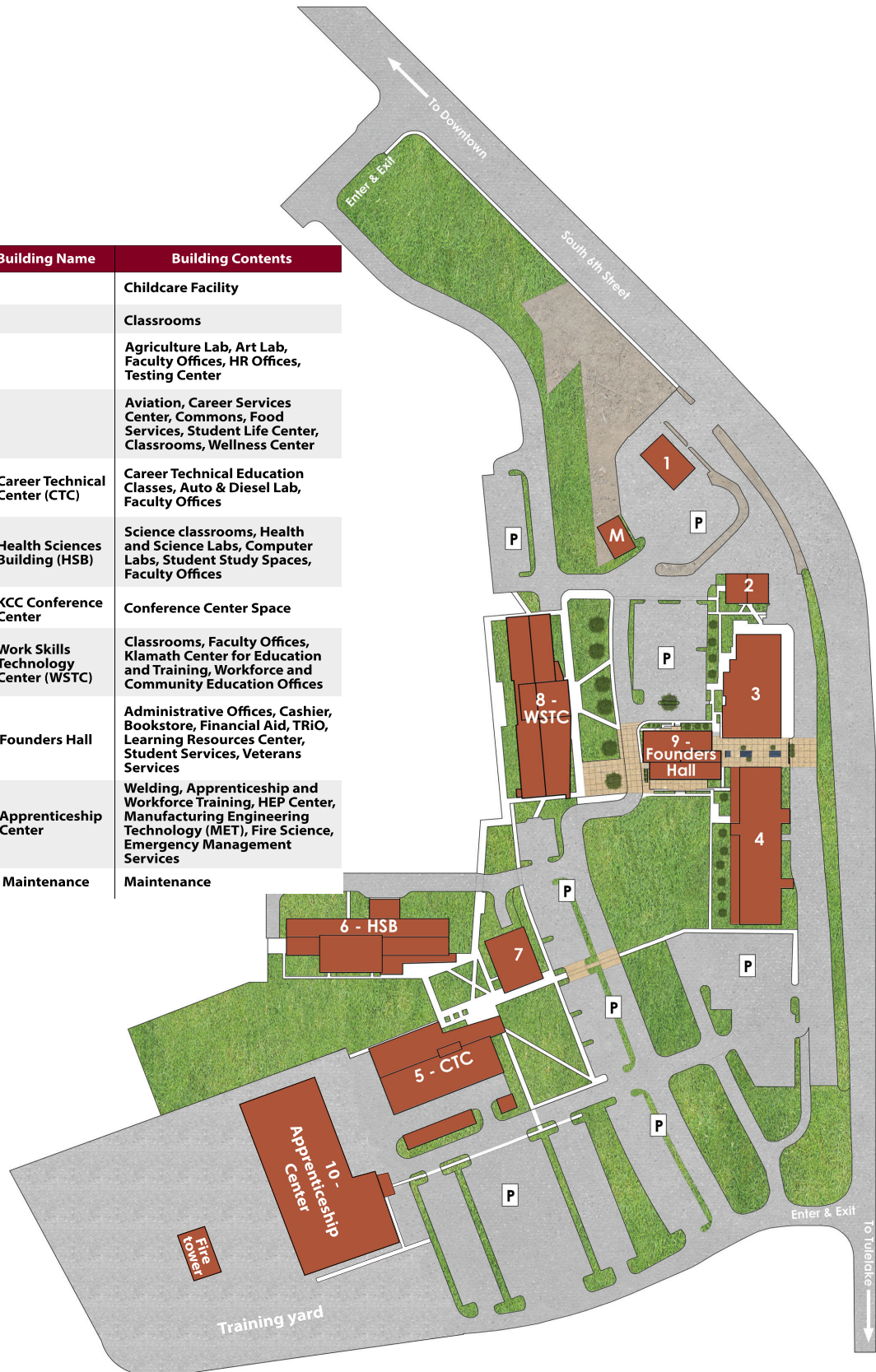
Klamath Community College Non-Discrimination and Equal Opportunity Policy

Klamath Community College is an equal opportunity educator and employer. It shall be the policy of the Klamath Community College District to affirm the rights of all individuals to equal education, activities, facilities, and employment without regard to age, sex, disability, national origin, race, color, marital status, religion, or sexual orientation in accordance with federal and state laws. Klamath Community College complies with Titles VI and VII of the Civil Rights Act of 1964, Title IX of the Educational Amendments of 1972, and Section 504 of the Rehabilitation Act of 1973, and Title II of the Americans with Disabilities Act of 1990, and any amendments thereto.

Inquiries or grievances concerning the application of these laws and regulations to the College may be directed to Klamath Community College's Executive Director of Human Resources and General Counsel at 7390 South 6th St., Klamath Falls, OR 97603 or at 541-882-3521; or to the Office of Civil Rights, U.S. Department of Education, 915 Second Ave. Room 3310, Seattle, WA 98174-1099

Campus Map

Building #	Building Name	Building Contents
Building 1		Childcare Facility
Building 2		Classrooms
Building 3		Agriculture Lab, Art Lab, Faculty Offices, HR Offices, Testing Center
Building 4		Aviation, Career Services Center, Commons, Food Services, Student Life Center, Classrooms, Wellness Center
Building 5	Career Technical Center (CTC)	Career Technical Education Classes, Auto & Diesel Lab, Faculty Offices
Building 6	Health Sciences Building (HSB)	Science classrooms, Health and Science Labs, Computer Labs, Student Study Spaces, Faculty Offices
Building 7	KCC Conference Center	Conference Center Space
Building 8	Work Skills Technology Center (WSTC)	Classrooms, Faculty Offices, Klamath Center for Education and Training, Workforce and Community Education Offices
Building 9	Founders Hall	Administrative Offices, Cashier, Bookstore, Financial Aid, TRiO, Learning Resources Center, Student Services, Veterans Services
Building 10	Apprenticeship Center	Welding, Apprenticeship and Workforce Training, HEP Center, Manufacturing Engineering Technology (MET), Fire Science, Emergency Management Services
Building M	Maintenance	Maintenance



Course Updates



Common Course Numbering

In February 2023 the Oregon Higher Education Coordinating Commission (HECC) approved a set of 10 commonly numbered courses. KCC currently provides nine of these courses. These courses are standardized in the course title, number, learning outcomes, descriptions, subject code, and credits. The courses are intended to help students keep credit when they transfer from a community college to a four-year university. This saves students time and money by not having to re-take courses. The change benefits students who transfer between any public institution in Oregon.

What does that mean for you? It means that when you see a course code ending in the letter 'Z' you are looking at a common course, so it will transfer with no loss of credit between any of Oregon's public universities or community colleges. Be on the lookout for these new courses in the following pages and online at classes.klamathcc.edu.

KCC Common Courses:

- COM 111Z Public Speaking
- COM 218Z Interpersonal Communication
- MTH 105Z Math in Society
- MTH 111Z Precalculus I: Functions
- MTH 112Z Precalculus II: Trigonometry
- STA 243Z Elementary Statistics I
- WRI 121Z Composition I
- WRI 122Z Composition II
- WRI 227Z Technical Writing

Learn more about Common Course Numbering (HECC website)



Course codes ending with 'M'

Have you ever looked at the course schedule and wondered why some course codes end with 'M'? You are not alone. Courses that end with 'M' are different from other courses. 'M' classes are always worth five (5) credits, and they cover the same material as other courses with the same title and code. This extra credit hour means more coursework for the same material. There are no extra fees for 'M' classes, but they do cost more in tuition since tuition is charged per credit.

KCC's 'M' courses are intended for our students in the military, but any current student can take them. However, before signing up for an 'M' course, make sure to talk to your advisors since the credit difference may affect your financial aid or degree plan.

Addiction Studies

ADS 102 Drug Use & Addiction

An examination of commonly abused drugs with emphasis on the physical, psychological, and behavioral consequences of these drugs. Includes drug chemistry, physiological effects of drug use upon the body, and specific treatment formats and techniques. Recommended: WRI 121 placement.

ADS 150 Basic Counseling & Addiction

Introduction to the theory and practice of addictions counseling. Students will examine various counseling theories and begin developing their own approach to addictions counseling. Students will participate in guided practice to facilitate skill development. Recommended: WRI 121 placement.

ADS 156 Ethical & Professional Issues

In-depth examination of counseling ethics with particular focus and attention paid to the role of the professional addictions counselor. Students will become familiar with the ethical guidelines of the ACCBO (Addiction Counselor Certification Board of Oregon) and the American Counseling Association. Recommended: WRI 121 placement.

ADS 158 Introduction to Addiction Medication Assessment and Placement

Introduction to the American Society of Addition Medication (ASAM) six dimensions of assessment and placement criteria for persons who are misusing or abusing substances. Students will gain an understanding of the relationships between assessment and intervention planning for those who are misusing or abusing substances. Students will also learn about the correlation between substance abuse and mental health issues.

ADS 280 Coop Wk Exp: Addictions

On-the-job, paid or volunteer, experiences which allow for the application and development of knowledge, skills, and attitudes learned through the on-campus program. Instructor permission is required, and the student must locate a job site for the course.

Automotive Technology

AMT 293 Lube Technician 2

Students will perform career readiness education through practice of live work-based skills. This course will focus on performance, procedure, applied skills and analysis of a lube technician 2. Prerequisite: AMT 292 with a grade of "C" or better.

Animal Science

ANS 121 Intro to Animal Science

Principles of breeding, physiology, nutrition, and management as they apply to modern livestock and poultry production. Recommended: BIO 101.

Agriculture

ARE 211 Management in Agriculture

Economic and business principles applied to the management of agribusiness firms including: farms and ranches; goal setting and management information; planning and decision-making tools; acquiring, organizing, and managing land, labor and capital resources.

Art

ART 131 Intro to Drawing

A studio experience exploring basic drawing techniques, materials, and concepts while addressing historical and contemporary issues. A conceptual framework for critical analysis is presented along with basic art theory. College-level reading comprehension is recommended. You will be expected to purchase materials for this course based on a list provided by the instructor. Material costs will be approximately \$100 or less. May not be taken concurrently with ART 213.

ART 213 Mod Art Hist - Art Since 1945

World War II ended the supremacy of Europe in the visual art world and focused attention on America. Course examines and analyzes art since 1945 to explore the ideas behind it, reveal our culture and values, and to gain a greater understanding and appreciation of contemporary art. Recommended: WRI 121 placement.

ART 281 Painting

A studio experience with supporting slides, lectures, and films. Explores different ways of seeing and painting to become more visually literate. Examines basic painting techniques and materials. Presents the conceptual framework for critical analysis, along with basic theories of art in the historical context. You will be expected to purchase materials for this course based on a list provided by the instructor. Material costs will be approximately \$200.

Aviation

AVS 100 Intro to Aviation

This course examines aviation from early flight to future potentials. Introduces career opportunities in all fields of aviation and outlines career advancement possibilities. Provides general overview of pilot certificates and ratings and training aircraft used.

AVS 105 Aviation Fundamentals

Covers the basic fundamentals of aircraft aerodynamics, aircraft performance, and aviation meteorology with emphasis on Air Traffic Control (ATC) procedures, pilot communication, and the National Airspace System (NAS).

AVS 120 Aircraft Systems & Structures I: Airframe

This course is designed to give students the background in aircraft systems and structures, with an emphasis on airframe components that will enable them to progress into more advanced aircraft. Provides understanding of the safe and efficient operation of aircraft systems.

AVS 251 Aviation Law & Regulations

This course explores the applicable federal aviation regulations through case law and current events. The FAA's role in the development and regulation of the industry is examined. Covers how to reference, interpret, and explain aviation law and regulations.

AVS 254 Aviation Safety

This course offers a detailed introduction into aspects of aviation safety intended to promote flight safety in the general aviation and training environment. Topics will include risk management, pilot psychology, human factors, accident trends, and analysis of accident reports.

Looking for course dates, times, or instructors? Check classes.klamathcc.edu!

Biology

BIO 101 Biology I

A laboratory science course designed for non-biology majors. The first term of a three-term sequence. Includes introduction to science, biochemistry, metabolism, the cell, molecular biology and reproduction. Recommended: Completion of CAS 133. Prerequisites: MTH 070 or MTH 095 or MTH 111 or placement into MTH 095 or MTH 111 and WRI 095 or WRI 121 or placement into WRI 121. Corequisite: BIO 101L.

BIO 101L Bio I Lab

Laboratory activities relating to BIO 101. Corequisite: BIO 101.

BIO 103 Biology III

A laboratory science course designed for non-biology majors. Presents the evolutionary relationships among the five kingdoms and their major phyla. The last half of this term covers human systems. Corequisite: BIO 103L.

BIO 103L Bio III Lab

Laboratory activities relating to BIO 103. Corequisite: BIO 103.

BIO 112 Integrated Chemistry and Cell Biology for Health Occupations

Introduces basic concepts of matter, atoms, compounds, intermolecular forces, solutions, pH, biomolecules, cell chemistry, cell structure and function, cell reproduction, and genetics. Concepts covered are applied to health-related problems. Recommended: MTH 070 or MTH 095 or MTH 111 or placement into MTH 070. Corequisite: BIO 112L.

BIO 112L Integrated Chemistry and Cell Biology for Health Occupations Lab

Laboratory activities relating to BIO 112. Corequisite: BIO 112.

BIO 211 Prin of Biology 1 (Preprofessional)

First part of a three-term sequence for students majoring in biology and the sciences, including pre-medical, pre-dental, pre-veterinarian, chiropractic, pharmacy, and related fields. Includes introduction to science, biochemistry, metabolism, the cell, molecular biology, and genetics. Prerequisites: MTH 095 or MTH 111 or placement into MTH 111 and WRI 095 or WRI 121 or placement into WRI 121. Corequisite: BIO 211L.

BIO 211L Prin of Bio 1 Lab

Laboratory activities relating to BIO 211. Corequisite: BIO 211.

BIO 227 Intro to Forensic Science

Introductory forensic science course exploring methodologies and procedures utilized by crime scene investigators and individual forensic laboratories. Lecture will focus on the crime scene with emphasis on crime scene processing, types of physical evidence, and its proper documentation and collection. Prerequisite: MTH 020 or MTH 070 or MTH 095 or MTH 111 or placement into MTH 070 and WRI 090 or WRI 095 or WRI 121 or placement into WRI 095. Corequisite: BIO 227L.

BIO 227L Introduction to Forensic Science Lab

Lab activities relating to BIO 227. Corequisite: BIO 227.

BIO 231 Anatomy & Physiology I

First term of a three-term sequence covering chemistry, cells, tissues, and the skin, skeletal, and muscular systems. Laboratory experiences will be used to elaborate on concepts presented in lecture. Prerequisites: BIO 112 and BIO 112L. Corequisite: BIO 231L.

BIO 231L Anat & Phys I Lab

Laboratory activities relating to BIO 231. Corequisite: BIO 231.

BIO 233 Anatomy & Physiology III

Third term of a three-term sequence. Courses may not be taken out of sequence. Covers digestive, respiratory, urinary, and reproductive systems, fluid and electrolyte balance, metabolism, embryology, and genetics. Laboratory experiences will be used to elaborate on concepts presented in lecture. Prerequisite: BIO 232. Corequisite: BIO 233L.

BIO 233L Anat & Phys III Lab

Laboratory activities relating to BIO 233. Corequisite: BIO 233.

Business

BUS 101 Intro to Business

Survey course exploring historical, social, political, economic, and legal environments of business. Interrelationships of the functional areas of management, finance, marketing, accounting, and international business are introduced. The class will stress fundamental concepts, terminology, ethics, and career opportunities.

BUS 111 Intro to Accounting

Presents double-entry accounting as related to service businesses. Provides an understanding of the accounting cycle, debits and credits, and financial statements for these businesses. Also introduces journalizing and posting to the general ledger.

BUS 177 Payroll Accounting

Provides the fundamental skills needed to prepare a business payroll. Introduces payroll and personnel recordkeeping, calculation of pay, payroll journalizing, regulations covering Social Security, withholding, and unemployment. Prerequisites: BUS 111 or BUS 211 with a grade of "C" or better and CAS 170 with a grade of "C" or better.

BUS 178 Customer Service Fundamentals

This course focuses on the skills necessary to deliver exceptional customer service in a retail or service business or organization. Topics will include developing communication skills and an attitude of service, enhancing customer relationships, dealing with difficult customers, active listening and problem solving to address customer needs, and strategies to remain self-motivated in the service industry.

BUS 206 Management Fundamentals

A study of the basic management and organizational principles within business entities. Introduces the concepts of planning, organizing, leading, control, implementation of change, ethical behavior, and corporate culture. Provides opportunities for students to apply concepts to actual workplace scenarios and evaluate impact on global business activities.

BUS 211 Principles of Accounting I

Introduces financial accounting theory, including the accounting cycle, analysis and recording of transactions, and reporting financial information in accordance with generally accepted accounting principles. Prerequisite: BUS 111 with a grade of "C" or better.

BUS 218 Personal Finance

Studies the role of the consumer in the economy and addresses problems of financing individual and family needs, including budgeting, banking relationships, charge accounts, installment buying, insurance, wills, real estate investing, and personal taxes. Recommended: Placement into MTH 060 or MTH 070.

Academic Fall Courses A - Z

BUS 223 Principles of Marketing

Study and analysis of the elements of marketing and marketing strategy, stressing product development, policies, pricing strategies, promotion, distribution, international markets, and consumer behavior. Emphasis on the elements of the marketing mix and target markets for consumer and industrial markets.

BUS 226 Business Law I

This course provides an introduction to the legal environment of business. Focus topics include regulation, court jurisdiction, forms of business organization, the obligations arising from business relationships and transactions, and the liabilities arising from business practices. Prerequisite: WRI 121.

BUS 233 Social Media Marketing

This course explores principles and technologies related to Internet marketing as part of an organization's overall marketing strategy. Common social media tools such as Facebook, X, YouTube, and others will be utilized as resources to connect with customers and improve business performance.

BUS 250 Small Business Management

Practical analysis of principles of small business management and owner operated businesses are covered. Explores management methods, financial support, marketing management, common administration and control, analysis of trends, and professional practices. Students will be exposed to the critical elements of a business plan. Prerequisites: BUS 111 or BUS 211 and CAS 133 and CAS 133L.

BUS 280 Coop Work` Exp: Business

On-the-job, paid or volunteer, experiences which allow for the application and development of knowledge, skills, and attitudes learned through the on-campus program so that the student can learn various functional aspects of the industry. Cooperative work experience is offered for variable credit based on the student's objectives. Instructor permission is required prior to registering and the student must locate a job site for the course. Recommended: Completion of TEX 280 or co-enrollment during same term.

BUS 285 Human Relations in Organizations

This course covers human interactions within organizations, with a particular focus on communication and small group dynamics. Human relations techniques that build better employer/employee relationships are explored, and interpersonal relations both on the job and in everyday life are addressed.

Computer Applications

CAS 121 Beginning Keyboarding

Students will learn to key alphabetic portion of the computer keyboard by touch, develop or refine basic keyboarding techniques, and increase speed and accuracy.

CAS 122 Keyboarding for Speed & Accuracy

Students will refine keyboarding technique, increase speed, and improve accuracy through corrective practice. Recommended: Ability to touch type (defined as using the correct key reaches and not looking at keys while typing) at a minimum rate of 20 wpm.

CAS 133 Intro to Computing Skills

Provides hands-on experience with Microsoft Office software fundamentals, including Word, PowerPoint, and Excel. Includes concepts of computer operations and literacy as well as insight into the broad impact of computers on today's society. Students should have a basic working knowledge of general computer use prior to enrollment. Recommended: WRI 095 and keyboarding by touch. Corequisite: CAS 133L.

CAS 133L Intro to Computing Skills Lab

Laboratory activities relating to CAS 133. Corequisite: CAS 133.

CAS 170 Spreadsheets

This in-depth, hands-on course will present beginning and intermediate spreadsheet concepts. Students will use Excel efficiently to design and create accurate professional worksheets for use in business. Recommended: CAS 133 and MTH 020 or MTH 070 or MTH 095 or MTH 111 or placement into MTH 070.

College Survival and Success

CGS 100 College Survival & Success

The purpose of this course is to help the student become a more effective learner. This course will cover college terms and information, class choice, degree requirements, etc. Helps new or returning students make personal and social adjustments for college success.

CGS 112 Career Exploration & Planning

This course will help students explore career options utilizing employment and community resources plus online job search resources. Interviewing skills will be stressed with mock interviews.

Chemistry

CHE 104 General Chemistry I

Includes general principles of chemistry, including atomic structure, mole concept, chemical reactions stoichiometry, and gas laws. Prerequisites: MTH 095 or MTH 111 or placement into MTH 111 and WRI 121. Corequisite: CHE 104L

CHE 104L Gen Chem I Lab

Laboratory activities relating to CHE 104. Corequisite: CHE 104.

CHE 221 General Chemistry I (Preprofessional)

Includes fundamentals of chemistry, atomic structure, chemical bonding, nomenclature, physical states of matter, properties of gases, and chemical equations. Recommended for chemistry and other laboratory science majors, preprofessional major in engineering, medicine, and dentistry. Prerequisites: MTH 095 or MTH 111 or placement into MTH 095 or MTH 111. Corequisite: CHE 221L.

CHE 221L Gen Chem I Lab

Laboratory activities relating to CHE 221. Corequisite: CHE 221.

Computer Information Systems

CIS 111 Digital Game Development I

Learn how to make high quality 2D and 3D video games using Unity. Students will learn game development design principles and practices. Learn how to create, acquire, modify and integrate assets such as sounds, music and 3D models all while learning how to build interactive 3D worlds. Corequisite: CIS 111L.

Academic Fall Courses A - Z

CIS 111L Digital Game Development I Lab

Laboratory activities relating to CIS 111. Corequisite: CIS 111.

CIS 116 C++ Programming I

Computer concepts and problem solving methods using C++ programming language. Topics include: algorithms, simple data types, conditional and iterative structures, function definition, structured programming and documentation. Prerequisite: CIS 142 and CIS 142L with a grade of "C" or better and MTH 095 or MTH 111 or placement into MTH 111. Corequisite: CIS 116L.

CIS 116L C++ Programming I Lab

Laboratory activities relating to CIS 116. Corequisite: CIS 116.

CIS 135 Mobile App Development

This course delves into the fundamentals of mobile application development, focusing on beginner programming concepts. Students will learn to develop basic applications suitable for mobile devices, exploring the various phases of application development, associated terminology, and the principles of application design and coding. Emphasis will be placed on developing programming skills in application development. Corequisite: CIS 135L.

CIS 135L Mobile App Development Lab

Laboratory activities relating to CIS 135. Corequisite: CIS 135.

CIS 145 Hardware Installation Support

The course covers the fundamentals of computer hardware. Workplace safety and hardware handling procedures will be covered. Students will learn to identify, test, and install motherboards, memory components, power supplies, and peripheral devices. Corequisite: CIS 145L.

CIS 145L Hardware Installation Support Lab

Laboratory activities relating to CIS 145. Corequisite: CIS 145.

CIS 151 Network I

This course introduces the basic concepts and characteristics of network systems. Students will learn the common network protocols and standards, the fundamentals of IP addressing, how to connect network hardware, and the role of network software. Coursework will include designing and building a small office/home office (SOHO) system. Corequisite: CIS 151L.

CIS 151L Network I Lab

Laboratory activities relating to CIS 151. Corequisite: CIS 151.

CIS 153 Scaling Networks

Students will work with routers and switches using OSPF, EIGRP, and STP protocols in both IPv4 and IPv6 networks and learn to resolve common VLAN routing issues in both IPv4 and IPv6 networks. Configuring WAN technologies and network services required by converged applications in a complex network will be covered in this course. This is the third course in a 4-course series. Prerequisite: CIS 152 with a grade of "C" or better. Corequisite: CIS 153L.

CIS 153L Scaling Networks Lab

Laboratory activities relating to CIS 153. Corequisite: CIS 153.

CIS 162 Digital Logic Design

Introduction to combinational logic. Includes introduction to number systems, Boolean algebra, logic gates, muxes, decoders, adders, subtracters, and logic design using hardware description language. Laboratory integral to the class. Prerequisites: MTH 095 or MTH 111 or placement into MTH 111. Corequisite: CIS 162L.

CIS 162L Digital Logic Design Lab

Laboratory activities relating to CIS 162. Corequisite: CIS 162.

CIS 206 Intro to Information Technology

This course introduces the key components found in modern business information systems, including both the major hardware components of today's network and primary categories of software applications used to support knowledge workers. Data resource management concepts are developed to provide the student with a high level picture of how the elements of an information system work together to solve problems and support business opportunities. Business ethics relating to the use of information systems is explored for local and global firms. Corequisite: CIS 206L.

CIS 206L Intro to Information Technology Lab

Laboratory activities relating to CIS 206. Corequisite: CIS 206.

CIS 243 E-Commerce

This foundational course in electronic commerce covers topics such as online selling and marketing, Business-to-Business (B2B) and Business-to-Consumer (B2C) activities, applying social networks, legal and tax issues, web servers, security, and third-party payment systems.

CIS 280 Coop Wk Exp: Computer Technology Engineer

On-the-job, paid or volunteer, experiences which allow for the application and development of knowledge, skills, and attitudes learned through the on-campus program so that the student can learn all aspects of the industry. Cooperative work experience is offered for variable credit based on the student's objectives. Instructor permission is required and the student must locate a job site for the course. Prerequisites: CIS 146 and CIS 152 with a grade of "C" or better.

Criminal Justice

CJA 101 Intro to Criminal Justice & Human Services Careers

This course is designed to help students become aware of career and education options in human services and criminal justice. Students attending this course will become familiar with the educational requirements, lifestyle considerations, application processes, training, certification requirements, and career opportunities in the fields of criminal justice and human services. Students will solidify their academic plan and prepare a personal career plan based on their goals. There are no prerequisites for this course. Students are strongly encouraged to take this course concurrently or immediately after CGS 100.

CJA 105 Cultural Diversity in Criminal Justice Professions

Provides introduction and familiarization with communication styles, customs, language and behavior patterns of various cultures, ethnic groups and marginalized populations as employed by and encountered by criminal justice professionals. Students participating in this course will study the history and impact of prejudice, discrimination, and racism within the criminal justice system. Students will learn the importance of relating to all segments of the communities they serve in a fair and unbiased manner. The knowledge of various populations will enhance the quality of criminal justice services, individual officer safety, and increase the understanding and empathy in the process of improving criminal justice services-citizen contacts.

Academic Fall Courses A - Z

CJA 210 Arrest, Search & Seizure

Presents constitutional and Oregon statutory requirements in the areas of arrest, search, and seizure. Includes document preparation, service, and courtroom presentation. Recommended: CJA 111, CJA 112, and CJA 113. Prerequisites: WRI 121 with a grade of "C" or better.

CJA 211 Civil Liability & Ethics in Criminal Justice

Explores conduct that gives rise to issues of civil liberty. This course will examine both state and federal law and the role of the courts at the state and federal level. Recommended: CJA 111, CJA 112, and CJA 113. Prerequisites: WRI 121 with a grade of "C" or better.

CJA 263 Intro to Criminal Justice Case Management

Introduces the process of casework and case management in a criminal justice setting. Develops both a theoretical and practical base of knowledge to allow the student to develop counseling and/or assessment techniques. Students participating in this course will study some of the more common techniques used in correctional casework settings including that focuses on therapy, social support, cognitive skills, behavior modification, substance abuse recovery, enhanced practices in community supervision (EPICS), motivational interviewing (MI), and other techniques. Students will achieve sensitivity for correctional clients, including those with ADHD, mental health, geriatric, sex offenders, and other needs. Students participating in the course will demonstrate skills in simulated counseling and casework situations; including the preparation of counseling progress notes, reports and clinical assessments. Recommended: CJA 111, CJA 112, and CJA 113. Prerequisites: WRI 121 with a grade of "C" or better.

CJA 280 Coop Wk Exp: Criminal Justice

On-the-job, paid or volunteer, experiences which allow for the application and development of knowledge, skills, and attitudes learned through the on-campus program so that the student can learn all aspects of the industry. Instructor permission is required and the student must locate a job site for the course.

Communications

COM 111M Public Speaking

COM 111M emphasizes developing communication skills by examining and demonstrating how self-awareness, audience, content, and occasion influence the creation and delivery of speeches and presentations. Prerequisite: WRI 121.

COM 111Z Public Speaking

COM 111Z emphasizes developing communication skills by examining and demonstrating how self-awareness, audience, content, and occasion influence the creation and delivery of speeches and presentations. Prerequisite: WRI 121.

Cosmetology

COS 102 Oregon Laws and Rules

In this course students will gain knowledge of the laws and rules pertaining to cosmetology established by the Oregon Health Agency. Students will assess the laws and rules as they apply to the field of cosmetology.

COS 104 Salon Management

This course focuses on the understanding of the salon industry, basic business building techniques, professional relationships, salon ownership and salon retailing.

COS 105 Cosmetology Science

Students will gain a basic knowledge of structures and functions of the skin and muscles of the hand and feet, and gain an understanding of chemical elements, bonds, pH and cosmetics used in cosmetology. Students will study the principles of electricity as used in the field of cosmetology.

COS 111 Hair Design Theory I

This class focuses on the beginning background information necessary for Cosmetology students to prepare for Cosmetology clinic/lab sessions and to meet the requirements set forth by the Oregon Board of Cosmetology. Areas to be addressed include hair sculpture, associated tools and their usage and the four basic design forms to complete a woman's hair sculpture, and a men's planer combination form sculpture. Corequisite: COS 111L.

COS 111L Hair Design Theory I Lab

Pre-clinic lab sessions prepare students to meet the requirements set forth by the Oregon Board of Cosmetology. Areas to be addressed include hair design, shampooing, rinsing and conditioning, and haircutting for men and women. Corequisite: COS 111.

COS 112A Hair Design Theory II

This class focuses on the beginning background information necessary for Cosmetology students to prepare for Cosmetology clinic/lab sessions and to meet the requirements set forth by the Oregon Board of Cosmetology. Areas to be addressed include the properties of the scalp, and hair, and both wet and thermal styling. Prerequisite: COS 111. Corequisite: COS 112L.

COS 112B Hair Design Theory II for Barbers

This class focuses on the beginning background information necessary for Cosmetology students to prepare for Cosmetology (Barbering) clinic/lab sessions and to meet the requirements set forth by the Oregon Board of Cosmetology. Areas to be addressed include the properties of the scalp, and hair, and thermal styling. Prerequisite: COS 111. Corequisite: COS 112L.

COS 112L Hair Design Theory II Lab

Pre-Clinic lab sessions prepare students to meet the requirements set forth by the Oregon Board of Cosmetology. Areas to be addressed include hair design, shampooing, rinsing and conditioning, haircutting, and hairstyling. Prerequisite: COS 111. Corequisite: COS 112A or COS 112B.

COS 113 Hair Design Theory III

This class focuses on the beginning background information necessary for Cosmetology students to prepare for Cosmetology clinic/lab sessions and to meet the requirements set forth by the Oregon Board of Cosmetology. Areas to be addressed include basic and advanced perm wrapping patterns and relaxing techniques. Prerequisite: COS 112A. Corequisite: COS 113L.

COS 113L Hair Design Theory III Lab

Pre-Clinic lab sessions prepare students to meet the requirements set forth by the Oregon Board of Cosmetology. Areas to be addressed include hair design, shampooing, rinsing and conditioning, haircutting, hairstyling, and chemical texture services. Prerequisites: COS 112A. Corequisite: COS 113.

COS 121L Esthetics Theory

This course focuses on the beginning background information necessary for Esthetics students to prepare for participation in clinic/lab sessions and to meet requirements set forth by the Oregon Board of Cosmetology. Areas addressed include client relations, infection control, physiology and histology of the skin, skin care products, ingredients and selection, skin analysis, basic facials, facial massage, temporary hair removal products and procedures, microdermabrasion, and the world of makeup. Corequisite: COS 121L.

Academic Fall Courses A - Z

COS 121L Esthetics Theory Lab

These pre-clinic sessions prepare the students to meet the requirements set forth by the Oregon Board of Cosmetology. Areas addressed include client relations, infection control, skin analysis, facials, massage, makeup, temporary hair removal, microdermabrasion, and makeup application. Corequisite: COS 121.

COS 122C Esthetics Clinic II

Clinic-level lab sessions prepare students to meet the requirements set forth by the Oregon Board of Cosmetology. Areas to be addressed include client relations, infection control, skin analysis, facials, massage, makeup, temporary hair removal, and makeup application. Prerequisite: COS 121.

COS 131 Nail Tech Theory

This course focuses on the beginning background information necessary for Nail Technology students to prepare for participation in clinic/lab sessions and to meet requirements set forth by the Oregon Board of Cosmetology. Areas addressed include nail structure and growth, manicuring, pedicuring, nail tips, wraps and nail art. Corequisite: COS 131L.

COS 131L Tech Theory Lab

These pre-clinic sessions prepare the students to meet the requirements set forth by the Oregon Board of Cosmetology. Areas addressed include client relations, infection control, manicures, pedicures, nail enhancements and nail art. Corequisite: COS 131.

COS 132C Nail Tech Clinic II

Clinic-level lab sessions prepare students to meet the requirements set forth by the Oregon Board of Cosmetology. Areas to be addressed include client relations, infection control, manicures, pedicures, nail enhancements and nail art. Prerequisite: COS 131.

COS 141 Barbering Theory

This class focuses on understanding the history of barbering, shaving and beard design, barbering tools and equipment, men's cutting and styling, and theory of basic skin care. Prerequisite: COS 111. Corequisite: COS 141L.

COS 141L Barbering Theory Lab

Pre-Clinic lab sessions prepare students to meet the requirements set forth by the Oregon Board of Cosmetology. Areas to be addressed include analysis of the client's hair, scalp and skin, basic skin care services, and performing basic procedures of sculpture, design, facial hair design, shampoo and conditioning. Prerequisite: COS 111. Corequisite: COS 141.

COS 142C Barbering Clinic II

Clinic-level lab sessions prepare students to meet the requirements set forth by the Oregon Board of Cosmetology. Areas to be addressed include, client relations, infection control, barbering sculpture, hair design, shaving, facial hair design, shampoo and conditioning treatments. Prerequisites: COS 141.

Crop Soil Science

CSS 200 Intro to Crop Science

Principles, practices, and issues relating to production, marketing, and improvement of horticultural and agronomic crops. Comparison of crop production systems, geography of crop production, and cropping calendars. Prerequisite: Year of general biology or equivalent. Corequisite: CSS 200L.

CSS 200L Intro to Crop Science Lab

Laboratory activities relating to CSS 200. Corequisite: CSS 200.

CSS 235 Water Resource Science

An introduction to water science and water uses, including the components of the hydrologic cycle, water as a biological habitat, different uses of water, and water quality for beneficial uses. The course includes hands-on lab activities.

Diesel Technology

DST 101 Diesel Industry Skills Training

Diesel Industry Skills Training is in direct response of industry needs for students to possess the basic skills indicative of certified heavy-duty diesel technicians. The course design encourages students in developing life skills necessary to locate gainful employment in the diesel service industry. Instructional focus includes: seeking and applying for employment, preparing resumes, filling out applications, interviewing techniques, personal appearance and communication skills. Furthermore, emphasis is placed upon the skills required to retain industry employment including: punctuality, regular attendance, following directions, general shop practices, productivity, hourly and flat-rate compensation, time-clock management, problem solving, employee loyalty and responsibility, employee professionalism and good customer service skills. The class will provide theory and related hands-on experience on live vehicles as the foundation for advanced heavy-duty diesel courses.

DST 110 Diesel Electrical/Electronic Systems

This course provides instruction in basic electricity and electronic systems. This course provides the theory and operating characteristics of heavy-duty diesel electrical and electronic systems required for successful completion of ASE area T6 Med/Hvy Truck: Electrical/Electronic Systems. Instructional focus includes: electrical principles, basic circuit configuration, Ohm's law, electrical components, wiring and wiring repairs, common tools and testing equipment, basic testing and problem isolation. The student will work with multi meters and other electrical test equipment in developing troubleshooting techniques required for successful diagnosis of heavy-duty diesel starting and charging systems, advanced electronic systems, heavy-duty diesel processing units, multiplexing, electrical accessories and body/chassis electronic control systems. Corequisite: Verifiable registration/attempted testing of ASE area T6: Med/Hvy Truck: Electrical/Electronic Systems.

DST 135 Engine Theory & Service - Diesel

Basic theory and operating characteristics of heavy-duty truck diesel engines and related systems required for successful completion of ASE areas T2 Medium/Heavy Truck: Diesel Engine Repair. Lubrication and cooling systems, sealing materials, high performance theory, and diesel engine systems diagnosis.

DST 143 Fuel Delivery Systems I

Heavy-duty gasoline/diesel engine theory, component operation and system(s) repair practices required for successful completion of ASE area T1 and T2 Med/Hvy Truck: Diesel and Gas Engine Repair. Fuel performance, air-fuel mixtures, fuel system diagnosis/service, fuel delivery system components, mechanical fuel injection systems, diagnosis, and function testing. Students develop troubleshooting/repair techniques utilizing diagnostic stratagems.

Early Childhood Education

ECE 101 **Child, Family, Community**

The study of influences on children and families which impact child and family behaviors, values, attitudes, beliefs, and morals. Topics include parenting patterns, cultural, religious and socioeconomic influences, peer, school, media impacts, community ecology, and public policy.

ECE 103 **Assessment & Evaluation**

Students will develop knowledge and skills in observing and assessing growth and behavior of children and the adult roles in supporting children's development. The student will examine the importance of developmentally appropriate practices (DAP) assessment and documentation. Students will learn and apply observation techniques. Students are required to spend additional time outside of class observing children in individual and group settings. Prerequisite: PSY 235.

ECE 122 **Env and Curr in Early Care and Ed**

An introduction to an overview of creating physical and social environments and curriculum for children six weeks to six years in home or center-based programs. Course covers theories and relationships between physical and social space, activities, experiences, and materials. Students are introduced to the use of developmentally and culturally appropriate practices in planning, selecting, and evaluating environments and curriculum for young children.

ECE 135 **Mathematics and the Young Child**

This course is designed to teach students effective strategies to recognize and promote mathematical development and learning in all young children. Students will explore what mathematics looks like for infants, toddlers, and preschoolers and learn specific ways to facilitate young children's mathematical development.

ECE 275 **Anti-Bias Curriculum**

Explore the role of the adult in helping children accept and appreciate diversity and uphold values of equity, inclusion, and social justice.

ECE 280 **Coop Wk Exp: Early Childhood Education**

On-the-job, paid or volunteer, experiences which allow for the application and development of knowledge, skills, and attitudes learned through the on-campus program so that the student can learn all aspects of the industry. Cooperative work experience is offered for variable credit based on the student's objectives. Instructor permission is required and the student must locate a job site for the course. All students must successfully pass a criminal background check.

Economics

ECO 201 **Principles of Economics: Microeconomics**

This course covers principles of rational choice, price determination, market resource allocation, competition, production, market systems, and the role of government in the economy. It also covers individual units in the economy. Recommended: Successful completion of MTH 070 or above and WRI 121 placement.

Education

EDU 113 **Instructional Strategies in Language Arts & Reading**

Covers various instructional methodologies, practice in theme unit planning, integration of content areas, focus on authors in children's literature, practice and instruction in cooperative groups.

EDU 200 **Intro to Education**

Examines daily experiences in the schools. Includes discussing personal responses to school situations; students, personnel, the roles of public schools in American society and financial, legal, and administrative implications on instruction.

EDU 280 **Coop Wk Exp: Education**

On-the-job, paid or volunteer, experiences which allow for the application and development of knowledge, skills, and attitudes learned through the on-campus program. Cooperative work experience is offered for variable credit based on the student's objectives. Instructor permission is required. All students must successfully pass a criminal background check.

Emergency Medical Technician

EMT 151 **Emergency Medical Technician Part 1**

This course is the first half of a course that prepares students for the National Registry Certification and licensure in Oregon as an Emergency Medical technician. The course is designed to develop a student's skills in the recognition of symptoms of illness, injuries, and the proper procedures of emergency care. Prerequisites: MTH 060 and MTH 065 or MTH 070 and WRI 121 or placement into MTH 070 and WRI 121. Completion of Health Care Provider CPR, and all required immunizations. Prior to beginning clinical rotations, students are required to submit a criminal background check and drug screen. Corequisite: EMT 151L.

EMT 151L **Emergency Medical Tech Part 1 Lab**

Laboratory activities relating to EMT 151. Corequisite: EMT 151.

EMT 169 **EMT Rescue**

Provides technical information on various rescue situations. Covers equipment, tools, trench rescue, shoring, ropes and knots, warehouse searches, outdoor searches, rescue in situations involving elevation differences, patient packaging, water and ice rescue, and vehicle extrication.

English

ENG 104 **Intro to Literature (Fiction)**

Explores fiction as an art form that provokes thought and challenges social norms. Examines fictional works, such as short stories and novels, from diverse cultures and historical periods; considers these works as expressions of human experience. Corequisite: WRI 121.

ENG 261 **Literature of Science Fiction**

Introduces science fiction. Explores historical and contemporary themes. Covers a variety of authors and examines the art and function of this genre. Recommended: 100-level reading. Prerequisite: WRI 121.

Environmental Studies

ENV 170 Environmental Science

Examines major environmental questions facing the world today. Includes population growth, matter and energy resources, ecosystems, pollution, and environment and society. Explores a broad range of environmental issues including sustainability, the interconnection of the economy with ecosystem, short-term versus long-term gains, and the trade-offs in balancing problems and solutions. Recommended: Placement into WRI 095. Corequisite: ENV 170L.

ENV 170L Environmental Science Lab

Laboratory activities relating to ENV 170. Corequisite: ENV 170.

Emergency Response and Operations

ERO 100 Intro to Emergency Response and Operations

Prepares students for a career in emergency services. This course includes an overview of emergency medical services, law enforcement services and firefighter services, career opportunities within and related fields.

Fire Science (Structural)

FRP 111 Fire Fighter I

This entry level fire training course, in conjunction with its companion course, FRP 111L prepares the student to meet the job performance requirements for career and volunteer firefighters whose duties are primarily structural in nature as described in NFPA 1001 Standard for Fire Fighter Professional Qualifications adopted by The State of Oregon Department of Public Safety Standards & Training (DPSST) as the foundation for fire recruit training. The course emphasizes academic learning, manipulative skills, and team building. Recommended: ERO 100. Prerequisites: 18 years or older with a valid state driver's license and insurable. Students are required to submit and pass a criminal background investigation and a health and drug screening. Students are required to sign a waiver prior to participating in a Candidates Physical Ability Test (CPAT). Students must possess or obtain current certification as an American Heart Association Health Care Provider CPR or American Red Cross Basic Life Support for the Professional Rescuer CPR prior to applying for state certification as a Firefighter I. Corequisite: FRP 111L.

FRP 111L Firefighter 1 Lab

This entry level fire training course, in conjunction with its companion course, FRP 111 prepares the student to meet the job performance requirements for career and volunteer firefighters whose duties are primarily structural in nature as described in NFPA 1001 Standard for Fire Fighter Professional Qualifications adopted by The State of Oregon Department of Public Safety Standards & Training (DPSST) as the foundation for fire recruit training. The course emphasizes academic learning, manipulative skills, and team building. Recommended: ERO 100. Prerequisites: 18 years or older with a valid state driver's license and insurable. Students are required to submit and pass a criminal background investigation and a health and drug screening. Students are required to sign a waiver prior to participating in a Candidates Physical Ability Test (CPAT). Students must possess or obtain current certification as an American Heart Association Health Care Provider CPR or American Red Cross Basic Life Support for the Professional Rescuer CPR prior to applying for state certification as a Firefighter I. Corequisite: FRP 111.

FRP 132 Fire Apparatus and Equipment

Theory of pump operation, types and features of various pumps, practical operation of fire pumps and accessories. Includes drafting, hydrant and tanker operations, and rule-of-thumb fireground hydraulic calculations. Topics addressed include the different types of fire apparatus and their function including wildland firefighting apparatus and municipal apparatus. Prerequisites: 18 years old with a valid state driver's license and insurable and ERO 110, FRP 111, FRP 111L.

General Agriculture

GAG 200 Exploring Agriculture

Exploration of the Agricultural Sciences major and career opportunities.

GAG 280 Coop Wk Exp: General Agriculture

On-the-job, paid or volunteer, experiences which allow for the application and development of knowledge, skills, and attitudes learned through the on-campus program so that the student can learn all aspects of the industry. Cooperative work experience is offered for variable credit based on the student's objectives. Instructor permission is required and the student must locate a job site for the course.

Geography

GEO 105 Physical Geography

Introduces students to the geographical study of earth's physical landscape and process. Topics include the biosphere, geosphere, atmosphere, and human-environment interactions. Concepts are applied to a variety of regions including Oregon and the Klamath Basin. Satisfies lab science requirement. Recommended: WRI 121 placement. Corequisite: GEO 105L.

GEO 105L Physical Geography Lab

Laboratory activities relating to GEO 105. Corequisite: GEO 105.

GEO 107 Human Cultural Geography II

Introduces the study of human cultural geography with a focus on developing nations. Regional topics include the Middle East, Asia, Africa, and the Pacific Islands. Recommended: WRI 121 placement.

Health Studies

HEA 100 Nursing Assistant I

This course provides the foundation for student success with state certification testing, workforce training aimed at entry-level positions. Students will practice learned techniques in personal care, dining, emergency care, rehabilitation and interpersonal skills with emphasis on safety, infection control, legal and ethical considerations while in the acute and sub-acute facilities. Successful course completion does not guarantee state certification. Corequisites: HEA 100L and HEA 100C.

HEA 100C Nursing Assistant Clinical

This course provides the foundation for student success with state certification testing, workforce training aimed at entry-level positions. Students will practice learned techniques in personal care, dining, emergency care, rehabilitation and interpersonal skills with emphasis on safety, infection control, legal and ethical considerations while in the acute and sub-acute facilities. Successful course completion does not guarantee state certification. Corequisites: HEA 100 and HEA 100L.

Health Information Management

HIM 103 Intro to Health Services

Introduction to health services with a focus on understanding the healthcare system including financing of healthcare, organizations and settings, non-financial resources and evaluation, regulation, and assessment. Prerequisite: WRI 095 or WRI 121 or placement into WRI 121.

HIM 104 Intro to Health Data and Content I

This course provides an overview of healthcare delivery systems and health information fields. Includes origin and uses of health records, admitting functions, filing and numbering systems, interdepartmental communication, and computation of basic census data, micrograph concepts, and electronic data interchange. Introduction to application of healthcare procedures via a web-based virtual lab.

HIM 105 Legal & Ethical Aspects of Healthcare

Introduces the legal basis for medical practice, confidentiality, HIPAA, voluntary and involuntary release of medical information, professional liability, consents for treatment and other procedures, and medical-ethical issues.

HIM 204 Healthcare Delivery & Technology

This course provides analysis of the common terms and procedures related to the development and implementation of information systems, specifically networks and interfaces, in reference to the EHR, the personal health record, PHR, public health, and other administrative applications systems. Database architecture and design along with systems analysis and database informatics will also be covered, in addition to an overview of healthcare and its relationship to technology. Prerequisite: HIM 106.

HIM 232 Medical Revenue – Insurance and Billing Application

Students will learn accurate processing of health insurance claims. Thorough instructions in all aspects of medical insurance including plan options, payor requirements, state and federal regulations, abstracting of documents, accurate completion of claims, coding diagnoses and procedures. Determine the accuracy of abstracted data elements for data base integrity and claims processing. Includes contemporary prospective payment systems and key health plans, charge master maintenance, and evaluation of fraudulent billing practices. ICD-10-CM, CPT-4 and HCPCS will be reviewed and there will be hands-on application of EHR- Go Coding; Inpatient and outpatient. Recommended: HIM 131 and HIM 231.

HIM 234 Advanced Medical Coding

This course promotes the advanced understanding of coding and classification systems, particularly ICD-10-CM, and CPT and HCPCS, and introduction and application of ICD-10-PCS, in order to assign valid diagnostic and procedure codes. Diagnostic and procedural coding continues at an advanced level of hands-on application and classification with considerable time spent abstracting, coding, and indexing diagnostic and procedure codes. Prerequisites: HIM 131 and HIM 231.

HIM 272 HIM Leadership and Management

Covers principles of personnel supervision and management of a health information department.

HIM 280 Coop Wk Exp: HIM Prof Prac II

Provides practicum experience in health information management functions utilizing medical record technologies in a classroom simulation and/or under the direct supervision of facility personnel in local health care facilities.

HIM 291 Exam Review: RHIT

Confidently prepare for the RHIT exam with Registered Health Information Technician (RHIT) Exam Preparation textbook. The exam experience is a simulation in the textbook with 850 multiple-choice questions, including mock exams and assisting with completing the exam application. Prerequisite: Completion of the HIM AAS degree is required.

Health & Physical Education

HPE 131 Introduction to Exercise/Sport Science

Introduces students to the profession of exercise science including an overview of basic concepts and careers in exercise physiology, athletic training, personal training, coaching, sports medicine, physical therapy and fitness management. Provides a comprehensive introduction to any student who is considering a career in the area of health, fitness, wellness, exercise physiology and sports medicine. Also, includes guest speakers currently working in the profession, as well as tours of local fitness facilities. Various fitness certifications are compared and contrasted. Prerequisite: WRI 095 or WRI 121 or placement into WRI 095.

HPE 207 Stress Management

Students learn the basis for various components of stress and how to recognize and cope appropriately with physical, occupational, social, school, and environmental stressors. The course emphasizes achieving lifestyle balance and shows students how to develop and practice physiologic relaxation techniques and stress reduction methods.

HPE 225 Nutrition

A study of food and nutrition, including how they relate to health and disease. Students are exposed to basic nutrition including nutrient needs, how nutrients function in the body, energy balance, and diet planning for various medical conditions. Provides an in-depth look at current topics and the American diet.

HPE 295 Health & Fitness for Life

Explores the role of wellness, physical fitness, stress, nutrition, and cardiovascular health in promoting an individual's health and well-being. Fitness testing and fitness lab are included.

History

HST 101 Western Civilization I: Ancient World to 1000

Studies the ancient civilizations of Egypt, Mesopotamia, Greece, and Rome. Topics also include development of early Christianity and early Medieval Europe. HST 101, 102, and 103 may be taken out of sequence. Recommended: WRI 121 placement.

HST 201M United States History I

Surveys North American history from the Age of Exploration through the Civil War. Studies include political, social, and economic trends and events. Recommended: Placement scores at WRI 121.

Medical

MDA 101 Medical Terminology I

Covers medical terminology prefixes, suffixes, word roots, and abbreviations by body system.

MDA 102 Medical Terminology II

Covers medical terminology prefixes, suffixes, word roots, and abbreviations by body system. Prerequisite: MDA 101 with a grade of "C" or better.

MDA 128 Anatomy & Physiology for Health Science Professional I

Provides the conceptual framework, factual knowledge, and analytical skills needed to pursue a career in Allied Health. Students will examine anatomical terminology, basic chemistry, cell structure and functions, tissues, glands, and membranes; disease and disease producing organisms; integumentary system; skeletal system; muscular systems; nervous system: including the spinal cords, spinal nerves, the brain, and the cranial nerves; and the sensory system. Note: This course will not transfer as a science course. Recommended: MDA 101.

Manufacturing Engineering Tech

MET 102 Basic Engineering Materials

Introduces materials and metallurgy to include structure, selection, and use. Survey of materials used in industry and their physical and chemical attributes as they relate to properties, corrosion, and engineering applications. Major consideration given to metal alloys. Introduction to polymers, ceramics, and composites included. Recommended: WLD 101.

MET 241 CAD for Mechanical Design I

Instruction and practice of AutoCAD (mechanical) software in 2D environment. Utilize 2D software practice to develop into an apprentice level wireframe computer aided design (CAD) technician. Corequisite: MET 241L.

MET 241L CAD for Mechanical Design I Lab

Laboratory activities related to MET 241. Corequisite: MET 241.

Manufacturing

MFG 120 Manufacturing Process I

An introductory course in metal removal processes emphasizing drilling, milling, and lathe processes. Includes tool-bit grinding. Emphasis on production speeds and feeds. All lab practice will be on conventional machines. Corequisite: MFG 120L.

MFG 120L Manufacturing Process I Lab

Laboratory activities related to MFG 120. Corequisite: MFG 120.

MFG 280 Coop Wk Exp: Manufacturing Engineering

On-the-job (paid or volunteer) experiences which allow for the application and development of knowledge, skills, and attitudes learned through the on-campus program. Cooperative work experience is offered for variable credit based on the student's objectives. Instructor permission is required.

Multimedia

MMT 239 Drawing/Adobe Illustrator

Introduces the basics of digital illustration working with both vector graphics and photo editing. Applies tablet technology and screen-based drawing to create digitized graphic elements such as image header, sidebar, banner, logo, and other elements commonly used design. Uses various software platforms, but focuses mainly on Adobe Digital Illustrator. Recommended: ART 131. Corequisite: MMT 239L.

MMT 239L Digital Draw/Adobe Illustrator Lab

Laboratory activities related to MMT 239. Corequisite: MMT 239.

MMT 240 Digital Photography & Photoshop

Students will learn the basics of digital photography, composition, and manipulation of images while using Adobe Photoshop. Investigate competent compact digital and DSLR camera handling techniques. The course emphasizes exposure control, digital management, image editing, printing and presentation. Examines important photographic themes, lighting, and composition. Use Photoshop in acquiring, preparing, manipulating, storing, outputting and/or uploading and displaying digital images. Requires access to a camera with manual exposure controls, DSLR (digital single-lens-reflex) cameras are preferred. Corequisite: MMT 240L.

MMT 240L Digital Photography & Photoshop Lab

Laboratory activities relating to MMT 240. Corequisite: MMT 240.

MMT 260 Video Production I

Introduces digital video production, with a focus on the fundamentals of project planning, basic camera functions, shooting techniques, lighting principles, and audio recording fundamentals. Includes preproduction issues, production terminology, and evaluation of industry etiquette. Recommended: MMT 240. Corequisite: MMT 260L.

MMT 260L Video Production I Lab

Laboratory activities relating to MMT 260. Corequisite: MMT 260.

Mathematics

MTH 010 Basic Math

Whole number and integer arithmetic. Develops skills with mathematical operations using whole numbers, integers, fractions, and decimals. Recommended: If available, students enrolling in this class are strongly encouraged to co-enroll in a section of CGS 010.

MTH 020 Prealgebra

This course will cover ratios, rates, proportion, percent, measurement, and introduces the concepts of basic statistics, charts, and graphs. In addition the basic concepts of elementary algebra will be covered. Scientific calculator with fraction capabilities required. Prerequisite: MTH 010 or placement into MTH 020.

MTH 052 Math Review for Higher Placement

Students will use computer software to cover material from MTH 010 to MTH 095. This class will meet three hours per week in a computer lab. Class attendance is mandatory. Goals and pace will be set for the individual student by the instructor. Successful completion requires the student to place at least one level higher in the developmental math sequence. This course is graded on a pass (P) / no pass (NP) basis and is not computed in the GPA. Recommended: Recent placement into MTH 010, MTH 020, or MTH 070 with remaining access to MyMathTest placement test.

Academic Fall Courses A - Z

MTH 070 **Elementary Algebra**

The following topics are covered: Fundamental properties of algebra, solutions of linear and quadratic equations, order of operations, rules of exponents, arithmetic operations of polynomials, factoring of polynomials, the two-coordinate graphing plane, point plotting, graphing of linear equations, and basic geometric and statistical formulas and problem solving. Concepts will be introduced numerically, graphically, and symbolically. Results will be communicated in oral and written form. Scientific calculator with fraction capabilities required. Prerequisite: MTH 020 with a grade of "C" or better or placement into MTH 070.

MTH 095 **Intermediate Algebra**

The following topics are covered: Fundamentals of algebra, factoring of polynomials, solving quadratics using various techniques, simplifying of rational expressions, solving rational equations, simplifying of radical expressions, solving radical equations, definition of functions, evaluation of functions, and graphing of quadratics. Word problems will be included throughout the course. Concepts will be introduced numerically, graphically, and symbolically. Results will be communicated in oral and written form. Scientific calculator with fraction capabilities required. Prerequisite: MTH 060 and MTH 065 with a grade of "C" or better or MTH 070 with a grade of "C" or better or placement into MTH 095.

MTH 104 **Math in Society Plus**

This is a math course that provides additional instruction and support for MTH 105 through math and study skills building and through just in time remediation necessary to be successful in MTH 105. Students who place into MTH 105 or higher are not required to take MTH 104, but may still elect to take MTH 104. Corequisite: MTH 105.

MTH 105M **Math in Society**

An exploration of present-day applications of mathematics focused on developing numeracy. Major topics include quantitative reasoning and problem-solving strategies, probability and statistics, and financial mathematics; these topics are to be weighted approximately equally. This course emphasizes mathematical literacy and communication, relevant everyday applications, and the appropriate use of current technology. Prerequisites: MTH 065 or MTH 070 or MTH 095 or MTH 098 or placement into MTH 105 and WRI 095 or WRI 121 or placement into WRI 121.

MTH 105Z **Math in Society**

An exploration of present-day applications of mathematics focused on developing numeracy. Major topics include quantitative reasoning and problem-solving strategies, probability and statistics, and financial mathematics; these topics are to be weighted approximately equally. This course emphasizes mathematical literacy and communication, relevant everyday applications, and the appropriate use of current technology. Prerequisites: MTH 065 or MTH 070 or MTH 095 or MTH 098 or placement into MTH 105 and WRI 095 or WRI 121 or placement into WRI 121.

MTH 111Z **Precalculus I: Functions**

A course primarily designed for students preparing for trigonometry or calculus. This course focuses on functions and their properties, including polynomial, rational, exponential, logarithmic, piecewise-defined, and inverse functions. These topics will be explored symbolically, numerically, and graphically in real-life applications and interpreted in context. This course emphasizes skill building, problem solving, modeling, reasoning, communication, connections with other disciplines, and the appropriate use of present-day technology. Prerequisite: MTH 095 with a grade of "C" or better or placement into MTH 111.

MTH 112Z **Precalculus II: Trigonometry**

A course primarily designed for students preparing for calculus and related disciplines. This course explores trigonometric functions and their applications as well as the language and measurement of angles, triangles, circles, and vectors. These topics will be explored symbolically, numerically, and graphically in real-life applications and interpreted in context. This course emphasizes skill building, problem solving, modeling, reasoning, communication, connections with other disciplines, and the appropriate use of present-day technology. Prerequisite: MTH 111 with a grade of "C" or better.

MTH 211 **Foundations of Elementary Math I**

This course is for prospective K-8 teachers. Emphasizes Polya's problem solving process, patterns and sequences, set theory, numeration systems, number bases, number theory, and modular arithmetic. Will also introduce teaching pedagogy and development of teaching materials. Prerequisite: MTH 095 with a grade of "C" or better or MTH 111 with a grade of "C" or better or placement into MTH 111.

MTH 251 **Calculus I**

Computation techniques for calculating the limit of a function. Computational techniques for calculating and applications of the derivative of a function. Prerequisite: MTH 112 with a grade of "C" or better.

MTH 252 **Calculus II**

Computational techniques for and applications of definite and indefinite integrals. Prerequisite: MTH 251 with a grade of "C" or better.

Music

MUS 206M **History of Rock Music**

Examines rock music's roots and development, its innovators and significant events through a cultural, as well as musical, perspective. Prerequisite: WRI 121.

Nursing

NSG 110 **Foundations of Nursing Practice (didactic)**

This course provides students with the foundations of the art and science of nursing. Students are exposed to the curricular concepts and core competencies that define the roles and responsibilities of a nurse. Emphasis is on homeostasis and regulation, comfort, safety, communication, nursing attributes, nursing process, and introduction to pharmacology. Prerequisite: Admission to the nursing program. Corequisite: NSG 110C.

Academic Fall Courses A - Z

NSG 110C Foundations of Nursing Practice (application)

The student will begin applying concepts through clinical skills in classroom, laboratory, and/or clinical settings. Focus is placed on acquiring proficiency needed to carry out basic independent and interdependent nursing actions that assist patients across the lifespan in meeting their healthcare needs. Principles of communication, assessments, safety, and caring interventions, including accurate calculation, measurement, and administration of medications will be included. Prerequisite: Admission to the nursing program. Corequisite: NSG 110.

NSG 210 Health & Illness Concepts III (didactic)

This course builds upon prior nursing concepts covering health and illness concepts across the lifespan. Concepts covered are related to advanced reproduction, grief and loss, cognition, mood, self, infection, cellular regulation, mobility, fluid and electrolyte, metabolism and comfort. Prerequisites: NSG 112 and NSG 112C. Corequisites: NSG 210C.

NSG 210C Health & Illness Concepts III (application)

This course allows the students to apply curricular concepts and nursing skills in the management of care for clients across the lifespan with acute, chronic and health promotion needs while developing aptitude in the supervision of others. Corequisite: NSG 210.

Office Systems

OST 131 10-key Calculators

Students will learn techniques to develop 10-key skills by touch. This course also covers the use of electronic printing calculators to solve simple business and mathematical problems.

Physical Education

PED 182C Beginning Fitness & Walking

Beginning level, self-paced walking programs and a variety of conditioning exercises for specific body areas. Provides instruction for integrating walking into a lifetime fitness program.

PED 182R Fitness and Conditioning for First Responders

This course is designed to provide general fitness training opportunities, guidelines and strategies to prepare first responders for careers in firefighting, law enforcement, and emergency technical services.

PED 186D Ballroom Dance I

Introduces the fundamental principles of ballroom dance. Places emphasis on proper partnering, style, and phrasing. Focuses on elementary steps of foxtrot, waltz, swing, cha-cha, and rumba.

Philosophy

PHL 204M Philosophy of Religion

Explores various philosophical perspectives on religion and issues traditionally taken up by religion, including the existence and attributes of God, faith, reason and mysticism, religion and science, religion and morality, religious language, and life after death. Prerequisite: WRI 121.

Physics

PHY 101 Fundamentals of Physics I

Laboratory science course designed for non-science majors. First term of a three-term series. A conceptual study of physics. Includes introduction to the scientific method, study of motion, mechanics, vectors, energy, simple machines, satellite motion, and atomic structure. Prerequisites: MTH 065 or MTH 070 or MTH 095 or MTH 111 or placement into MTH 070 or MTH 095 or MTH 111 and WRI 095 or WRI 121 or placement into WRI 121. Corequisite: PHY 101L.

PHY 101L Fundamentals of Physics I Lab

Laboratory activities relating to PHY 101. Corequisite: PHY 101.

PHY 211 General Physics I (Calculus-based)

Topics include concepts in mechanics and their relationship to practical applications for science and engineering majors. Prerequisites: MTH 251. MTH 251 can be taken concurrently with PHY 211. Corequisite: PHY 211L.

PHY 211L Gen Physics I Lab

Laboratory activities relating to PHY 211. Corequisite: PHY 211.

Psychology

PSY 101 Psychology & Human Relations

Focuses on practical and personal applications of psychological principles. Encourages applications of psychological principles to daily living and to human interactions such as work, leisure, school, and relationships. This course is designed for students who are not majoring in psychology. This course transfers as a general elective.

PSY 201A General Psychology I

Introduction to the general principles of psychology. Topics include history, research methods, brain and behavior, genes and environment, human development, and sensing and perception. Note — the introduction to psychology series does not have to be taken in order. PSY 201A is the recommended first class in the series. Prerequisite: WRI 121.

PSY 201M General Psychology I

Introduction to the general principles of psychology. Topics include history, research methods, brain and behavior, genes and environment, human development, sensing and perception, consciousness, and learning. Prerequisite: WRI 121.

PSY 203A General Psychology III

Introduction to the general principles of psychology. Topics include personality, emotion and health, psychological disorders and treatment, and social psychology. Note — the introduction to psychology series does not have to be taken in order. Recommended: PSY 201A. Prerequisite: WRI 121.

PSY 226 Abnormal Psychology II

Overview of legal and ethical issues related to abnormal psychology. Specific disorders covered include dissociative, substance use, schizophrenia, childhood and adolescent. Suicide is examined as a topic specific to abnormal psychology. Various treatment modalities are also reviewed. Prerequisite: PSY 225.

Academic Fall Courses A - Z

PSY 228 Positive Psychology

This course explores the components necessary to help a person flourish in their environment by addressing the biopsychosocial aspects that contribute to positive behaviors and human strengths. Material will provide an overview of the theories of happiness, importance of self-care and positive social cognitions, utilizing strengths in personal and professional venues, and means of achieving healthy relationships personally and with one's community. Prerequisite: WRI 121 or placement into WRI 121.

PSY 233 Psychology of Violence and Aggression

This course addresses the developmental, social, physiological, and cultural aspects that contribute to violence and aggression as well as the legal issues involved. Includes an overview of the theories of aggression, as well as factors influencing family violence, violent children, mob mentality, hate crimes, war and terrorism, stalking, sex crimes, and murder. Prerequisite: Successful completion of WRI 121, or instructor approval.

PSY 235 Human Growth & Development I

A biosocial study of human development from conception to adolescence. Discusses the biological and social processes, i.e., cognition, personality, emotion, and social, affecting the developing child. Applications to health care, family, and education are discussed. Recommended: Previous coursework in psychology.

PSY 236 Human Growth & Development II

A psychological study of the continuing development of the human being from adolescence through old age and death. Discussion focuses on the social and healthcare issues of adulthood. Applications to healthcare, family, and social policy. Prerequisite: PSY 235.

Spanish

SPA 101 First Year Spanish I

First in a three-course series designed to develop basic communication skills in oral and written Spanish. Introduces learners to the rich culture of the Spanish-speaking world, including listening, speaking, reading, writing, pronunciation, structure, vocabulary, and culture.

SPA 101M First Year Spanish I

First in a three-course series designed to develop basic communication skills in oral and written Spanish. Introduces learners to the rich culture of the Spanish-speaking world, including listening, speaking, reading, writing, pronunciation, structure, vocabulary, and culture. NOTE: This course is a stand-alone course. It does not align with the Spanish series.

Statistics

STA 243Z Elementary Statistics I

A first course in statistics focusing on the interpretation and communication of statistical concepts. Introduces exploratory data analysis, descriptive statistics, sampling methods and distributions, point and interval estimates, hypothesis tests for means and proportions, and elements of probability and correlation. Technology will be used when appropriate. Prerequisite: MTH 095 with a grade of "C" or better or MTH 105 with a grade of "C" or better or MTH 111 with a grade of "C" or better or placement into MTH 111.

Welding

WLD 101 Welding Processes & Applications

Introduction to Welding covers flat and horizontal positions with oxygen-acetylene welding OAW, stick SMAW, Mig GMAW on mild steel, Tig GTAW on aluminum, safety, setting up and shutdown.

WLD 102 Blueprint Reading

Covers the language of blueprints including lines, views, dimensioning, print organization, welding symbols, and structural shapes.

WLD 114 Shielded Metal Arc Weld: Mild Steel I

Develops knowledge and manipulative skills in the use of E7018 mild steel electrodes when performing various welds in the flat, horizontal, and vertical positions. Prerequisite: WLD 101.

WLD 115 Shielded Metal Arc Weld: Mild Steel II

Develop intermediate and advanced skills in shielded metal arc welding for success in the metal fabrication industry. Includes preparation of joints for proper setup and design using 1/4 inch and thicker mild steel. Prerequisite: WLD 114.

WLD 131 Gas Metal Arc Welding/Flux Cored Arc Welding

Develops knowledge and manipulative skills welding with solid wire on ferrous and non-ferrous materials using short arc in all four positions and spray arc in the flat and horizontal positions. Develops knowledge and manipulative skills welding with Flux-Cored Arc Welding on mild steel in all positions. Prerequisite: WLD 101.

WLD 253 Welding Cert Practice 3/8 or 1 Inch Mild Steel

Practice for the American Welding Society Mild Steel Welding Certification tests using mild steel electrodes in the horizontal, vertical, and overhead positions. Prerequisite: WLD 114.

WLD 254 GMAW/FCAW Certification Practice

Practice for the American Welding Society Structural Qualification tests using GMAW/FCAW mild steel electrodes in the horizontal, vertical, and overhead positions. Prerequisites: WLD 114 and WLD 131.

WLD 255 GTAW Certification Practice

Practice for American Welding Society Qualification tests using the gas tungsten arc welding process on aluminum and stainless steel in the horizontal, vertical, and overhead positions. Prerequisites: WLD 101 and WLD 221.

WLD 280 Coop Wk Exp: Welding

On-the-job, paid or volunteer, experiences which allow for the application and development of knowledge, skills, and attitudes learned through the on-campus program. Cooperative work experience is offered for variable credit based on the student's objectives. Prerequisite: Instructor permission is required.

Academic Fall Courses A - Z

Writing

WRI 090 **Writing Fundamentals**

Develops proficiency in introductory writing skills at sentence, paragraph, and short composition level. Reinforces grammar and sentence-level editing skills in the context of paragraphs and short essays. Covers critical reading, information literacy, and research skills, including APA documentation style. Corequisite: WRI 090L.

WRI 090L **Writing Fundamentals Lab**

Laboratory activities relating to WRI 090. Corequisite: WRI 090.

WRI 095 **Intro to Expository Writing**

Introduces college-level skills in writing paragraphs, essays, and reading critically. Students learn to revise for clarity, structural integrity, and correct grammar. Prerequisite: WRI 090 with a grade of "C" or better or placement into WRI 095.

WRI 100 **Co-Requisite Writing**

This course provides the support necessary for students to succeed in writing-intensive classes. It is mandatory for students who place in WRI 90 to enroll in WRI 95 and students who place in WRI 95 to enroll in WRI 121. The course is also an elective for students who need additional support to be successful in other courses, such as WRI 122, WRI 227, and discipline-specific courses. This course is graded on a pass (P) / no pass (NP) basis and is not computed in the GPA.

WRI 114 **Intro to Electronic Research**

Introduction to college-level electronic research, developing search strategies, selecting and evaluating appropriate sources, documentation and citation, and a thorough understanding of the economic, legal, ethical, and social issues surrounding electronic information retrieval. Recommended: WRI 095.

WRI 121M **Composition I**

WRI 121M engages students in the study and practice of critical thinking, reading, and writing. The course focuses on analyzing and composing across varied rhetorical situations and in multiple genres. Students will apply key rhetorical concepts flexibly and collaboratively throughout their writing and inquiry processes. Prerequisite: WRI 095 with a grade of "C" or better or placement into WRI 121.

WRI 121Z **Composition I**

WRI 121Z engages students in the study and practice of critical thinking, reading, and writing. The course focuses on analyzing and composing across varied rhetorical situations and in multiple genres. Students will apply key rhetorical concepts flexibly and collaboratively throughout their writing and inquiry processes. Prerequisite: WRI 095 with a grade of "C" or better or placement into WRI 121.

WRI 122Z **Composition II**

WRI 122Z builds on concepts and processes emphasized in WRI 121Z, engaging with inquiry, research, and argumentation in support of students' development as writers. The course focuses on composing and revising in research-based genres through the intentional use of rhetorical strategies. Students will find, evaluate, and interpret complex material, including lived experience; use this to frame and pursue their own research questions; and integrate material purposefully into their own compositions. Prerequisite: WRI 121 with a grade of "C" or better.

WRI 227Z **Technical Writing**

WRI 227Z introduces students to producing instructive, informative, and persuasive technical/professional documents aimed at well-defined and achievable outcomes. The course focuses on presenting information using rhetorically appropriate style, design, vocabulary, structure, and visuals. Students can expect to gather, read, and analyze information and to learn a variety of strategies for producing accessible, usable, reader-centered deliverable documents that are clear, concise, and ethical. Prerequisite: WRI 121 with a grade of "B" or better or WRI 122 with a grade of "C" or better.

WRI 242 **Creative Writing - Poetry Workshop**

Introduces students to the craft of writing poetry. Students submit approximately one completed poem per week for discussion, analysis and feedback in round-table workshops. In addition, students will analyze techniques and structures of works by established poets. Recommended: 100-level reading and writing skills.

WRI 245 **Creative Writing - Advanced Poetry Workshop**

In this advanced course, students continue to apply the techniques and structures of poetry introduced in WRI 242. Students submit drafts (approximately two complete poems per week) for discussion, analysis and feedback in round table workshops. In addition, students will analyze works of established poets. Prerequisite: WRI 242. Recommended: ENG 106 and WRI 121.

Work Experience

TEX 280 **Coop Wk Exp: Seminar**

Introduces students to the selection processes and procedures necessary to gain successful employment. Topics covered include: Job search techniques, networking, resumes, cover letters, thank-you letters, and interview techniques. Recommended: To be taken near completion of degree or certificate. Prerequisites: WRI 117 and WRI 121.

Courses ending with a 'Z' in the course code adhere to Common Course Numbering (CCN) for transfer as approved by the Higher Education Coordinating Commission (HECC).



ACCOUNTING

- Earn a degree or certificate in Accounting fully online.
- Learn management, finance, business law, and economics in addition to communication and interpersonal skills.
- Gain experience using industry standard technology and equipment to gain certifications.
- Transfer to a four-year university or leave KCC ready to work as a payroll clerk, accountant, bookkeeper, or more!

www.klamathcc.edu/accounting

- Choose an emphasis in marketing or management.
- Earn your degree completely online, in-person, or both!
- Learn general accounting principles, business law, and how to create a business plan.
- Gain a competitive edge in your current career or use your skills to create a new business.

Potential careers:

- Manager,
- Entrepreneur,
- Marketer, or
- Social media manager.



BUSINESS ADMINISTRATION

www.klamathcc.edu/busadmin

SERVICE STUDENT SUCCESS

Veterans Services at Klamath Community College (KCC) offers a range of support and resources specifically tailored to meet the needs of active military students, veterans, and their families.

KCC is proud to help active military and veteran students succeed in their educational goals.

Thank you to all who served!



GET STARTED TODAY!



541-880-2389
www.klamathcc.edu/veterans

BUSINESS TECHNOLOGY

The newly revamped Administrative Office Professional (AOP) program reflects the evolving responsibilities of administrative assistants. The AOP program emphasizes software skills, project management, Internet communications and research, meeting and event preparation, customer service and public relations, the abilities to think logically and to demonstrate problem-solving techniques, and the need to successfully interact with a variety of personalities.

www.klamathcc.edu/bus-tech





COMPUTER ENGINEERING TECHNOLOGY

www.klamathcc.edu/cet

The Computer Engineering Technology program is great for students who would like training in information system support and want to transfer to the in computer engineering technology program at Oregon Institute of Technology (OIT).



The Cybersecurity and Networking program is perfect for new students and existing professionals who want technical training in information system support and administration with an emphasis on cybersecurity.

CYBERSECURITY AND NETWORKING

www.klamathcc.edu/cybersecurity