



Klamath Community College

2023 Summer Community Connections

Credit for Prior Learning page 2

Summer Term starts June 26

Fall Term starts September 25



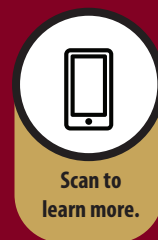
Learning doesn't just happen in the classroom. Learning also happens at work, through certifications or licenses earned for your job. Learning can happen through your experiences pursuing a personal passion or caring for a loved one.

At KCC, we believe in meeting students where they are - including giving them a path to earn college credit for what they have already learned and achieved through credit for prior learning (CPL).

CPL lets you translate demonstrated prior learning into course credit, saving you money and time. Students can earn up to 24 CPL credits towards a one year certificate or up to 48 CPL credits toward a two-year degree. You could save as much as \$6,000 in KCC tuition.

Some examples of the many options for CPL include the Automotive Service Excellence (ASE) Certification toward an AAS Automotive Technology, or Department of Public Safety Standards and Training (DPSST) Exam for an AAS Criminal Justice.

To learn more visit
www.klamathcc.edu/cpl





Welcome! ¡Bienvenidos!

4

KCC Administration

5

Registration

6

Calendar, Tuition & Fees

7

Student Resources

9

Student Life

10

Degrees & Certificates

11

Campus Safety

12

Campus Map

14

Courses A-Z

Use these tools to connect with a Student Success Advisor!

New to
KCC?

register TODAY
in Founders Hall
(Bldg. 9)

Skip the
LINE!

Make an Enrollment
Appointment NOW!



Download the
QLess App



Text 'klamathcc' to:
541-612-3482



Use the Kiosk in
Founders Hall



Website:

kiosk.us1.qless.com/kiosk/app/home/21243

www.klamathcc.edu | Summer 2023 | 541-882-3521

3

KCC Mission

Klamath Community College provides accessible, quality education and services in response to the diverse needs of the student, business, and community.

The College supports student success in workforce training, academic transfer, foundational skills development, and community education.

Accreditation

Klamath Community College is accredited by the Northwest Commission on Colleges and Universities.

Equal Opportunity Policy

It shall be the policy of the Klamath Community College District to affirm the rights of all individuals to equal education, activities, facilities, and employment without regard to age, sex, disability, national origin, race, marital status, religion, or sexual orientation in accordance with federal and state laws. Klamath Community College complies with Titles VI and VII of the Civil Rights Act of 1964, Title IX of the Educational Amendments of 1972, and Section 504 of the Rehabilitation Act of 1973, and Title II of the Americans with Disabilities Act of 1990, and any amendments thereto.

Inquiries or grievances concerning the application of these laws and regulations to the College may be directed to the Klamath Community College's Executive Director of Human Resources and General Counsel at 7390 South 6th St., Klamath Falls, OR 97603 or at 541-882-3521 or to the Office of Civil Rights, U.S. Department of Education, 915 Second Ave. Room 3310, Seattle, WA 98174-1099.

Accommodations

If a person with a disability needs assistance in order to attend or participate in a college event or meeting, please notify the Disability Specialist at 541-882-3521 within 3 days of the meeting.



A note from a KCC partner



I am thrilled that KCC has added the Cosmetology programs to its college offerings. The term Cosmetology is the industry terminology that represents the professional careers of Hair stylist, Esthetician and Nail Technician. While the professions are well recognized, the technical training required to become licensed in the industry is not widely known.

Cosmetology is a professional career with technical advanced training.

The cosmetology curriculum includes chemistry, anatomy, and geometry.

A hairstylist is an architect sculpting the hair, while an esthetician can diagnose skin disorders and provide a home care routine to improve results.

Understanding the chemistry of the art is a talent, from the hairstylist who calculates the exact color formulation to the nail professional who sculpts the nail with precision, the industry requires sophisticated training. Sanitation is also critical to maintain the health and safety of clients and is a vital part of the education.

Work-life balance and earning potential.

Careers in Cosmetology are entrepreneurial and provide one of the best work-life balances as professionals are able to manage their schedule and only book appointments when they are available. Based on an International Spa Association survey, 50% of spa professionals work full-time at 30 hours a week and earn on average \$42/hour. A complimentary study in the salon industry by The Qnity Institute illustrates that salon professionals on average work full-time at 28 hours per week and make \$38/hour.

Why KCC is very different than traditional beauty schools.

As a college, KCC has the ability to elevate the Cosmetology programs to offer multiple opportunities in education. Individuals entering the cosmetology industry are entrepreneurial and must learn to build their business, manage their financials and market their skills. KCC has created an associate degree program that incorporates the cosmetology program along with the necessary accounting, business and marketing skills to accomplish that. This program will provide students with elevated skills to be successful.

Consider a Cosmetology career today!

Beauty touches everyone's life and we are dependent on the professionals who provide services. The work-life balance and earning potential can be defined by each individual. Consider the increasing eye lash extension business and realize that while the service might cost \$300 – the cost for the professional might only be \$10 – so do the math and see that the career can be exceptionally rewarding. This is just one example – yet you can be creative – have fun and change lives – so why not choose a career in beauty?

Lynelle Lynch
CEO

Bellus Academy

KCC Administration

KCC Board of Education

Zone 1: Kate Marquez

Zone 2: Kenneth DeCrans

Zone 3: Rhoda Keown

Zone 4: Dave Jensen

Zone 5: Linda Dill

Zone 6: Helen Petersen

Zone 7: Vacant

Student Board Member

(non-voting)

Carissa Catterall

ASKCC President



Dr. Roberto Gutierrez
President



Jamie Jennings
VP of Academic Affairs



Geoff LaHaie
VP of Administrative Services



Gail Schull
VP of Student Affairs



Charles Massie
Vice President of External Programs



Josh Guest
Executive Director of Human Resources and General Counsel

Registering at KCC Has Never Been Easier!

New students start here.

1

Step 1 - Complete KCC admission form

Available online at www.klamathcc.edu/admissions or in-person inside Founders Hall at 7390 South 6th Street or call 541-882-3521.

2

Step 2 - Apply for Financial Aid

Students who wish to receive Federal Financial Aid should apply at studentaid.gov. Apply as early as possible.

3

Step 3 - Meet with Student Services

Meet with KCC Student Services online or in-person to determine if you need a placement test and to register for classes inside Founders Hall at 7390 South 6th Street or call 541-882-3521.

4

Step 4 - Purchase textbooks

Textbooks may be purchased at the KCC Bookstore and at bookstore.klamathcc.edu. If financial aid is complete, students can charge books to their student account at the bookstore. For more information please visit bookstore.klamathcc.edu.

Current students start here.

1

Step 1 - Meet with your academic advisor.

2

Step 2 - Register for classes

Save time by using web registration on mykcc.klamathcc.edu.

3

Step 3 - File a FAFSA On the Web

Students must file a Free Application for Federal Student Aid (FAFSA) every year for the upcoming academic year (summer-spring terms) if they wish to receive financial aid. Check your online account to make sure everything is ready to go for the upcoming term.

4

Step 4 - Purchase textbooks

Textbooks may be purchased at the KCC Bookstore and at bookstore.klamathcc.edu. If financial aid is complete, students can charge books to their student account at the bookstore. For more information please visit bookstore.klamathcc.edu.



Pay for it like a BO\$\$
There are a number of ways to
finance your education.

- FILE YOUR FAFSA EARLY! Open in October.
- Ask about Pell Grants. 60% of KCC students qualify for Pell!
- Look into Oregon Promise. You may qualify for two years of tuition - FREE!
- Transferring to Oregon Tech? Join the Badger to Owl Connection and save thousands.
- Take 15 or more credits through our 15 to Finish incentive program and earn three free lecture credits.

For more information about financing your KCC experience, call 541-880-2352, see a financial aid representative in Founders Hall, or visit www.klamathcc.edu/financial-aid TODAY!

Calendar, Tuition & Fees

Academic Calendar

Summer Term 2023

Register Now! Orientation is now mandatory for new students. All degree-seeking students must speak with an academic advisor before registering for classes.

June 26	Classes Begin
June 30	Last Day to Drop or Add Course (instructor permission required after classes begin) Last Day to Request a Refund
June 19	No School - Juneteenth
July 4	No School - Independence Day
Aug. 4	Last Day to Withdraw with a 'W' - 9-Week Term
Aug. 18	Last Day to Withdraw with a 'W' - 11-Week Term
Aug. 21-25	Final Exams- 9-Week Term
Sept. 4-8	Final Exams- 11-Week Term
Aug. 25	Last Day of Term - 9-Week Term
Sept. 8	Last Day of Term - 11-Week Term

Fall Term 2023

Register Now! Orientation is now mandatory for new students. All degree-seeking students must speak with an academic advisor before registering for classes.

Sept. 25	Classes Begin
Sept. 29	Last Day to Drop or Add Course (instructor permission required after classes begin) Last Day to Request a Refund
Nov. 10	No School - Veterans Day (Observed)
Nov. 23-24	No School - Thanksgiving
Dec. 22, 25	No School - Christmas
Jan. 1	No School - New Year's Day
Nov. 17	Last Day to Withdraw with a 'W'
Dec. 4-8	Final Exams
Dec. 8	Last Day of Term

Tuition and Funding

TUITION & FEES

Current tuition information can be found at www.klamathcc.edu/tuition

SCHOLARSHIPS

General scholarship information can be found at www.klamathcc.edu/scholarships

Foundation scholarships can be found at www.klamathcc.edu/foundation-scholarships

OTHER FUNDING

Emergency funds
www.klamathcc.edu/foundation

STEP/SNAP/TANF JOBS
www.klamathcc.edu/step

Payment

Tuition and fees are due by the first day of class; accounts are considered past due after this date. Students must pay their account in full or have a completed financial aid application filed by this date. The College accepts all traditional forms of payment, including cash (U.S. dollars only), checks, MasterCard, VISA, Discover, debit cards, and payments online. Third-party payment arrangements are also acceptable, which include agency or company payment authorizations, financial aid, scholarships, and veterans educational benefits. It is the student's responsibility to ensure that written third-party authorization is received by the College. Installment plans are available for students with a minimum balance of at least \$275. For more information on setting up an installment agreement and making payments, please contact the cashier at 541-880-2237.

A late fee of \$25 may be assessed on student accounts that are past due. This fee may be assessed up to three times during the term. Failure to make timely payments or to make satisfactory payment arrangements by the due date may result in late fees and/or administrative withdrawal from classes. Prior term unpaid balances must be paid in full before registering for another term. Other college services such as grades, transcripts, diplomas, registration privileges, or any combination thereof may be withheld if students do not make satisfactory arrangements to meet their financial obligation to the college. KCC and Oregon Tech provide concurrent notification to one another of student holds.

KCC Bookstore

Textbooks for Klamath Community College courses are available at the KCC Bookstore. The bookstore stocks new and used textbooks, school and art supplies, KCC clothing and logo items, graduation regalia and an assortment of food and beverages. The bookstore is located in Founders Hall.

During specific time periods, current KCC students receiving federal financial aid may be eligible to charge textbooks and school supplies to their student accounts. At the end of the term, students may sell books back to the bookstore.

For more information, visit bookstore.klamathcc.edu.

KCC Career Services Center

The KCC Career Services Center, located in Building 4, Room 415, is your one-stop-shop for help with career counseling, advising, and coaching, including individualized assistance and/or workshops for the following topics:

- Resume and cover letter writing
- Filling out applications
- Behavioral and traditional interviewing
- Dressing for interviews, office visits, and work
- Job search techniques
- Networking with employers
- Mock interviews
- Job fairs
- Labor market research/career exploration assessments to find a career based on your interests

Community Resource Benefits Navigator

The Community Resource Benefits Navigator will coordinate a wide range of resources, assist students in evaluating and addressing their specific barriers, and ensure students are aware of all the available resources and benefits, including:

- Referring students to on-campus resources.
- Referring students to external partners.
- Connecting students to local, state, and federal benefits and resources by:
 - Determining eligibility,
 - Assisting students with the application process,
 - Ensuring students maximize available resources and benefits.

Contact the Community Resource Benefit Navigator at kcc.benefits.navigator@klamathcc.edu

Accessibility Support Services

Accessibility Support Services are available for students with documented disabilities. Students can meet with the Accessibility coordinator to help set up accommodations for courses. Accommodations can include extra time on tests, a dedicated note-taker, and more.

Accessibility Support Services can be contacted at kcc.disability@klamathcc.edu

The Learning Resource Center (LRC)

The Learning Resource Center (LRC), encompassing the Library, Testing Center and Tutoring Center, is the gateway to academic success. Located in Founders Hall, the LRC supports students, staff, faculty, and community learners by creating a welcoming atmosphere where no question is too big or too small. The LRC provides study space, access to research resources (both print and electronic), tutoring, testing, computers, printing, copying, scanning, and much more! KCC students have access to the SAGE Library System, a collection of over 75 libraries in Eastern Oregon. Many of the LRC's resources can be accessed off campus.

Military Services

KCC strives to embrace America's military service members, veterans, and spouses as students and to ensure their success on campus.

KCC's Campus Veterans Resource Center staff can help you work out your education needs whether you are looking to pursue traditional training or degrees, attain a Community College of the Air Force degree or looking to take online courses through General Education Mobile.

For more information, call 541- 880-2214 or email veterans@klamathcc.edu.

JOBS

JOBS services are available for SNAP recipients of all ages who are seeking a job or career education that will allow them to seek, or return to, work in less than one year.

Services available:

- Career coaching
- GED/ESL
- Academic skill building
- Career Pathways training
- Internships / work experience
- Connection to resources and scholarships (for eligible participants)

Contact the JOBS Coordinator at 541-880-2381 or ruizm@klamathcc.edu



KCC Students Ride Free

Show your KCC student ID and BTS will do the driving for you.

Do you need a lift to campus? Just flash a valid KCC student ID card and Basin Transit (BTS) will bring you in from anywhere on its routes! Buses stop hourly on campus at :55 on the hour from 6:55 AM to 6:55 PM.

Student Resources

STEP

STEP services are available for expecting or parenting students ages 16 to 24 who need help in seeking, or continuing with, job or career education. Services available:

- Career coaching
- Academic skill building
- Career Pathways training
- Internships / work experience
- KCC tuition, books, and fee support
- Connection to resources
- Emergency child care
- Diapers
- Formula
- Cribs
- Car seats

Contact the STEP Coordinator at 541-880-2343 or scobee@klamathcc.edu

Technology Help Desk

Need help with printing, installing Office365, or other technology? Visit the Technology Help Desk in the Health Sciences Building (Bldg 6) room 6134.

Phone: 541-880-2226

Email: is.helpdesk@klamathcc.edu

Hours:

Monday - Friday: 7 AM-8 PM

Saturday: 10 AM-2 PM

Testing Center

The Testing Center provides testing/proctoring services for a variety of assessments to KCC students, the extended community, other partnering colleges, and local/state licensing agencies. For more information, call 541-880-2334. The Testing Center is located in Building 3.

TRiO Student Support Services

TRiO Student Support Services is a free program funded by a federal grant. TRiO accepts up to 140 students and follows that cohort from program entry to graduation and/or transfer. Students receive extra academic advising, transfer assistance, tutoring, career and learning style assessment, free visits to universities, and several cultural events each year.

TRiO is located in Founders Hall. For more information, or to request an application, call 541-880-2289 or visit www.klamathcc.edu/trio-sss

Tutoring Services

IN-PERSON TUTORING

Tutors are available to help students in a variety of subjects, including math, chemistry, physics, biology, writing, computers, English, Spanish, and more! This service is free to current students, upstairs in Founders Hall.

ANSWERLAND AND ETUTORING.ORG

Students have free 24/7 access to reference help and online tutoring help through the college's online learning platform, Canvas.

KCC Career Services Center

Scan me now



Need help choosing a major?

We can help you identify your skills, interests, and values using a variety of online assessments and help you decide which majors and career paths might be the best for you.

Need a full- or part-time job while you attend school?

The Career Services Center is here to help you find and apply for off-campus jobs, help you write an effective resumé and cover letter, and help you hone your interviewing skills.

Struggling to pay your rent or energy bill?

Klamath & Lake Community Action Services (KLCAS) may be able to help. A KLCAS representative is available to meet with students at the Career Services Center twice a month.

Want to browse employment opportunities?

The KCC career coach site allows students to find work opportunities, build their resumé, and take skills assessments. klamathcc.emsicc.com/

or visit www.klamathcc.edu/csc to learn more about the KCC Career Services Center

Hours

7:30 AM - 5 PM

Monday through Friday
Building 4, room 415

Let us
work
to help
you
find
your
new
career



KLAMATH
Community College
Career Services Center

Contact

541-880-2354

kcccareercenter@klamathcc.edu

Get Involved and Stay Connected!

Office of Student Life

Student Life promotes the development and success of our students by providing opportunities for meaningful, diverse connections; personal and professional leadership and growth; and community engagement and service.

Get connected! Stop by the Student Life Center to find ways to enhance your college experience at KCC and develop your skills outside the classroom.

For more information or to get involved, contact Student Life at 541-880-2355 or via email at studentlife@klamathcc.edu.

Experience Beyond the Classroom

COMMUNITY SERVICE & VOLUNTEERISM

The Volunteer Badgers program offers opportunities for students and employees to give back to the Klamath Falls community. From adopting a section of the OC&E Trail to volunteering at local events, Volunteer Badgers host one service day a month and are working to expand the number and type of projects available.

Each term, the Office of Student Life hosts a volunteer fair to facilitate meaningful service and community engagement in partnership with community-based organizations. Check out our calendar for event dates/times: www.klamathcc.edu/events.

DIVERSITY

The Office of Student Life celebrates the diversity of experiences and backgrounds found within the KCC community. To foster connection and growth among students and staff, Student Life hosts a wide variety of diversity-based activities and events including Dia de los Muertos, Mardi Gras, and more.

INTRAMURALS & SPORTS

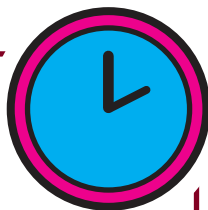
Being a student is more than sitting in a classroom. Student Life aims to get students moving and practice wellness in their everyday lives. Students are invited to use the Wellness Center in Building 4 after a short orientation.

LEADERSHIP

The Office of Student Life hosts workshops to encourage student learning beyond the classroom. These workshops are free and open to students at any level in their leadership journey. Potential topics include effective communication, resumé review, informed decision-making, emotional intelligence, and more.

KCC Standard Hours:

Campus offices are open Monday through Friday between the hours of 8 AM and 5 PM, except on national holidays.



Associated Students of
KLAMATH
Community College

Get Involved

ASSOCIATED STUDENTS OF KLAMATH COMMUNITY COLLEGE (ASKCC)

ASKCC advocates for the student body at local, state, and federal levels, creating opportunities for community engagement and providing access to resources based on individual and collective student needs.

Advocacy • Service • Knowledge • Community • Connection

ASKCC OFFICERS

ASKCC officers are selected each year during the spring term and work to advocate for the student body each academic year (summer term through spring). Officers are available for support or a listening ear during their office hours each week in the Office of Student Life located in Building 4.

If you are interested in applying for an officer position, stop by the Office of Student Life or email studentlife@klamathcc.edu.

Student Clubs and Organizations

WHY SHOULD YOU GET INVOLVED?

Have you ever been passionate to represent a culture or hobby? Joining a club would be a perfect fit! At KCC, student clubs and organizations are the perfect environment to take ownership of your college experience with a fun, out of the classroom community. Students who are involved in class will tell you that clubs provide leadership opportunities, a greater sense of belonging, and a positive outlet for the stress that college can bring.

CAMPUS CLUBS CURRENTLY RECOGNIZED AT KCC:

- Alpha Gamma Nu Nursing Society.
- Criminal Justice Life Club. Advisor: Jim Gravely.
- Indigenous People Club. Advisor: Jo Cochran.
- KCC Gaming Club. Advisor: Kurt Liedtke.
- Latino Club. Advisor: Oscar Herrera.
- Phi Theta Kappa Honors Society (PTK). Advisor: Michelle Runyan.
- Rainbow Club. Advisor: Michael West.
- Science Club. Advisor: Eleazar Gutierrez.
- Technology & Engineering Club. Advisor: Pete Brandsness.

DON'T SEE A CLUB YOU WANT TO JOIN? CREATE A NEW CLUB!

It's simple to start a new club on campus! If you have an idea for a club that you would like to see at KCC, contact the Director of Student Life, at studentlife@klamathcc.edu or 541-880-2321.

Klamath Community College Degrees and Certificates

Accounting

Associate of Applied Science

- Accounting AAS

One Year Certificate

- Accounting Certificate

Less-Than-One-Year Certificate

- Accounting – Bookkeeping Career Pathway Certificate

Agriculture Science

Associate of Applied Science

- Agriculture Science AAS

Less-Than-One-Year Certificate

- Farm and Ranch Manager Career Pathway Certificate

Associate of Arts Transfer (AAT)

- AAT – English Literature

Associate of Arts, Oregon Transfer (AAOT)

- AAOT
- AAOT – Exercise Science Emphasis
- AAOT – Math Emphasis

Associate of General Studies (AGS)

- AGS
- AGS – Psychology

Associate of Science (AS)

- AS

Associate of Science Transfer (AST)

- AST – Biology
- AST – Business

Automotive Technology

Associate of Applied Science

- Automotive Technology AAS

Less-Than-One-Year Certificate

- Automotive Technician Electrical/Electronic Specialist Career Pathway Certificate

Aviation

Associate of Applied Science

- Aviation Airplane AAS
- Aviation Helicopter AAS

Business Administration

Associate of Applied Science

- Business Administration AAS (Emphasis in Business Management or Marketing)

One Year Certificate

- Business Administration Business Management Certificate
- Business Administration Marketing and Sales Certificate

Less-Than-One-Year Certificate

- Business Administration First-Line Supervisor Fundamentals Career Pathway Certificate

Business Technology

Associate of Applied Science

- Business Technology Administrative Office Professional AAS

One Year Certificate

- Business Technology Administrative Office Professional Certificate

Less-Than-One-Year Certificate

- Business Technology Administrative Office Professional Office Support Specialist Career Pathway Certificate

Computer Engineering Technology

Associate of Applied Science

- Computer Engineering Technology AAS

One Year Certificate

- Computer Support Technician Certificate

Less-Than-One-Year Certificate

- Computer Support Technician Career Pathway Certificate

Criminal Justice

Associate of Applied Science

- Criminal Justice AAS

One Year Certificate

- Addiction Studies Certificate

- Criminal Justice Certificate

Less-Than-One-Year Certificate

- Addiction Studies Career Pathway Certificate

Cybersecurity and Networking

Associate of Applied Science

- Cybersecurity and Networking AAS

Diesel Technology

Associate of Applied Science

Diesel Technology AAS

Less-Than-One-Year Certificate

- Diesel Technician Electrical/Electronic Specialist Career Pathway Certificate

- Professional Truck Driver Career Pathway Certificate

Digital Media Design

Associate of Applied Science

- Digital Media Design AAS

One Year Certificate

- Digital Media Design Multimedia Design Certificate

- Digital Media Design Web Design Certificate

Less-Than-One-Year Certificate

- Digital Media Design Multimedia Design Career Pathway Certificate

- Digital Media Design Web Design Career Pathway Certificate

Education

Associate of Applied Science

- Early Childhood Educator Emphasis AAS
- Education – Paraeducator Emphasis AAS

One Year Certificate

- Early Childhood Educator Certificate

- Education Paraeducator Certificate

Less-Than-One-Year Certificate

- Early Childhood Education Career Pathway Certificate

- Early Childhood Education Career Pathway Certificate (Spanish)

- Education Paraeducator Career Pathway Certificate

Emergency Response and Operations

Associate of Applied Science

- Emergency Response and Operations AAS

One Year Certificate

- Criminal Justice Certificate – ERO

- Emergency Medical Technician Certificate

- Structural Fire Science Certificate

- Wildland Fire Science Certificate

Less-Than-One-Year Certificate

- Criminal Justice Career Pathway Certificate

- Emergency Medical Technician Career Pathway Certificate

- Structural Fire Science Career Pathway Certificate

- Wildland Fire Science Career Pathway Certificate

Health Services

Associate of Applied Science

- Health Information Management AAS

One Year Certificate

- Certified Coding Specialist Certificate

Less-Than-One-Year Certificate

- Electronic Health Record Career Pathway Certificate

- Medical Administrative Assistant Career Pathway Certificate

Laboratory Technician

Associate of Applied Science

- Laboratory Technician AAS

One Year Certificate

- Laboratory Technician Certificate

Less-Than-One-Year Certificate

- Biological and Biotechnology Laboratory Technician Career Pathway Certificate

- Medical and Clinical Laboratory Technician Career Pathway Certificate

Manufacturing Engineering Technology

Associate of Applied Science

- Manufacturing Engineering Technology AAS

One Year Certificate

- Manufacturing Engineering Technologist Certificate

Less-Than-One-Year Certificate

- Computer Aided Design Career Pathway Certificate

- Mechanical Design Solid Modeling Career Pathway Certificate

Nursing

Associate of Applied Science

- Nursing AAS

One Year Certificate

- Practical Nurse Certificate

Welding

One Year Certificate

- Welding Certificate

Less-Than-One-Year Certificate

- Welding – Gas Metal Arc/Wire Feed Welding Career Pathway Certificate

- Welding – Shield Metal Arc/Stick Welding Career Pathway Certificate

- Welding – Tig/Aluminum Stainless Steel Flat Welding Career Pathway Certificate





The Campus Safety staff is committed to promoting a safe and secure campus and protecting our college community. All members of the college can assist in making Klamath Community College a safe environment. We need your eyes and ears open to help keep our campus safe. Please report any suspicious activity to Campus Safety.

CONTACT INFORMATION

Emergency call 911.

Campus Safety can be contacted at 541-880-2314.

You can contact Campus Safety via email at safety@klamathcc.edu.

CRIME PREVENTION TIPS

- Always lock your car.
- Park in a lighted area at night.
- Try to travel in groups.
- Be aware of blue-light emergency phones.
- Walk with your keys in hand.
- Look in your backseat before entering your car.
- When possible, walk in a group.
- Carry your purse or backpack close to your body.
- Never accept a ride from a stranger.
- Let friends and/or family know of your schedule.
- In case of an emergency, CALL 911!

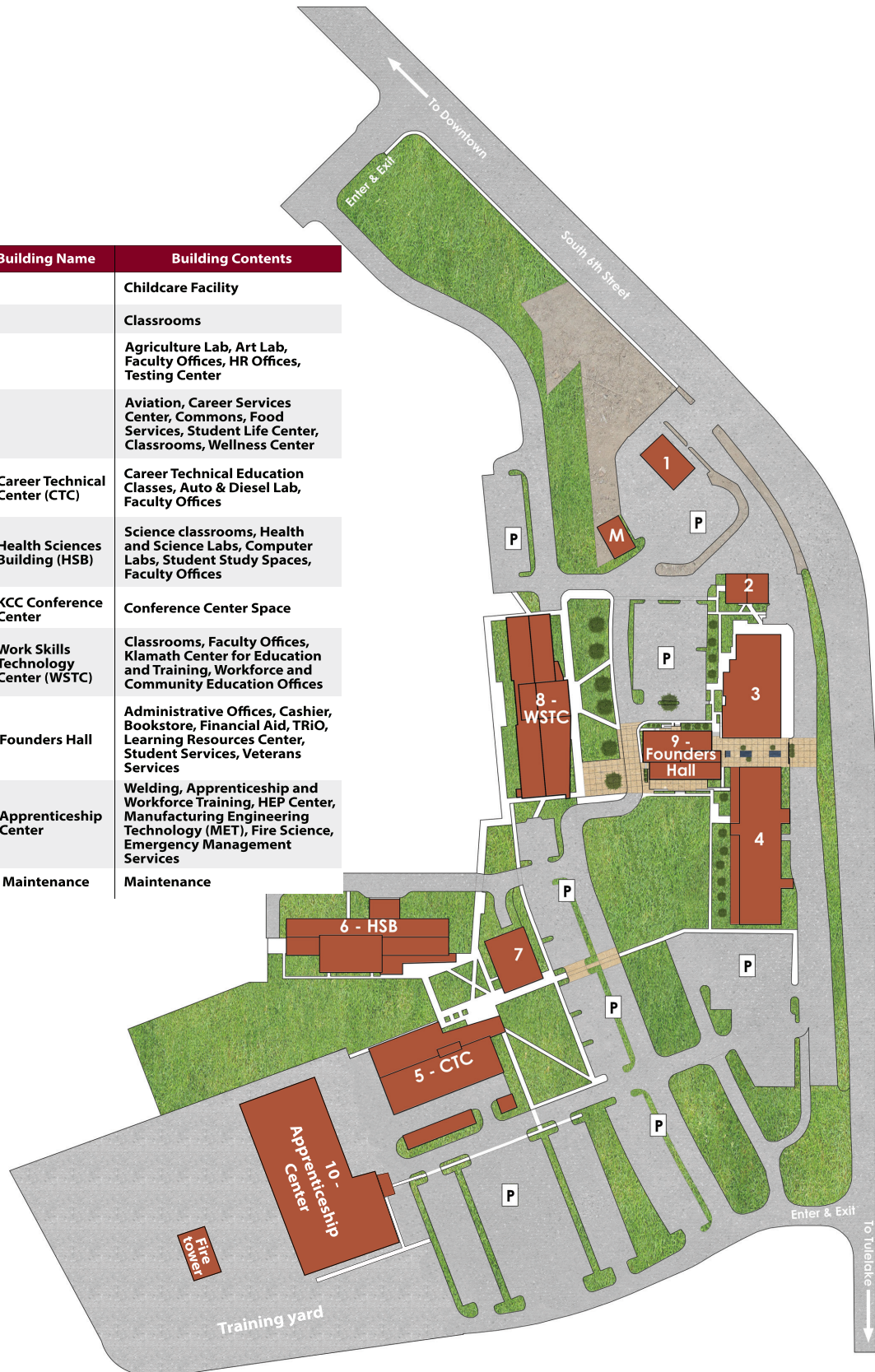
Klamath Community College Non-Discrimination and Equal Opportunity Policy

Klamath Community College is an equal opportunity educator and employer. It shall be the policy of the Klamath Community College District to affirm the rights of all individuals to equal education, activities, facilities, and employment without regard to age, sex, disability, national origin, race, color, marital status, religion, or sexual orientation in accordance with federal and state laws. Klamath Community College complies with Titles VI and VII of the Civil Rights Act of 1964, Title IX of the Educational Amendments of 1972, and Section 504 of the Rehabilitation Act of 1973, and Title II of the Americans with Disabilities Act of 1990, and any amendments thereto.

Inquiries or grievances concerning the application of these laws and regulations to the College may be directed to the Klamath Community College's Executive Director of Human Resources and General Counsel at 7390 South 6th St., Klamath Falls, OR 97603 or at 541-882-3521; or to the Office of Civil Rights, U.S. Department of Education, 915 Second Ave. Room 3310, Seattle, WA 98174-1099

Campus Map

Building #	Building Name	Building Contents
Building 1		Childcare Facility
Building 2		Classrooms
Building 3		Agriculture Lab, Art Lab, Faculty Offices, HR Offices, Testing Center
Building 4		Aviation, Career Services Center, Commons, Food Services, Student Life Center, Classrooms, Wellness Center
Building 5	Career Technical Center (CTC)	Career Technical Education Classes, Auto & Diesel Lab, Faculty Offices
Building 6	Health Sciences Building (HSB)	Science classrooms, Health and Science Labs, Computer Labs, Student Study Spaces, Faculty Offices
Building 7	KCC Conference Center	Conference Center Space
Building 8	Work Skills Technology Center (WSTC)	Classrooms, Faculty Offices, Klamath Center for Education and Training, Workforce and Community Education Offices
Building 9	Founders Hall	Administrative Offices, Cashier, Bookstore, Financial Aid, TRiO, Learning Resources Center, Student Services, Veterans Services
Building 10	Apprenticeship Center	Welding, Apprenticeship and Workforce Training, HEP Center, Manufacturing Engineering Technology (MET), Fire Science, Emergency Management Services
Building M	Maintenance	Maintenance



Course Updates



Common Course Numbering

In February 2023 the Oregon Higher Education Coordinating Commission (HECC) approved a set of 10 commonly numbered courses. KCC currently provides nine of these courses. These courses are standardized in the course title, number, learning outcomes, descriptions, subject code, and credits. The courses are intended to help students keep credit when they transfer from a community college to a four-year university. This saves students time and money by not having to re-take courses. The change benefits students who transfer between any public institution in Oregon.

What does that mean for you? It means that when you see a course code ending in the letter 'Z' you are looking at a common course, so it will transfer with no loss of credit between any of Oregon's public universities or community colleges. Be on the lookout for these new courses in the following pages and online at classes.klamathcc.edu.

KCC Common Courses:

- COM 111Z Public Speaking
- COM 218Z Interpersonal Communication
- MTH 105Z Math in Society
- MTH 111Z Precalculus I: Functions
- MTH 112Z Precalculus II: Trigonometry
- STA 243Z Elementary Statistics I
- WRI 121Z Composition I
- WRI 122Z Composition II
- WRI 227Z Technical Writing

Learn more about Common Course Numbering (HECC website)



Course codes ending with 'M'

Have you ever looked at the course schedule and wondered why some course codes end with 'M'? You are not alone. Courses that end with 'M' are different from other courses. 'M' classes are always worth 5 credits, and they cover the same material as other courses with the same title and code. This extra credit hour means more coursework for the same material. There are no extra fees for 'M' classes, but they do cost more in tuition since tuition is charged per credit.

KCC's 'M' courses are intended for our students in the military, but any current student can take them. However, before signing up for an 'M' course, make sure to talk to your advisors since the credit difference may affect your financial aid or degree plan.

Courses ending with a 'Z' in the course code adhere to Common Course Numbering (CCN) for transfer as approved by the Higher Education Coordinating Commission (HECC).

Art

ART 116 Basic Design: 2-D Color

Studio course introducing 2-D color foundations centered on creative problem solving. Establishes critical skills and personal artistic vision. Investigates a broad range of materials, techniques and projects to explore color design concepts with reference to historical and contemporary perspectives.

ART 213 Modern Art History - Art Since 1945

World War II ended the supremacy of Europe in the visual art world and focused attention on America. Course examines and analyzes art since 1945 to explore the ideas behind it, reveal our culture and values, and to gain a greater understanding and appreciation of contemporary art. Recommended: WRI 121 placement.

ART 265 Art for Teachers

Students will gain experience with a variety of art materials appropriate for use in the classroom. This course addresses the challenge of learning the "how-to" of art while preparing to teach the same to children.

Aviation

AVS 111F Private Pilot I Flight - Helicopter

Flight segment of AVS 111G. Corequisite: AVS 111G.

AVS 111G Private Pilot I: Helicopter

This course teaches the basic knowledge and techniques required to achieve solo helicopter flight as part of achieving your FAA Private Pilot Rotorcraft - Helicopter Certificate. Prerequisites: FAA Class II Medical, Duty Weight <240 lbs. Corequisite: AVS 111F.

Biology

BIO 101 Biology I

A laboratory science course designed for non-biology majors. The first term of a three-term sequence. Includes introduction to science, biochemistry, metabolism, the cell, molecular biology and reproduction. Recommended: Completion of CAS 133. Prerequisites: MTH 070 or MTH 095 or MTH 111 or placement into MTH 095 or MTH 111 and WRI 095 or WRI 121 or placement into WRI 121. Corequisite: BIO 101L.

BIO 101L Bio I Lab

Laboratory activities relating to BIO 101. Corequisite: BIO 101.

BIO 112 Integrated Chemistry and Cell Biology for Health Occupations

Introduces basic concepts of matter, atoms, compounds, intermolecular forces, solutions, pH, biomolecules, cell chemistry, cell structure and function, cell reproduction, and genetics. Concepts covered are applied to health-related problems. Recommended: MTH 070 or MTH 095 or MTH 111 or placement into MTH 070. Corequisite: BIO 112L.

BIO 112L Integrated Chemistry and Cell Biology for Health Occupations Lab

Laboratory activities relating to BIO 112. Corequisite: BIO 112.

Business

BUS 101 Intro to Business

Survey course exploring historical, social, political, economic, and legal environments of business. Interrelationships of the functional areas of management, finance, marketing, accounting, and international business are introduced. The class will stress fundamental concepts, terminology, ethics, and career opportunities.

BUS 111 Intro to Accounting

Presents double-entry accounting as related to service businesses. Provides an understanding of the accounting cycle, debits and credits, and financial statements for these businesses. Also introduces journalizing and posting to the general ledger.

BUS 124 Leadership Skills in Action

This course introduces new and experienced students to leadership concepts in relation to becoming and functioning as a leader. Students will have opportunities to explore and reflect upon personal leadership styles and strengths, and enhance their leadership abilities through the examination of theory and application of practical information and skills. The course combines experiential components with classroom discussion, reading, and applied learning activities.

BUS 150 Intro to Entrepreneurship

Students will learn the basics of entrepreneurship, including the personal aspects of entrepreneurs, opportunity identification, and organizational structuring. This course will introduce information on becoming an entrepreneur, selecting a type of ownership, developing a business plan, marketing a business, hiring and managing a staff, and financing, protecting, and insuring the small business.

BUS 203 Intro to International Business

Explores the processes of international trade and examines the functional, economic, political, and financial aspects of international business. Cultural differences, human resource management techniques, and corporate strategy for international markets are addressed. Provides a panorama of key international business activities and issues within a framework for further study in international business.

BUS 211 Principles of Accounting I

Introduces financial accounting theory, including the accounting cycle, analysis and recording of transactions, and reporting financial information in accordance with generally accepted accounting principles. Prerequisite: BUS 111 with a grade of "C" or better.

BUS 214 Business Communication

This course covers concepts and skills necessary to communicate in today's constantly changing business environment. Students will learn how to create a wide range of business documents and oral presentations, addressing the needs of diverse audiences, and ethical implications of the communication process. Instructor approval may be obtained if a student has not met the WRI 121 prerequisite. Prerequisites: CAS 133 and WRI 121.

BUS 218 Personal Finance

Studies the role of the consumer in the economy and addresses problems of financing individual and family needs, including budgeting, banking relationships, charge accounts, installment buying, insurance, wills, real estate investing, and personal taxes. Recommended: Placement into MTH 060 or MTH 070.

BUS 250 Small Business Management

Practical analysis of principles of small business management and owner operated businesses are covered. Explores management methods, financial support, marketing management, common administration and control, analysis of trends, and professional practices. Students will be exposed to the critical elements of a business plan. Prerequisites: BUS 111 or BUS 211 and CAS 133 and CAS 133L.

BUS 280 Coop Work Experience: Business

On-the-job, paid or volunteer, experiences which allow for the application and development of knowledge, skills, and attitudes learned through the on-campus program so that the student can learn various functional aspects of the industry. Cooperative work experience is offered for variable credit based on the student's objectives. Instructor permission is required prior to registering and the student must locate a job site for the course. Recommended: Completion of TEX 280 or co-enrollment during same term.

BUS 285 Human Relations in Organizations

This course covers human interactions within organizations, with a particular focus on communication and small group dynamics. Human relations techniques that build better employer/employee relationships are explored, and interpersonal relations both on the job and in everyday life are addressed.

Computer Applications

CAS 133 Intro to Computing Skills

Provides hands-on experience with Microsoft Office software fundamentals, including Word, PowerPoint, and Excel. Includes concepts of computer operations and literacy as well as insight into the broad impact of computers on today's society. Students should have a basic working knowledge of general computer use prior to enrollment. Recommended: WRI 095 and keyboarding by touch. Corequisite: CAS 133L.

CAS 133L Intro to Computing Skills Lab

Laboratory activities relating to CAS 133. Corequisite: CAS 133.

CAS 170 Spreadsheets

This in-depth, hands-on course will present beginning and intermediate spreadsheet concepts. Students will use Excel efficiently to design and create accurate professional worksheets for use in business. Recommended: CAS 133 and MTH 020 or MTH 070 or MTH 095 or MTH 111 or placement into MTH 070.

College Survival and Success

CGS 100 College Survival & Success

The purpose of this course is to help the student become a more effective learner. This course will cover college terms and information, class choice, degree requirements, etc. Helps new or returning students make personal and social adjustments for college success.

Chemistry

CHE 105 General Chemistry II

Includes stoichiometry, gases, oxidation reduction, acid/base concepts, equilibrium, and physical and chemical properties of solutions. Prerequisite: CHE 104. Corequisite: CHE 105L.

CHE 105L General Chemistry II Lab

Laboratory activities relating to CHE 105. Corequisite: CHE 105.

Computer Information Systems

CIS 206 Intro to Information Technology

This course introduces the key components found in modern business information systems, including both the major hardware components of today's network and primary categories of software applications used to support knowledge workers. Data resource management concepts are developed to provide the student with a high level picture of how the elements of an information system work together to solve problems and support business opportunities. Business ethics relating to the use of information systems is explored for local and global firms. Corequisite: CIS 206L.

CIS 206L Intro to Information Technology Lab

Laboratory activities relating to CIS 206. Corequisite: CIS 206.

CIS 280 Coop Wk Exp: Computer Technology Engineer

On-the-job, paid or volunteer, experiences which allow for the application and development of knowledge, skills, and attitudes learned through the on-campus program so that the student can learn all aspects of the industry. Cooperative work experience is offered for variable credit based on the student's objectives. Instructor permission is required and the student must locate a job site for the course. Prerequisites: CIS 146 and CIS 152 with a grade of "C" or better.

Criminal Justice

CJA 120 American Criminal Justice System

An overview of the American criminal justice system, examining structure, functions, processes, as well as theoretical perspectives in criminology, including biological, psychological, and sociological explanations. Focuses on law enforcement, criminal courts, corrections, community-based sanctions, and the constitutional frameworks in which they operate.

CJA 226 Dynamics of Juvenile Behavior

Covers the problems of juvenile delinquency and deviant behavior. Reviews the major theories of juvenile delinquency and treatment strategies. Includes discussion of juvenile justice system history, and analyzes current trends and developments. Prerequisite: WRI 121.

CJA 280 Coop Work Experience: Criminal Justice

On-the-job, paid or volunteer, experiences which allow for the application and development of knowledge, skills, and attitudes learned through the on-campus program so that the student can learn all aspects of the industry. Instructor permission is required and the student must locate a job site for the course.

Communications

COM 111M Public Speaking

COMM 111M emphasizes developing communication skills by examining and demonstrating how self-awareness, audience, content, and occasion influence the creation and delivery of speeches and presentations. Prerequisite: WRI 121.

COM 111Z Public Speaking

COMM 111Z emphasizes developing communication skills by examining and demonstrating how self-awareness, audience, content, and occasion influence the creation and delivery of speeches and presentations. Prerequisite: WRI 121.

Cosmetology

COS 102 Oregon Laws and Rules

In this course students will gain knowledge of the laws and rules pertaining to cosmetology established by the Oregon Health Agency. Students will assess the laws and rules as they apply to the field of cosmetology.

COS 104 Salon Management

This course focuses on the understanding of the salon industry, basic business building techniques, professional relationships, salon ownership and salon retailing.

COS 105 Cosmetology Science

Students will gain a basic knowledge of structures and functions of the skin and muscles of the hand and feet, and gain an understanding of chemical elements, bonds, pH and cosmetics used in cosmetology. Students will study the principles of electricity as used in the field of cosmetology.

COS 111 Hair Design Theory I

This class focuses on the beginning background information necessary for Cosmetology students to prepare for Cosmetology clinic/lab sessions and to meet the requirements set forth by the Oregon Board of Cosmetology. Areas to be addressed include hair sculpture, associated tools and their usage and the four basic design forms to complete a woman's hair sculpture, and a men's planer combination form sculpture. Corequisite: COS 111L.

COS 111L Hair Design Theory I Lab

Pre-clinic lab sessions prepare students to meet the requirements set forth by the Oregon Board of Cosmetology. Areas to be addressed include hair design, shampooing, rinsing and conditioning, and haircutting for men and women. Corequisite: COS 111.

COS 112A Hair Design Theory II

This class focuses on the beginning background information necessary for Cosmetology students to prepare for Cosmetology clinic/lab sessions and to meet the requirements set forth by the Oregon Board of Cosmetology. Areas to be addressed include the properties of the scalp, and hair, and both wet and thermal styling. Prerequisite: COS 111. Corequisite: COS 112L.

COS 112B Hair Design Theory II for Barbers

This class focuses on the beginning background information necessary for Cosmetology students to prepare for Cosmetology (Barbering) clinic/lab sessions and to meet the requirements set forth by the Oregon Board of Cosmetology. Areas to be addressed include the properties of the scalp, and hair, and thermal styling. Prerequisite: COS 111. Corequisite: COS 112L.

COS 112L Hair Design Theory II Lab

Pre-Clinic lab sessions prepare students to meet the requirements set forth by the Oregon Board of Cosmetology. Areas to be addressed include hair design, shampooing, rinsing and conditioning, haircutting, and hairstyling. Prerequisite: COS 111. Corequisite: COS 112A or COS 112B.

COS 113 Hair Design Theory III

This class focuses on the beginning background information necessary for Cosmetology students to prepare for Cosmetology clinic/lab sessions and to meet the requirements set forth by the Oregon Board of Cosmetology. Areas to be addressed include basic and advanced perm wrapping patterns and relaxing techniques. Prerequisite: COS 112A. Corequisite: COS 113L.

COS 113L Hair Design Theory III Lab

Pre-Clinic lab sessions prepare students to meet the requirements set forth by the Oregon Board of Cosmetology. Areas to be addressed include hair design, shampooing, rinsing and conditioning, haircutting, hairstyling, and chemical texture services. Prerequisites: COS 112A. Corequisite: COS 113.

COS 114 Hair Design Theory IV

This class focuses on the beginning background information necessary for Cosmetology students to prepare for Cosmetology clinic/lab sessions and to meet the requirements set forth by the Oregon Board of Cosmetology. Areas to be addressed include basic all-over color design and color weaving services. Prerequisite: COS 113. Corequisite: COS 114L.

COS 114L Hair Design Theory IV Lab

Pre-Clinic lab sessions prepare students to meet the requirements set forth by the Oregon Board of Cosmetology. Areas to be addressed include hair design, shampooing, rinsing and conditioning, haircutting, hairstyling, chemical texture services and hair coloring. Prerequisite: COS 113. Corequisite: COS 114.

COS 115C Hair Design Clinical

Clinic-level lab sessions prepare students to meet the requirements set forth by the Oregon Board of Cosmetology. Areas to be addressed include, client relations, infection control, hair design, women's hair styling, shampooing, rinsing and conditioning, haircutting, and hairstyling. Prerequisite: COS 112A.

COS 116C Hair Design Clinical

This course is a continuation of COS 115C. Clinic-level lab sessions prepare students to meet the requirements set forth by the Oregon Board of Cosmetology. Areas to be addressed include client relations, infection control, hair design, women's hair styling, shampooing, rinsing and conditioning, haircutting, hairstyling, chemical texture services, and specialty permanent waves. Prerequisite: COS 113, COS 113L.

COS 117C Hair Design Clinical

This course is a continuation of COS 115C and COS 116C. Clinic-level lab sessions prepare students to meet the requirements set forth by the Oregon Board of Cosmetology. Areas to be addressed include, client relations, infection control, hair design, women's hair styling, shampooing, rinsing and conditioning, haircutting, hairstyling, chemical texture services, specialty permanent waves, and hair coloring. Prerequisite: COS 114.

COS 121 Esthetics Theory

This course focuses on the beginning background information necessary for Esthetics students to prepare for participation in clinic/lab sessions and to meet requirements set forth by the Oregon Board of Cosmetology. Areas addressed include client relations, infection control, physiology and histology of the skin, skin care products, ingredients and selection, skin analysis, basic facials, facial massage, temporary hair removal products and procedures, microdermabrasion, and the world of makeup. Corequisites: COS 121L.

COS 121L Esthetics Theory Lab

These pre-clinic sessions prepare the students to meet the requirements set forth by the Oregon Board of Cosmetology. Areas addressed include client relations, infection control, skin analysis, facials, massage, makeup, temporary hair removal, microdermabrasion, and makeup application. Corequisite: COS 121.

COS 122C Esthetics Clinic II

Clinic-level lab sessions prepare students to meet the requirements set forth by the Oregon Board of Cosmetology. Areas to be addressed include client relations, infection control, skin analysis, facials, massage, makeup, temporary hair removal, and makeup application. Prerequisite: COS 121.

COS 131 Nail Tech Theory

This course focuses on the beginning background information necessary for Nail Technology students to prepare for participation in clinic/lab sessions and to meet requirements set forth by the Oregon Board of Cosmetology. Areas addressed include nail structure and growth, manicuring, pedicuring, nail tips, wraps and nail art. Corequisite: COS 131L.

COS 131L Nail Tech Theory Lab

These pre-clinic sessions prepare the students to meet the requirements set forth by the Oregon Board of Cosmetology. Areas addressed include client relations, infection control, manicures, pedicures, nail enhancements and nail art. Corequisite: COS 131.

COS 132C Nail Tech Clinic II

Clinic-level lab sessions prepare students to meet the requirements set forth by the Oregon Board of Cosmetology. Areas to be addressed include client relations, infection control, manicures, pedicures, nail enhancements and nail art. Prerequisite: COS 131.

COS 141 Barbering Theory

This class focuses on understanding the history of barbering, shaving and beard design, barbering tools and equipment, men's cutting and styling, and theory of basic skin care. Prerequisite: COS 111. Corequisite: COS 141L.

COS 141L Barbering Theory Lab

Pre-Clinic lab sessions prepare students to meet the requirements set forth by the Oregon Board of Cosmetology. Areas to be addressed include analysis of the client's hair, scalp and skin, basic skin care services, and performing basic procedures of sculpture, design, facial hair design, shampoo and conditioning. Prerequisite: COS 111. Corequisite: COS 141.

COS 142C Barbering Clinic II

Clinic-level lab sessions prepare students to meet the requirements set forth by the Oregon Board of Cosmetology. Areas to be addressed include, client relations, infection control, barbering sculpture, hair design, shaving, facial hair design, shampoo and conditioning treatments. Prerequisites: COS 141.

Early Childhood Education

ECE 101 Child, Family, Community

The study of influences on children and families which impact child and family behaviors, values, attitudes, beliefs, and morals. Topics include parenting patterns, cultural, religious and socioeconomic influences, peer, school, media impacts, community ecology, and public policy.

Economics

ECO 201 Principles of Economics: Microeconomics

This course covers principles of rational choice, price determination, market resource allocation, competition, production, market systems, and the role of government in the economy. It also covers individual units in the economy. Recommended: Successful completion of MTH 070 or above and WRI 121 placement.

ECO 202 Principles of Economics: Macroeconomics

This course covers principles of national income, aggregate supply and demand, employment, monetary policy, recession, inflation, and macroeconomic stabilization. Basic principles of international trade and finance are also developed. Recommended: Successful completion of MTH 070 or above and WRI 121 placement.

Education

EDU 113 Instructional Strategies in Language Arts & Reading

Covers various instructional methodologies, practice in theme unit planning, integration of content areas, focus on authors in children's literature, practice and instruction in cooperative groups.

English

ENG 216 Intro Lit for Children and Young Adults

Introduces literature written for children and young adults from genres such as picture books, folktales, comics, novels, poetry, and film. Examines the gendered, political, cultural, and ideological dimensions of the literature, as well as issues of didacticism and censorship. Prerequisite: WRI 121 or concurrent enrollment.

Environmental Science

ENV 170 Environmental Science

Examines major environmental questions facing the world today. Includes population growth, matter and energy resources, ecosystems, pollution, and environment and society. Explores a broad range of environmental issues including sustainability, the interconnection of the economy with ecosystem, short-term versus long-term gains, and the trade-offs in balancing problems and solutions. Recommended: Placement into WRI 095. Corequisite: ENV 170L.

ENV 170L Environmental Science Lab

Laboratory activities relating to ENV 170. Corequisite: ENV 170.

General Education Science

GSC 107 **Physical Science (Astronomy)**

Surveys astronomy to include historical development of the Universe, Earth as a planet, Earth's moon, planets of the Solar System, the Sun, stars, and galaxies. Corequisite: GSC 107L.

GSC 107L **Physical Science Astronomy Lab**

Laboratory activities relating to GSC 107. Corequisite: GSC 107.

Health Information Management

HIM 131 **Medical Coding**

This course is the introduction to developing an understanding of coding and classification systems, particularly ICD-9-CM, ICD-10-CM, and CPT, in order to assign valid diagnostic and procedure codes. Students will analyze current regulations and established guidelines in clinical classification systems; determine the diagnoses and procedures that require coding for acute care (inpatient) and outpatient services; interpret conventions, formats, instructional notations, tables, and definitions of the classification system to select diagnoses, conditions, problems or other reasons for the encounter that require coding to include the procedures/services that require coding; and determine sequence of diagnoses and procedures. Recommended: MDA 101 and co-enrollment or completion of MDA 128 or BIO 231.

HIM 280 **Coop Work Exp: HIM Prof Practicum II**

Provides practicum experience in health information management functions utilizing medical record technologies in a classroom simulation and/or under the direct supervision of facility personnel in local health care facilities.

HIM 292 **EHR Exam Prep**

This class will help prepare students for the examination from National Healthcareer Association (NHA). Students will review core curriculum identified by the National Healthcareer Association for successful application in Billing and Coding Specialist. Tutorials will be used throughout the class to prepare students to complete the practice assessment exam administered to familiarize students with the types of questions and formats encountered on the exams. Completion of the HIM AAS degree or paper work for petition to graduate must be completed before the student is allowed complete the exam(s). The exam will be administered at KCC. The fee per tutorial and one exam attempt is included in course fees. Recommended: Completion of the HIM AAS or the Medical Administrative Assistant Career Pathway Certificate.

HIM 293 **Exam Review- CBS**

This review will help prepare students for the national examination in coding and billing. Students will review core curriculum as essential domains of learning. Practice exams will be administered to familiarize students with the types of questions and formats encountered on these exams. Completion of the HIM AAS degree is required.

Health & Physical Education

HPE 225 **Nutrition**

A study of food and nutrition, including how they relate to health and disease. Students are exposed to basic nutrition including nutrient needs, how nutrients function in the body, energy balance, and diet planning for various medical conditions. Provides an in-depth look at current topics and the American diet.

HPE 295 **Health & Fitness for Life**

Explores the role of wellness, physical fitness, stress, nutrition, and cardiovascular health in promoting an individual's health and well-being. Fitness testing and fitness lab are included.

History

HST 201M **United States History I**

Surveys North American history from the Age of Exploration through the Civil War. Studies include political, social, and economic trends and events. Recommended: Placement scores at WRI 121.

Medical Assisting

MDA 101 **Medical Terminology I**

Covers medical terminology prefixes, suffixes, word roots, and abbreviations by body system.

MDA 102 **Medical Terminology II**

Covers medical terminology prefixes, suffixes, word roots, and abbreviations by body system. Prerequisite: MDA 101 with a grade of "C" or better.

Multimedia & Design

MMT 240 **Digital Photography & Photoshop**

Students will learn the basics of digital photography, composition, and manipulation of images while using Adobe Photoshop. Investigate competent compact digital and DSLR camera handling techniques. The course emphasizes exposure control, digital management, image editing, printing and presentation. Examines important photographic themes, lighting, and composition. Use Photoshop in acquiring, preparing, manipulating, storing, outputting and/or uploading and displaying digital images. Requires access to a camera with manual exposure controls, DSLR (digital single-lens-reflex) cameras are preferred. Corequisite: MMT 240L.

MMT 240L **Digital Photography & Photoshop Lab**

Laboratory activities relating to MMT 240. Corequisite: MMT 240.

MMT 241 **Graphic Design for the Web**

This intermediate-level digital design course enables students to create web-based graphic and media solutions. Primary software programs include Adobe CS6 Illustrator (for illustrating) and Photoshop (for graphics production and image editing). Students build upon and apply previously learned skills that are specific for business marketing and digital communications and create digital art assets such as logos, buttons, headers, splash screens, infographics and various design and editing techniques for vector graphics, bitmap images, and photos. Both programs are used to integrate Photoshop and Illustrator files for web applications. Prerequisites: MMT 239 and MMT 240. Corequisite: MMT 241L.

MMT 241L **Graphic Design for the Web Lab**

Laboratory activities relating to MMT 241. Corequisite: MMT 241.

Mathematics

MTH 070 Elementary Algebra

The following topics are covered: Fundamental properties of algebra, solutions of linear and quadratic equations, order of operations, rules of exponents, arithmetic operations of polynomials, factoring of polynomials, the two-coordinate graphing plane, point plotting, graphing of linear equations, and basic geometric and statistical formulas and problem solving. Concepts will be introduced numerically, graphically, and symbolically. Results will be communicated in oral and written form. Scientific calculator with fraction capabilities required. Prerequisite: MTH 020 with a grade of "C" or better, or placement into MTH 070.

MTH 095 Intermediate Algebra

The following topics are covered: Fundamentals of algebra, factoring of polynomials, solving quadratics using various techniques, simplifying of rational expressions, solving rational equations, simplifying of radical expressions, solving radical equations, definition of functions, evaluation of functions, and graphing of quadratics. Word problems will be included throughout the course. Concepts will be introduced numerically, graphically, and symbolically. Results will be communicated in oral and written form. Scientific calculator with fraction capabilities required. Prerequisite: MTH 060 and MTH 065 with a grade of "C" or better or MTH 070 with a grade of "C" or better or placement into MTH 095.

MTH 105M Math in Society

An exploration of present-day applications of mathematics focused on developing numeracy. Major topics include quantitative reasoning and problem-solving strategies, probability and statistics, and financial mathematics; these topics are to be weighted approximately equally. This course emphasizes mathematical literacy and communication, relevant everyday applications, and the appropriate use of current technology. Prerequisites: MTH 065 or MTH 070 or MTH 095 or MTH 098 or placement into MTH 105 and WRI 095 or WRI 121 or placement into WRI 121.

MTH 105Z Math in Society

An exploration of present-day applications of mathematics focused on developing numeracy. Major topics include quantitative reasoning and problem-solving strategies, probability and statistics, and financial mathematics; these topics are to be weighted approximately equally. This course emphasizes mathematical literacy and communication, relevant everyday applications, and the appropriate use of current technology. Prerequisites: MTH 065 or MTH 070 or MTH 095 or MTH 098 or placement into MTH 105 and WRI 095 or WRI 121 or placement into WRI 121.

MTH 111Z Precalculus I: Functions

A course primarily designed for students preparing for trigonometry or calculus. This course focuses on functions and their properties, including polynomial, rational, exponential, logarithmic, piecewise-defined, and inverse functions. These topics will be explored symbolically, numerically, and graphically in real-life applications and interpreted in context. This course emphasizes skill building, problem solving, modeling, reasoning, communication, connections with other disciplines, and the appropriate use of present-day technology. Prerequisite: MTH 095 with a grade of "C" or better or placement into MTH 111.

Music

MUS 206M History of Rock Music

Examines rock music's roots and development, its innovators and significant events through a cultural, as well as musical, perspective. Prerequisite: WRI 121.

MUS 265 Music for Teachers

Explores a variety of musical resources and activities appropriate for use in the classroom. This course will emphasize developing skills in understanding, presenting, and interpreting music while developing an awareness of the "how to" and "why" of teaching music to children.

Philosophy

PHL 204M Philosophy of Religion

Explores various philosophical perspectives on religion and issues traditionally taken up by religion, including the existence and attributes of God, faith, reason and mysticism, religion and science, religion and morality, religious language, and life after death. Prerequisite: WRI 121.

PHL 209 Business Ethics

Designed primarily for students of business and related fields, this course examines the ethical issues that arise in several aspects of business. Historical and contemporary ethical theories are used to examine business practices in management, the use of computers, marketing, accounting, and international industry and commerce. May also address social and environmental impacts as corporate versus individual responsibilities. Prerequisite: WRI 121.

Psychology

PSY 101 Psychology & Human Relations

Focuses on practical and personal applications of psychological principles. Encourages applications of psychological principles to daily living and to human interactions such as work, leisure, school, and relationships.

PSY 201A General Psychology I

Introduction to the general principles of psychology. Topics include history, research methods, brain and behavior, genes and environment, human development, and sensing and perception. Note — the introduction to psychology series does not have to be taken in order. PSY 201A is the recommended first class in the series. Prerequisite: WRI 121.

PSY 202M General Psychology II

Introduction to the general principles of psychology. Topics include memory, thinking, language and intelligence, motivation, personality, emotion and health, psychological disorders and treatment, and social psychology. Prerequisite: WRI 121.

PSY 235 Human Growth & Development I

A biosocial study of human development from conception to adolescence. Discusses the biological and social processes, i.e., cognition, personality, emotion, and social, affecting the developing child. Applications to health care, family, and education are discussed. Recommended: Previous coursework in psychology.

PSY 236 Human Growth & Development II

A psychological study of the continuing development of the human being from adolescence through old age and death. Discussion focuses on the social and healthcare issues of adulthood. Applications to healthcare, family, and social policy. Prerequisite: PSY 235.

Academic Summer Courses A - Z

Spanish

SPA 101M

First Year Spanish I

First in a three-course series designed to develop basic communication skills in oral and written Spanish. Introduces learners to the rich culture of the Spanish-speaking world, including listening, speaking, reading, writing, pronunciation, structure, vocabulary, and culture.

Statistics

STA 243Z

Elementary Statistics I

A first course in statistics focusing on the interpretation and communication of statistical concepts. Introduces exploratory data analysis, descriptive statistics, sampling methods and distributions, point and interval estimates, hypothesis tests for means and proportions, and elements of probability and correlation. Technology will be used when appropriate. Prerequisite: MTH 095 with a grade of "C" or better or MTH 105 with a grade of "C" or better, or MTH 111 with a grade of "C" or better or placement into MTH 111.

Writing

WRI 095

Intro to Expository Writing

Introduces college-level skills in writing paragraphs, essays, and reading critically. Students learn to revise for clarity, structural integrity, and correct grammar. Prerequisite: WRI 090 with a grade of "C" or better, or placement into WRI 095.

WRI 121M

Composition I

WRI 121M engages students in the study and practice of critical thinking, reading, and writing. The course focuses on analyzing and composing across varied rhetorical situations and in multiple genres. Students will apply key rhetorical concepts flexibly and collaboratively throughout their writing and inquiry processes. Prerequisite: WRI 095 with a grade of "C" or better or placement into WRI 121.

WRI 121Z

Composition I

WRI 121Z engages students in the study and practice of critical thinking, reading, and writing. The course focuses on analyzing and composing across varied rhetorical situations and in multiple genres. Students will apply key rhetorical concepts flexibly and collaboratively throughout their writing and inquiry processes. Prerequisite: WRI 095 with a grade of "C" or better or placement into WRI 121.

WRI 122Z

Composition II

WRI 122Z builds on concepts and processes emphasized in WRI 121Z, engaging with inquiry, research, and argumentation in support of students' development as writers. The course focuses on composing and revising in research-based genres through the intentional use of rhetorical strategies. Students will find, evaluate, and interpret complex material, including lived experience; use this to frame and pursue their own research questions; and integrate material purposefully into their own compositions. Prerequisite: WRI 121 with a grade of "C" or better.

WRI 227Z

Technical Writing

WRI 227Z introduces students to producing instructive, informative, and persuasive technical/professional documents aimed at well-defined and achievable outcomes. The course focuses on presenting information using rhetorically appropriate style, design, vocabulary, structure, and visuals. Students can expect to gather, read, and analyze information and to learn a variety of strategies for producing accessible, usable, reader-centered deliverable documents that are clear, concise, and ethical. Prerequisite: WRI 121 with a grade of "B" or better or WRI 122 with a grade of "C" or better.

AGRICULTURE AT KCC



Areas of Study:

- Animal Science
- Soil Science
- Agribusiness
- Natural Resource Management
- Agricultural Production

Program Options:

- Agriculture Science AAS
- Farm and Ranch Manager Career Pathway Certificate

Learn more at
www.klamathcc.edu/ag

AUTOMOTIVE TECHNOLOGY

Students in the Automotive Technology Program will receive preparation in eight areas of Automotive Service Excellence using state of the art equipment with master technician instructors. Those eight areas are brakes, electronic systems, engine performance, suspension and steering, automatic and manual transmission and trans axle, engine repair, and heating and air conditioning. Graduates of the program gain a competitive edge going forward in the automotive industry, providing them with an advantage when applying for any positions in the automotive repair industry.

www.klamathcc.edu/auto



DIESEL TECHNOLOGY

The Diesel Technology program provides instruction and training in over-the-road diesel technology in preparation for certification or licensure. The program ensures quality instruction by adapting to rapidly changing technological advancements and regulation changes in the diesel tech and transportation industries.

The Diesel Technology department seeks to serve the agricultural and governmental agency sectors with testing and safety trainings. Partnering with local and regional agencies and industries, the department prepares students for successful careers nationwide.

www.klamathcc.edu/diesel





**WHATEVER YOUR JOURNEY,
KCC HAS A PROGRAM FOR YOU!**

CONTACT KCC TO GET STARTED TODAY! 541-882-3521 | KLAMATHCC.EDU

Help to find your path.
Whether you want to transfer to a four-year university with an associate degree, skill-up with workforce trainings, or take a community education course, our advisors will work one-on-one with you to figure out how to make it happen.

Flexible classes for how you learn.
KCC offers online, face-to face, and HyFlex (a mixture of online and face-to-face) classes, so you have options for how you take your classes.

Supports to help you succeed.
Your success is important, so KCC offers several types of supports. Academic, wellness, and basic needs supports, are available for members of the KCC community.



WELDING

Areas of Study:

- Shielded metal arc welding (SMAW)
- Gas tungsten arc welding (GTAW)
- Gas metal arc welding (GMAW)
- Flux-cored arc welding (FCAW)
- Oxy-acetylene welding and cutting (OAW)
- Basic fabrication

www.klamathcc.edu/welding





AVIATION - HELICOPTER

www.klamathcc.edu/aviation

- KCC offers students flight hours in the Guimbal Cabri G2, the safest and most modern training helicopter on the market.
- Maximize your Veterans Affairs benefits through the Post-9/11 GI Bill® to pay all tuition and fees.
- Take your skills further with a transfer to a four-year university or advanced training.
- Use our diverse network of aviation graduates to help find the perfect employment opportunity for you!

Potential careers:

- EMS helicopter pilot,
- Aerial firefighting pilot,
- Tour pilot,
- Charter pilot, or
- Flight instructor.

- Gain student flight hours in single-engine and multi-engine fixed-wing aircraft.
- Obtain experience and decision-making skills flying in various environmental conditions.
- Maximize your Veterans Affairs benefits through the Post-9/11 GI Bill® to pay all tuition and fees.
- Take your skills further with a transfer to a four-year university or continue with airline transport pilot (ATP) training.

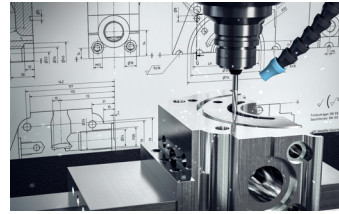
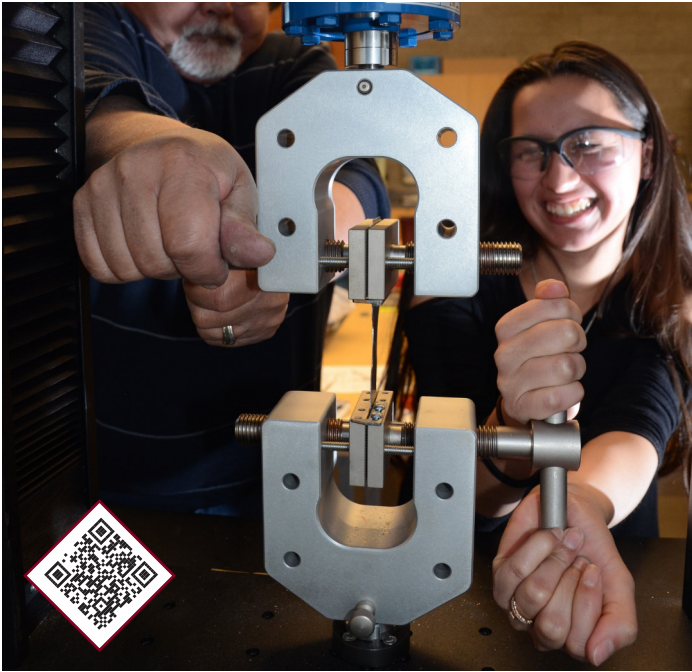
Potential careers:

- Aerial firefighting pilot,
- Tour pilot,
- Charter pilot, or
- Flight instructor.



AVIATION - AIRPLANE

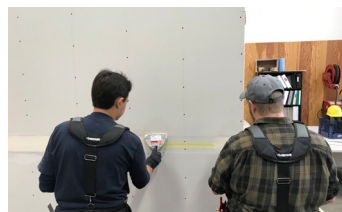
www.klamathcc.edu/aviation



MANUFACTURING ENGINEERING TECHNOLOGY

The Manufacturing Engineering Technology program at KCC will teach you the fundamentals of computer based 2D and 3D design. You will learn to apply mathematical concepts to basic engineering principles. If you choose not to continue on to a bachelor's degree, you are still employable in the field. If you do choose to continue on, transfer seamlessly to OIT or other partner institutions.

www.klamathcc.edu/met



APPRENTICESHIP RELATED TRAINING

Apprenticeship is an industry-driven, high-quality career pathway where employers can develop and prepare their future workforce, and individuals can obtain paid work experience, classroom instruction, and a portable, nationally recognized credential.

Areas of Study:

- Carpentry
- Cement Mason
- Drywall Taper/Finisher
- Electrical
- Interior/Exterior Specialist
- Millwright
- Painter
- Plumbing

www.klamathcc.edu/apprenticeship