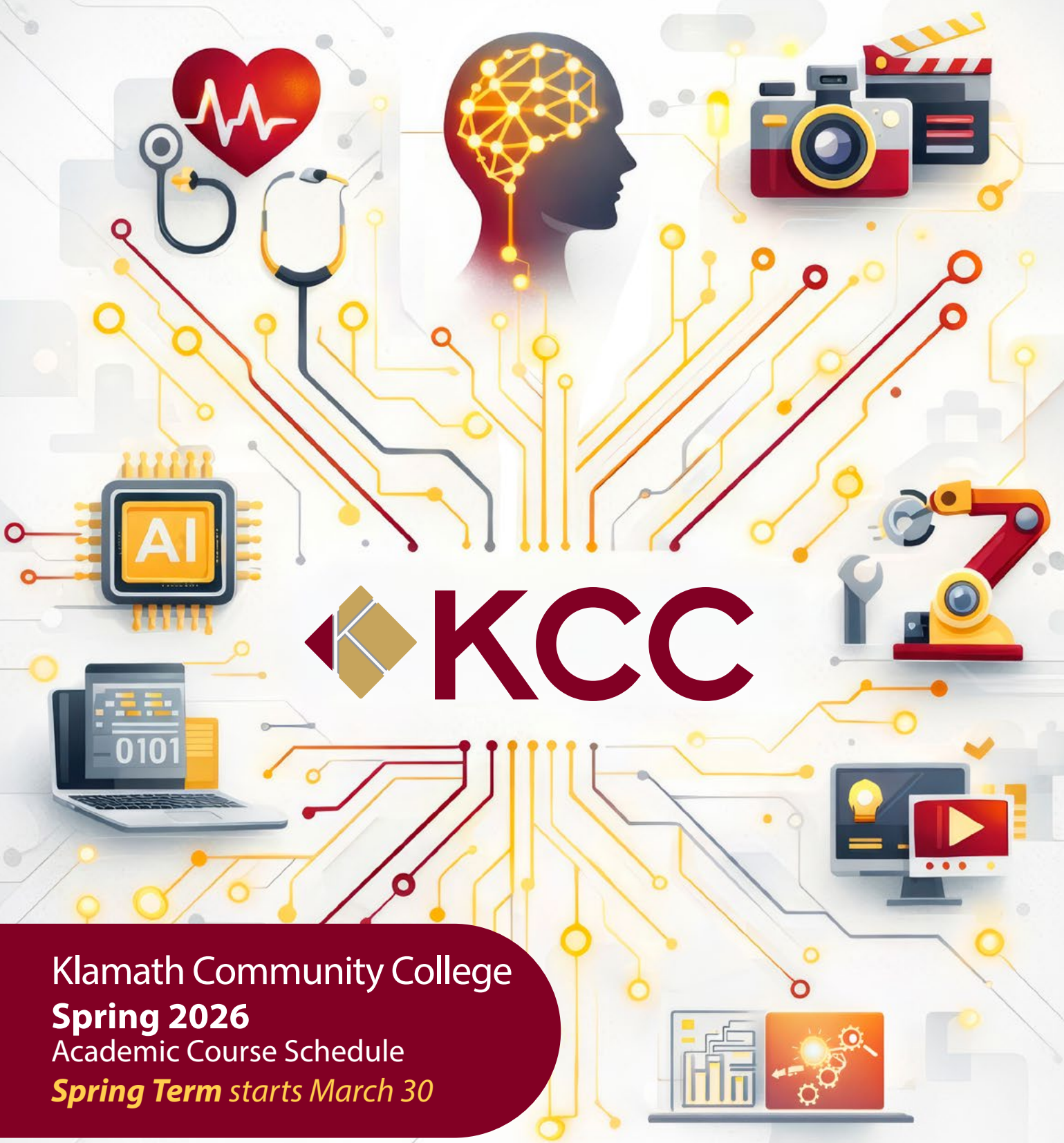


THE FUTURE OF AI



Klamath Community College
Spring 2026
Academic Course Schedule
Spring Term starts March 30

AI AND THE FUTURE OF WORK



Illustration made with AI utilizing Microsoft Copilot

By Lauren Aspell
AI Coordinator, KCC

Artificial Intelligence (AI) is a term many people have heard in the news, on social media, or in conversations at work. But beyond the headlines, AI is already shaping how we live and work in practical ways. From voice assistants on our phones to recommendation systems on shopping websites, AI tools are becoming part of everyday life. The bigger question for many communities is not whether AI will matter, but how it will influence jobs and career opportunities in the years ahead.

That is why Klamath Community College is integrating Artificial Intelligence literacy into every program of study—ensuring students graduate not just with knowledge, but with practical AI skills designed to support career readiness in a rapidly evolving workforce.

Is AI Taking Jobs? The Data Tells a Different Story

It's hard to ignore the steady stream of headlines warning that AI could wipe out large segments of the workforce, but when we look at the broader labor market data, the picture looks different than many people expect. While some roles are expected to decline, others are projected to grow, and entirely new occupations are emerging.

The World Economic Forum estimates that over the next several years:

- 170 million new jobs are expected to be created.
- 92 million jobs may be displaced.
- This will result in a net increase of approximately 78 million jobs globally.

So if the labor market is shifting rather than shrinking, what does that shift actually look like in everyday work?

AI Is Already Part of Everyday Work

For many people who are established in their careers, AI can feel distant or abstract—something that mainly affects technology companies or future graduates. In reality, AI is becoming a practical workplace tool across nearly every industry, from healthcare and construction to retail, education, agriculture, and public service.

For example, in office environments, AI tools can now help draft emails, summarize reports, or analyze large sets of data more quickly than before. In healthcare, AI can assist with scheduling, record-keeping, and image analysis. In construction and manufacturing, automated equipment can handle repetitive or hazardous activities. In these cases, technology often shifts how work is done rather than removing the need for people altogether.

The shift is less about AI taking over jobs and more about new tools redefining what normal performance looks like. In much the same way that email replaced fax machines and spreadsheets replaced paper ledgers, AI is becoming the next standard workplace skill.

The Rise of a New Workplace Skill: AI Fluency

A decade ago, computer skills were optional in many jobs. Today, they are expected almost everywhere. AI is following a similar path.

Research from the McKinsey Global Institute shows that demand for AI fluency—the ability to use and manage AI tools—has grown nearly sevenfold in two years. And a report from the IBM Institute for Business Value estimates that about 40% of the global workforce may need to re-skill within the next three years as AI tools spread through workplaces.

Article continued on page 9



Welcome! ¡Bienvenidos!

- 4
- 5
- 6
- 7
- 8
- 9
- 10
- 12

- KCC Administration**
- Calendar, Tuition & Fees**
- Student Resources**
- Student Life**
- Degrees & Certificates**
- Campus Safety**
- Campus Map**
- Courses A-Z**

Registering at KCC Has Never Been Easier!

New students start here

Current students start here

- 1 Step 1 - Complete a KCC Application for Admission**
Available online at www.klamathcc.edu/admissions or call 541-882-3521.
- 2 Step 2 - Apply for Financial Aid**
Students who wish to receive federal financial aid should apply at studentaid.gov/fafsa. Apply as early as possible.
- 3 Step 3 - Meet with an Advisor**
Meet with KCC Student Services online or in person to determine if you need a placement test, and to register for classes inside Founders Hall or call 541-882-3521.
- 4 Step 4 - Purchase textbooks**
Textbooks may be purchased at the KCC Bookstore in Founders Hall and at bookstore.klamathcc.edu. If financial aid is complete, students can charge books to their student account at the bookstore. For more information, please visit bookstore.klamathcc.edu or call 541-880-2345.

- 1 Step 1 - Meet with your academic advisor**
Students will need to receive registration clearance to be able to register for classes.
- 2 Step 2 - Register for classes**
Save time by using web registration on mykcc.klamathcc.edu.
- 3 Step 3 - File a FAFSA On the Web**
Students must file a Free Application for Federal Student Aid (FAFSA) every year for the upcoming academic year (summer-spring terms) if they wish to receive financial aid. Check your online account to make sure everything is ready for the upcoming term.
- 4 Step 4 - Purchase textbooks**
Textbooks may be purchased at the KCC Bookstore in Founders Hall and at bookstore.klamathcc.edu. If financial aid is complete, students can charge books to their student account at the bookstore. For more information, please visit bookstore.klamathcc.edu or call 541-880-2345.

KCC Mission

Klamath Community College provides accessible, quality education and services in response to the diverse needs of the student, business, and community.

The College supports student success in workforce training, academic transfer, foundational skills development, and community education.

Accreditation

Klamath Community College is accredited by the Northwest Commission on Colleges and Universities.

Equal Opportunity Policy

It shall be the policy of the Klamath Community College District to affirm the rights of all individuals to equal education, activities, facilities, and employment without regard to age, sex, disability, national origin, race, marital status, religion, or sexual orientation in accordance with federal and state laws. Klamath Community College complies with Titles VI and VII of the Civil Rights Act of 1964, Title IX of the Educational Amendments of 1972, and Section 504 of the Rehabilitation Act of 1973, and Title II of the Americans with Disabilities Act of 1990, and any amendments thereto.

Inquiries or grievances concerning the application of these laws and regulations to the College may be directed to Klamath Community College's Executive Director of Human Resources and General Counsel at 7390 South 6th St., Klamath Falls, OR 97603 or at 541-882-3521 or to the Office of Civil Rights, U.S. Department of Education, 915 Second Ave. Room 3310, Seattle, WA 98174-1099.

Accommodations

If a person with a disability needs assistance in order to attend or participate in a college event or meeting, please notify accessibility services at 541-882-3521 within three days of the meeting.



AI and the Future of Klamath County's Economy



Randy Cox
KCEDA CEO/
Executive Director

Artificial Intelligence is often framed as something happening in Silicon Valley or global tech hubs. But the truth is much closer to home. AI will influence the economic future of Klamath County, not by replacing our workforce overnight, but by reshaping how we work, compete, and grow.

For rural communities like ours, AI's greatest economic impact will be productivity. Businesses that adopt AI tools will move faster, operate leaner, and make better-informed decisions. In manufacturing and wood products, AI is already being used nationwide for predictive maintenance, quality control, and production scheduling. That means fewer breakdowns, lower waste, and greater competitiveness. For Klamath County, that translates to stronger local employers and more stable jobs.

In healthcare, one of the fastest-growing sectors in Oregon, AI can reduce paperwork burdens, assist with diagnostics, and improve patient triage. Importantly, it supports healthcare professionals rather than replace them. For a rural region that continually faces workforce shortages, these tools could help extend capacity and improve access to care.

Agriculture and natural resource industries will also benefit. AI-driven precision tools can help optimize irrigation, monitor crop health, and improve equipment performance. In regions where water, yield stability, and input costs matter deeply, these efficiencies are not small, they are transformative.

For small businesses, the impact may be even more immediate. AI tools can help automate bookkeeping, customer communication, marketing, and inventory management. The small contractor or retailer who embraces these tools can quote faster, manage costs more accurately, and compete more effectively.

The question is not whether AI will affect Klamath County, it will. The question is whether we prepare our workforce to lead in that future.

This is where Klamath Community College plays a critical role. The future workforce will require hybrid skills: technical proficiency combined with industry knowledge. Automation technicians, data-informed healthcare workers, advanced manufacturing operators, IT support specialists, these roles will grow in importance. Students who understand how to use AI tools responsibly and effectively will be more competitive in nearly every field.

Artificial Intelligence is not a replacement for human ingenuity. It is a tool. And like any tool, its economic impact depends on who knows how to use it.

Klamath County has an opportunity. By aligning education, workforce training, and local industry needs, we can ensure AI strengthens our regional economy rather than sidelines it. That means investing in digital literacy, stackable credentials, and practical training that equips students for real-world applications.

AI will not define our future. Our preparedness will.

If we equip our students and businesses with the right skills and mindset, Klamath County can remain resilient, competitive, and positioned for next-level growth in the decades ahead.

KCC Administration



Dr. Roberto Gutierrez
President



Jamie Jennings
VP of Academic Affairs



Denise Reid
VP of Administrative Services



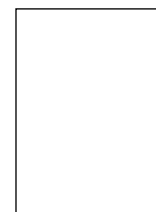
Gail Schull
VP of Student Affairs



Josh Guest
General Counsel

KCC Board of Education

- | | |
|--------------------------|---------------------------|
| Zone 1 — Kate Marquez | Zone 5 — Rejeana Jackson |
| Zone 2 — Kenneth Decrans | Zone 6 — Raymond Holliday |
| Zone 3 — Misty Buckley | Zone 7 — TBD |
| Zone 4 — Dave Jensen | |



TBD
VP of External Programs

Academic Calendar

Spring Term 2026

Register now! Orientation is now mandatory for new students. All degree-seeking students must speak with an academic advisor before registering for classes.

March 30	Classes Begin
April 3	Last Day to Drop or Add Course (instructor permission required after classes begin)
	Last Day to Request a Refund
May 4	Summer Term Registration Opens
May 22	Last Day to Withdraw with a 'W'
May 25	Campus Closed - Memorial Day
June 8-12	Final Exams
June 12	Last Day of Term
June 12	Commencement

Tuition, Fees, and Funding

TUITION & FEES

Current tuition information can be found at www.klamathcc.edu/tuition

SCHOLARSHIPS

General scholarship information can be found at www.klamathcc.edu/scholarships

KCC Foundation scholarships can be found at www.klamathcc.edu/foundation-scholarships

OTHER FUNDING

Emergency funds through the KCC Foundation www.klamathcc.edu/foundation-scholarships

STEP/SNAP/TANF JOBS

www.klamathcc.edu/step

Payment

Tuition and fees are due by the first day of class; accounts are considered past due after this date. Students must pay their account in full or have a completed financial aid application filed by this date. The College accepts all traditional forms of payment, including cash (U.S. dollars only), checks, MasterCard, VISA, Discover, debit cards, and payments online. Third-party payment arrangements are also acceptable, which include agency or company payment authorizations, financial aid, scholarships, and veterans educational benefits. It is the student's responsibility to ensure that written third-party authorization is received by the College. Installment plans are available for students with a minimum balance of at least \$275. For more information on setting up an installment agreement and making payments, please contact the cashier at 541-880-2237.

A late fee of \$25 may be assessed on student accounts that are past due. This fee may be assessed up to three times during the term. Failure to make timely payments or to make satisfactory payment arrangements by the due date may result in late fees and/or administrative withdrawal from classes. Prior term unpaid balances must be paid in full before registering for another term. Other college services such as diplomas, registration privileges, or any combination thereof may be withheld if students do not make satisfactory arrangements to meet their financial obligation to the College. KCC and Oregon Tech provide concurrent notification to one another of student holds.



Accessibility Services

Accessibility Support Services are available for students with documented disabilities. Students can meet with the Accessibility Coordinator to help set up accommodations for courses. Accommodations can include extra time on tests, a dedicated note taker, and more.

Accessibility Support Services can be contacted at kcc.disability@klamathcc.edu or call 541-882-3521.

Community Resource Benefits Navigator

The Community Resource Benefits Navigator coordinates a wide range of non-academic resources, assists students in evaluating and addressing their specific barriers, and ensures students are aware of all the available resources and benefits, including:

- Referring students to on-campus resources
- Referring students to external partners
- Connecting students to local, state, and federal benefits and resources by:
 - Determining eligibility,
 - Assisting students with the application process,
 - Ensuring students maximize available resources and benefits

Contact the Community Resource Benefits Navigator at kcc.benefits.navigator@klamathcc.edu.

TANF Job Opportunity and Basic Skills (JOBS)

JOBS services are available for TANF recipients, referred by a Department of Human Services (DHS) Family Coach, of all ages who are seeking a job or career education that will allow them to seek, or return to, work in less than one year. Services available:

- GED and English as a Second Language (ESL) program
- Academic skill building
- Connection to additional resources and scholarships (for eligible participants)

Contact your DHS Family Coach or the KCC JOBS Coordinator at 541-880-2381 or ruizm@klamathcc.edu.

KCC Bookstore

Textbooks for Klamath Community College are available at the KCC Bookstore in Founders Hall, Building 9. The store also offers supplies, KCC clothing, graduation regalia, and food. Students with federal financial aid can charge textbooks and supplies to their accounts. Books can be sold back at the end of the term. For more info, visit bookstore.klamathcc.edu or call 541-880-2345.

KCC Career Services Center

The KCC Career Services Center, located in Building 4, Room 415, is your one-stop-shop for help with career counseling, advising, and coaching, including individualized assistance and/or workshops for the following topics:

- Résumé and cover letter writing
- Filling out job applications
- Behavioral and traditional interviewing, and mock interviews
- Dressing for interviews, office visits, and work
- Job search techniques
- Networking with employers
- Job fairs
- Labor market research/career exploration assessments to find a career based on your interests

Contact the Career Services Center at kcccareercenter@klamathcc.edu or call 541-880-2354.

The Learning Resource Center

The Learning Resource Center (LRC) on the second floor in Founders Hall, Building 9, includes the Library, and Tutoring Center. It offers study space, research resources, tutoring, computers, printing, copying, and scanning. KCC students can access the online SAGE Library System, which includes over 75 libraries in Eastern Oregon. Many LRC resources are available online.

SNAP Training and Employment Program (STEP)

STEP services are available for SNAP recipients of all ages who need help in seeking, or continuing with, job or career education. Services available:

- Career coaching
- Academic skill building
- Career Pathways training
- Internships / work experience
- KCC tuition, books, and fee support

Contact the STEP Coordinator at 541-880-2343 or scobee@klamathcc.edu.

Technology Help Desk

Need help with printing, installing Microsoft Office 365, or other technology?

Visit the Technology Help Desk in the Health Sciences Building (Bldg 6) room 6134.

Phone: 541-880-2226 or email: is.helpdesk@klamathcc.edu

Hours: Monday - Friday: 7 AM-8 PM, Saturday: 10 AM-2 PM

Testing Center

The Testing Center provides testing/proctoring services for a variety of assessments to KCC students, the extended community, other partnering colleges, and local/state licensing agencies. For more information, call 541-880-2334. The Testing Center is located in Building 3.

TRiO Student Support Services

TRiO Student Support Services is a free program funded by the U.S. Department of Education. TRiO accepts up to 140 students and follows that cohort from program entry to graduation and/or transfer. Students receive extra academic advising, transfer assistance, tutoring, career and learning style assessment, visits to universities, and several cultural events each year.

TRiO is located in Founders Hall, Building 9. For more information, or to request an application, call 541-880-2289, email trio@klamathcc.edu or visit www.klamathcc.edu/trio-sss.

Tutoring Services

IN-PERSON TUTORING

Tutors are available to help students in a variety of subjects, including math, chemistry, physics, biology, writing, computers, English, Spanish, and more! This service is free to current students in the LRC's Tutoring Center, upstairs in Founders Hall, room 9120.

TutorMe

Students have free 24/7 access to reference help and online tutoring through the College's online learning platform, Canvas.

Veterans Services

KCC supports U.S. military service members, veterans, and spouses as students. The Campus Veterans Resource Center is located in Founders Hall, Building 9. Staff can assist with financial aid and education needs, whether you're pursuing traditional training, a CCAF degree, or online courses through General Education Mobile. For more information, call 541-880-2214 or email veterans@klamathcc.edu.

Get Involved and Stay Connected!

Office of Student Life

Student Life promotes the development and success of our students by providing opportunities for meaningful, diverse connections; personal and professional leadership and growth; and community engagement and service.

Get connected! Stop by the Office of Student Life to find ways to enhance your college experience at KCC and develop your skills outside the classroom.

For more information or to get involved, contact Student Life at 541-880-2321 or via email at studentlife@klamathcc.edu.

Experiences Beyond the Classroom

COMMUNITY SERVICE & VOLUNTEERISM

The Volunteer Badgers program offers opportunities for students and employees to give back to the Klamath Falls community. From adopting a section of the OC&E Trail to volunteering at local events, Volunteer Badgers host service days and are working to expand the number and type of projects available.

The Office of Student Life also hosts a volunteer fair to facilitate meaningful service and community engagement in partnership with community-based organizations. Check out our calendar for event dates and times: www.klamathcc.edu/events.

DIVERSITY

The Office of Student Life celebrates the diversity of experiences and backgrounds found within the KCC community. To foster connection and growth among students and staff, Student Life hosts a wide variety of diversity-based activities and events.

WELLNESS

Being a student is more than sitting in a classroom. Student Life aims to get students moving and practice wellness in their everyday lives. Students are invited to use the Wellness Center in Building 4. Students are also invited to join the soccer, golf, or bowling clubs.

LEADERSHIP

The Office of Student Life hosts workshops to encourage student learning beyond the classroom. These workshops are free and open to students at any level in their leadership journey. Potential topics include effective communication, résumé review, informed decision making, emotional intelligence, and more.

KCC Foundation

The KCC Foundation offers tuition, course fee, book and other cost of attendance support through scholarships and emergency grants. Programs include:

- **Academic Scholarships** — Academic scholarships are offered two times a year on a regular cycle.
- **Education Access & Opportunity (EAO) Fund** — EAO funds support students who are not FAFSA eligible or who are seeking education that is not supported by Federal Financial Aid, such as, Non-Credit Skills training, Registered Apprenticeships, Construction Trades training, SBDC Business Management trainings, and Adult GED/ESL programs.
- **Emergency Support** — Emergency support is offered to help students facing a one-time emergency that will, or could, prevent them from successfully completing their education.

Foundation support funding has set limits, and all funds require an internal approval process prior to awarding. For more information email foundation@klamathcc.edu or call 541-880-2234.



Associated Students of
KLAMATH
Community College

Get Involved

ASSOCIATED STUDENTS OF KLAMATH COMMUNITY COLLEGE (ASKCC)

ASKCC advocates for the student body at local, state, and federal levels, creating opportunities for community engagement and providing access to resources based on individual and collective student needs.

Advocacy • Service • Knowledge • Community • Connection

ASKCC OFFICERS

ASKCC officers are selected each year during the spring term and work to advocate for the student body each academic year (summer term through spring). Officers are available for support or a listening ear during their office hours each week in the Office of Student Life located in Building 4.

If you are interested in applying for an officer position, stop by the Office of Student Life or email studentlife@klamathcc.edu.

Student Clubs and Organizations

WHY SHOULD YOU GET INVOLVED?

Have you ever been passionate to represent a culture or hobby? Joining a club would be a perfect fit! At KCC, student clubs and organizations are the perfect environment to take ownership of your college experience and have some fun. Students who are involved in clubs will tell you that they provide leadership opportunities, a greater sense of belonging, and a positive outlet for the stress that college can bring.

Visit www.klamathcc.edu/clubs to see a list of active clubs.

DON'T SEE A CLUB YOU WANT TO JOIN? CREATE A NEW CLUB!

It's simple to start a new club on campus! If you have an idea for a club that you would like to see at KCC, contact Student Life, at studentlife@klamathcc.edu or 541-880-2321.



Accounting

- Associate of Applied Science
 - Accounting AAS
- One-Year Certificate
 - Accounting Certificate
- Less-Than-One-Year Certificate
 - Accounting Career Pathway Certificate

Associate of Arts Transfer (AAT)

- AAT - English Literature

Associate of Arts, Oregon Transfer (AAOT)

- AAOT
- AAOT - Elementary Education
- AAOT - Exercise Science Emphasis
- AAOT - Fire Ecology Emphasis
- AAOT - Forest Ecology Emphasis
- AAOT - Math Emphasis

Associate of General Studies (AGS)

- AGS
- AGS - Psychology

Associate of Science (AS)

- Associate of Science

Associate of Science Transfer (AST)

- AST - Biology
- AST - Business

Automotive Technology

- Associate of Applied Science
 - Automotive Technology AAS
- Less-Than-One-Year Certificate
 - Automotive Technician Electrical/Electronic Specialist Career Pathway Certificate

Aviation

- Associate of Applied Science
 - Aviation Airplane AAS
 - Aviation Helicopter AAS

Business Administration

- Associate of Applied Science
 - Business Administration AAS (Emphasis in Business Management or Marketing)
- One-Year Certificate
 - Business Administration Business Management Certificate
 - Business Administration Marketing and Sales Certificate
 - Business Administration Human Resources Certificate
- Less-Than-One-Year Certificate
 - Business Administration First-Line Supervisor Fundamentals Career Pathway Certificate

Business Technology

- Associate of Applied Science
 - Business Technology Administrative Office Professional AAS
- One-Year Certificate
 - Business Technology Administrative Office Professional Certificate
- Less-Than-One-Year Certificate
 - Business Technology Administrative Office Professional Office Support Specialist Career Pathway Certificate

Computer Engineering Technology

- Associate of Applied Science
 - Computer Engineering Technology AAS
- One-Year Certificate
 - Computer Systems Fundamentals Certificate
- Less-Than-One-Year Certificate
 - Computer Systems Fundamentals Career Pathway Certificate

Cosmetology

- Associate of Applied Science
 - Cosmetology AAS
- One-Year Certificate
 - Cosmetology - Barbering Certificate
 - Cosmetology - Hair Design Certificate
- Less-Than-One-Year Certificate
 - Cosmetology - Esthetics Career Pathway Certificate

Criminal Justice

- Associate of Applied Science
 - Criminal Justice AAS
- One-Year Certificate
 - Addiction Studies Certificate
 - Criminal Justice Certificate
- Less-Than-One-Year Certificate
 - Addiction Studies Career Pathway Certificate

Cybersecurity and Networking

- Associate of Applied Science
 - Cybersecurity and Networking AAS
- One-Year Certificate
 - Secure Network Technician Certificate
- Less-Than-One-Year Certificate
 - Computer Support Technician I Career Pathway Certificate

Diesel Technology

- Associate of Applied Science
 - Diesel Technology AAS
- Less-Than-One-Year Certificate
 - Diesel Technician Electrical/Electronic Specialist Career Pathway Certificate
 - Professional Truck Driver Career Pathway Certificate

Digital Media Design

- Associate of Applied Science
 - Digital Media Design AAS
- One-Year Certificate
 - Digital Media Design Multimedia Design Certificate
 - Digital Media Design Web Design Certificate
- Less-Than-One-Year Certificate
 - Digital Media Design Multimedia Design Career Pathway Certificate
 - Digital Media Design Web Design Career Pathway Certificate

Education

- Associate of Applied Science
 - Early Childhood Educator Emphasis AAS
 - Education - Paraeducator Emphasis AAS
- One-Year Certificate
 - Early Childhood Educator Certificate
 - Education - Paraeducator Certificate
- Less-Than-One-Year Certificate
 - Early Childhood Education Career Pathway Certificate
 - Early Childhood Education Career Pathway Certificate (Spanish)
 - Education - Paraeducator Career Pathway Certificate

Emergency Response and Operations

- Associate of Applied Science
 - Emergency Response and Operations AAS (Emphasis in Criminal Justice, Emergency Medical Technician, Structural Fire Science, and Wildland Fire Science)
- One-Year Certificate
 - Criminal Justice Certificate - ERO
 - Emergency Medical Technician Certificate
 - Structural Fire Science Certificate
 - Wildland Fire Science Certificate
- Less-Than-One-Year Certificate
 - Criminal Justice Career Pathway Certificate
 - Emergency Medical Technician Career Pathway Certificate
 - Structural Fire Science Career Pathway Certificate
 - Wildland Fire Science Career Pathway Certificate

Health Services

- Associate of Applied Science
 - Health Information Management AAS
- One-Year Certificate
 - Certified Coding Specialist Certificate
- Less-Than-One-Year Certificate
 - Electronic Health Record Career Pathway Certificate
 - Medical Administrative Assistant Career Pathway Certificate

Laboratory Technician

- Associate of Applied Science
 - Laboratory Technician AAS
- One-Year Certificate
 - Laboratory Technician Certificate
- Less-Than-One-Year Certificate
 - Biological and Biotechnology Laboratory Technician Career Pathway Certificate
 - Medical and Clinical Laboratory Technician Career Pathway Certificate

Manufacturing Engineering Technology

- Associate of Applied Science
 - Manufacturing Engineering Technology AAS
- One-Year Certificate
 - Manufacturing Engineering Technologist Certificate
- Less-Than-One-Year Certificate
 - Computer Aided Design Career Pathway Certificate
 - Mechanical Design Solid Modeling Career Pathway Certificate

Nursing

- Associate of Applied Science
 - Nursing AAS
- One-Year Certificate
 - Practical Nurse Certificate

Surgical Technology

- Associate of Applied Science
 - Surgical Technology AAS

Welding

- One-Year Certificate
 - Welding Certificate
- Less-Than-One-Year Certificate
 - Welding - Gas Metal Arc/Wire Feed Welding Career Pathway Certificate
 - Welding - Shield Metal Arc/Stick Welding Career Pathway Certificate
 - Welding - Tig/Aluminum Stainless Steel Flat Welding Career Pathway Certificate
 - Welding - Shield Metal Arc/Stick Welding of Pipe Career Pathway Certificate



Sergeant Chris Zupan

The Campus Safety staff is committed to promoting a safe and secure campus and protecting our college community. All members of the College can assist in making Klamath Community College a safe environment. We need your eyes and ears open to help keep our campus safe. Please report any suspicious activity to Campus Safety.

CONTACT INFORMATION

Visit Building 3, Room 301

Emergency: call 911

Campus Safety can be contacted at 541-882-2314.

You can contact Campus Safety via email at safety@klamathcc.edu.

CRIME PREVENTION TIPS

- Always lock your car.
- Park in a lighted area at night.
- Try to travel in groups.
- Be aware of blue-light emergency phone locations.
- Walk with your keys in hand.
- Look in your backseat before entering your car.
- Carry your purse or backpack close to your body.
- Never accept a ride from a stranger.
- Let friends and/or family know of your schedule.
- In case of an emergency, CALL 911!

Klamath Community College Non-Discrimination and Equal Opportunity Policy

Klamath Community College is an equal opportunity educator and employer. It shall be the policy of the Klamath Community College District to affirm the rights of all individuals to equal education, activities, facilities, and employment without regard to age, sex, disability, national origin, race, color, marital status, religion, or sexual orientation in accordance with federal and state laws. Klamath Community College complies with Titles VI and VII of the Civil Rights Act of 1964, Title IX of the Educational Amendments of 1972, Section 504 of the Rehabilitation Act of 1973, Title II of the Americans with Disabilities Act of 1990, and any amendments thereto.

Inquiries or grievances concerning the application of these laws and regulations to the College may be directed to Klamath Community College's Executive Director of Human Resources and General Counsel at 7390 South 6th St., Klamath Falls, OR 97603 or at 541-882-3521; or to the Office of Civil Rights, U.S. Department of Education, 915 Second Ave. Room 3310, Seattle, WA 98174-1099.

Article continued from page 2

Workers who develop AI fluency now are more likely to stay competitive, qualify for new roles, and adapt as industries change. Those who wait may find themselves needing to catch up quickly in a job market that is already moving forward.

How Employers Are Preparing for the Shift

Employers are not standing still while these changes unfold. Surveys of employers worldwide show:

- 85% plan to prioritize upskilling their existing workforce.
- 70% plan to hire new staff with emerging skill sets.
- 73% plan to accelerate automation of certain processes.

These numbers suggest that organizations are preparing for change by investing in both people and technology. For workers, this means opportunity—but also expectation. Employers increasingly value adaptability, curiosity, and the willingness to learn new tools.

What This Means for Our Community

For local communities, the rise of AI presents both challenges and opportunities. Businesses may find new ways to operate more efficiently. Students may encounter new career paths that did not exist a decade ago. Workers in established professions may see parts of their roles change, requiring updated skills or additional training.

For community members who are already in their careers, KCC is also offering non-credit AI classes and short-term workshops, providing flexible ways to build new skills without returning to school full-time.

As the workplace continues to evolve, the question is no longer "Will I need to learn something new?" but "When will I start?"

Sources:

World Economic Forum - Future of Jobs Report, 2025

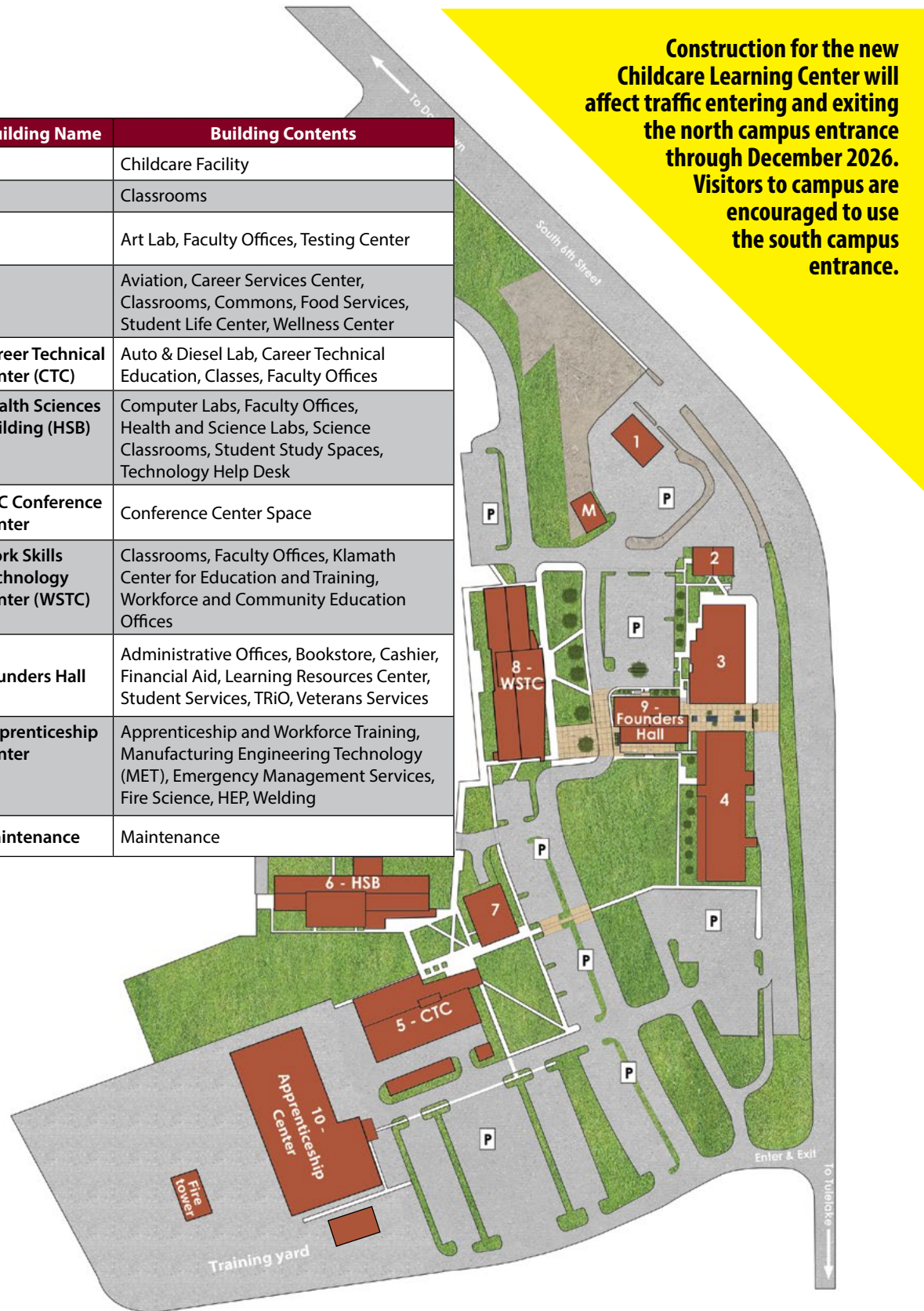
McKinsey Global Institute - Agents, Robots, and Us: Skill Partnerships in the Age of AI, 2025

IBM Institute for Business Value - Augmented Work for an Automated, AI-Driven World, 2023

U.S. Bureau of Labor Statistics - Monthly Labor Review: Incorporating AI Impacts in Employment Projections, 2025

Building #	Building Name	Building Contents
Building 1		Childcare Facility
Building 2		Classrooms
Building 3		Art Lab, Faculty Offices, Testing Center
Building 4		Aviation, Career Services Center, Classrooms, Commons, Food Services, Student Life Center, Wellness Center
Building 5	Career Technical Center (CTC)	Auto & Diesel Lab, Career Technical Education, Classes, Faculty Offices
Building 6	Health Sciences Building (HSB)	Computer Labs, Faculty Offices, Health and Science Labs, Science Classrooms, Student Study Spaces, Technology Help Desk
Building 7	KCC Conference Center	Conference Center Space
Building 8	Work Skills Technology Center (WSTC)	Classrooms, Faculty Offices, Klamath Center for Education and Training, Workforce and Community Education Offices
Building 9	Founders Hall	Administrative Offices, Bookstore, Cashier, Financial Aid, Learning Resources Center, Student Services, TRiO, Veterans Services
Building 10	Apprenticeship Center	Apprenticeship and Workforce Training, Manufacturing Engineering Technology (MET), Emergency Management Services, Fire Science, HEP, Welding
Building M	Maintenance	Maintenance

Construction for the new Childcare Learning Center will affect traffic entering and exiting the north campus entrance through December 2026. Visitors to campus are encouraged to use the south campus entrance.



Common Course Numbering

In February 2023, the Oregon Higher Education Coordinating Commission (HECC) implemented Common Course Numbering. These courses are standardized in the course title, number, learning outcomes, descriptions, subject code, and credits. The courses are intended to help students keep credit when they transfer from a community college to a four-year university. This saves students time and money by not having to re-take courses. This change benefits students who transfer between any public institution in Oregon.

What does that mean for you? It means that when you see a course code ending in the letter 'Z' you are looking at a common course, so it will transfer with no loss of credit between any of Oregon's public universities or community colleges. Be on the lookout for these new courses in the following pages and online at classes.klamathcc.edu.

Seamless Transfer

KCC is a regionally accredited institution that provides seamless transfer opportunities.

Regional Accreditation

www.klamathcc.edu/accreditation

Transfer

www.klamathcc.edu/transfer

KCC Common Courses:

- BIO 223Z Principles of Biology: Ecology and Evolution
- BUS 101Z Introduction to Business
- BUS169Z Data Analysis Using Microsoft Excel
- BUS 211Z Principles of Financial Accounting
- BUS 213Z Principles of Managerial Accounting
- BUS 226Z Introduction to Business Law
- CHE 223Z General Chemistry III
- CHE 229Z General Chemistry III Lab
- COM 111Z Public Speaking
- COM 218Z Interpersonal Communication
- ECO 201Z Principles of Microeconomics
- ECO 202Z Principles of Macroeconomics
- ENG 104Z Introduction to Fiction
- ENG 105Z Introduction to Drama
- ENG 106Z Introduction to Poetry
- MTH 105Z Math in Society
- MTH 111Z Pre-Calculus I: Functions
- MTH 112Z Pre-Calculus II: Trigonometry
- MTH 251Z Differential Calculus
- MTH 252Z Integral Calculus
- PSY 201Z Introduction to Psychology
- PSY 202Z Introduction to Psychology II
- STA 243Z Elementary Statistics I
- WRI 121Z Composition I
- WRI 122Z Composition II
- WRI 227Z Technical Writing

Learn more about Common Course Numbering (HECC website)



Course codes ending with 'M'

Have you ever looked at the course schedule and wondered why some course codes end with 'M'? You are not alone. Courses that end with 'M' are different from other courses. 'M' classes are always worth five (5) credits, and they cover the same material as other courses with the same title and code. This extra credit hour means more coursework for the same material. There are no extra fees for 'M' classes, but they do cost more in tuition since tuition is charged per credit.

KCC's 'M' courses are intended for our students in the military, but any current student can take them. However, before signing up for an 'M' course, make sure to talk to your advisors since the credit difference may affect your financial aid or degree plan.



IT'S NOT TOO LATE TO FILE YOUR 2025-2026 FAFSA APPLICATION

Pay for it like a BO\$\$

There are a number of ways to finance your education.

- File your 2025-2026 application now at studentaid.gov/fafsa. You will now need to log in and gather your information to get started. If you have never filed a FAFSA before or created an account you will need to do so at this time. This is the information you will need:
 - 2023 Tax financial information (*taxes*)
 - Social Security Number
 - Parents information if you are a dependent student (*if you are unsure if this applies to you, please contact us*)
- Ask a financial aid advisor about Pell Grants. 70% of KCC students qualify for Pell!
- Apply for other grants at oregonstudentaid.gov/grants. You may qualify for free tuition!
- Apply for Office of Student Access and Completion (OSAC) scholarships at oregonstudentaid.gov/scholarships
- Transferring to Oregon Tech? Join the **Badger to Owl Connection** and save thousands.
- Take 15 or more credits through our **15 to Finish** program and earn three free lecture credits.
- Apply for scholarships through the KCC Foundation or other sources listed on KCC's website.

For more information about financing your KCC experience, call 541-880-2352, see a financial aid advisor in Founders Hall, or visit www.klamathcc.edu/financial-aid TODAY!

ACADEMIC COURSES A-Z

Addiction Studies

ADS 102 Drug Use & Addiction

An examination of commonly abused drugs with emphasis on the physical, psychological, and behavioral consequences of these drugs. Includes drug chemistry, physiological effects of drug use upon the body, and specific treatment formats and techniques. Recommended: WRI 121Z placement.

ADS 152 Group Counseling & Addiction

Introduction and examination of the theory and practice of group counseling in addiction counseling. Students will examine various counseling theories and begin developing their own approach to addictions counseling. Students will participate in guided practice to facilitate skill development. Recommended: Placement into WRI 121Z.

ADS 157 Risk Assessment & Intervention

An examination of risk assessment and risk management. Topics will include such areas as HIV/AIDS, hepatitis, suicide, and other areas of self-harm. Students will be able to identify ways in which harm reduction and management of high-risk behaviors in addictions counseling represents an important shift in the focus of addictions treatment. Recommended: WRI 121Z placement.

ADS 158 Introduction to Addiction Medication Assessment and Placement

Introduction to the American Society of Addiction Medication (ASAM) six dimensions of assessment and placement criteria for persons who are misusing or abusing substances. Students will gain an understanding of the relationships between assessment and intervention planning for those who are misusing or abusing substances. Students will also learn about the correlation between substance abuse and mental health issues.

ADS 280 Coop Wk Exp: Addictions

On-the-job, paid or volunteer, experiences which allow for the application and development of knowledge, skills, and attitudes learned through the on-campus program. Instructor permission is required, and the student must locate a job site for the course.



Artificial Intelligence

AIT 123 Introduction to Artificial Intelligence

Artificial intelligence (AI) is transforming how we learn, work, and communicate but understanding how it actually works is key to using it wisely. In this course, students will explore the fundamentals of AI and machine learning, uncover how systems are trained and make predictions, and learn how to use AI tools ethically, safely, and effectively in academic and personal contexts. Through interactive modules, students will practice prompt engineering, evaluate the accuracy and bias of AI outputs, and develop the skills needed to become responsible digital citizens in an AI-driven world. Corequisite: AIT 123L.

AIT 123L Introduction to Artificial Intelligence Lab

Laboratory activities related to AIT 123. Corequisite: AIT 123.

Automotive Technology

AMT 292 Lube Technician 1

Students will perform career readiness education through practice of live work-based skills. This course will focus on performance, procedure, and applied skills of a lube technician 1. Prerequisite: AMT 291 with a grade of 'C' or better.

AMT 295 Entry Level Technician 2

Students will perform career readiness education through practice of live work-based skills. This course will focus on performance, applied skills, analysis and evaluation procedures of an entry level technician 2. Prerequisite: AMT 294 with a grade of 'C' or better.

Art

ART 131 Intro to Drawing

A studio experience exploring basic drawing techniques, materials, and concepts while addressing historical and contemporary issues. A conceptual framework for critical analysis is presented along with basic art theory. College-level reading comprehension is recommended. You will be expected to purchase materials for this course based on a list provided by the instructor. Material costs will be approximately \$110 or less. May not be taken concurrently with ART 231.

ART 213 Mod Art Hist - Art Since 1945

World War II ended the supremacy of Europe in the visual art world and focused attention on America. Course examines and analyzes art since 1945 to explore the ideas behind it, reveal our culture and values, and to gain a greater understanding and appreciation of contemporary art. Recommended: WRI 121Z placement.

ART 284 Watercolor I

Includes lectures, demonstrations, films, slides and specific problems dealing with color relationships, composition, and watercolor techniques. Explores different ways of seeing and painting to become more visually literate. Examines basic watercolor techniques and materials. Presents the conceptual framework for critical analysis, along with basic theories of art in the historical context. You will be expected to purchase materials for this course based on a list provided by the instructor. Material costs will be approximately \$100.

Aviation

AVS 100 Intro to Aviation

This course examines aviation from early flight to future potentials. Introduces career opportunities in all fields of aviation and outlines career advancement possibilities. Provides general overview of pilot certificates and ratings and training aircraft used.

AVS 105 Aviation Fundamentals

Covers the basic fundamentals of aircraft aerodynamics, aircraft performance, and aviation meteorology with emphasis on Air Traffic Control (ATC) procedures, pilot communication, and the National Airspace System (NAS).

AVS 111F Private Pilot I Flight - Helicopter

Flight segment of AVS 111G. Corequisite: AVS 111G.

AVS 111G Private Pilot I: Helicopter

This course teaches the basic knowledge and techniques required to achieve solo helicopter flight as part of achieving your FAA Private Pilot Rotorcraft - Helicopter Certificate. Prerequisites: FAA Class II Medical, Duty Weight <240 lbs. Corequisite: AVS 111F.

AVS 112F Private Pilot I Flight - Airplane

Flight segment of AVS 112G. Prerequisites: FAA Class II Medical, Corequisite: AVS 112G.

AVS 112G Private Pilot I - Airplane

This course teaches the basic knowledge and techniques required to achieve solo airplane flight as part of achieving the FAA Private Pilot Airplane - Single Engine Land Certificate. Recommended: AVS 105 taken concurrently with this course. Prerequisites: FAA Class II Medical. Corequisite: AVS 112F.

AVS 116F Private Pilot II Flight - Helicopter

Flight segment of AVS 116G. Corequisite: AVS 116G.

AVS 116G Private Pilot II - Helicopter

This course teaches the advanced knowledge and techniques required to pass the FAA Knowledge Test and Practical Check-Ride to achieve the FAA Private Pilot Rotorcraft - Helicopter Certificate. Prerequisites: AVS 111G and AVS 111F with a grade of 'C' or better, FAA Class II Medical, Duty Weight <240 lbs. Corequisite: AVS 116F.

AVS 117F Private Pilot II Flight - Airplane

Flight segment of AVS 117G. Prerequisites: AVS 112F and AVS 112G with a grade of 'C' or better, FAA Class II Medical, Corequisite: AVS 117G.

AVS 117G Private Pilot II - Airplane

This course teaches the advanced knowledge and techniques required to pass the FAA Knowledge Test and Practical Check-Ride to achieve the FAA Private Pilot Airplane - Single Engine Land Certificate. Prerequisites: AVS 112F and AVS 112G with a 'C' or better, FAA Class II Medical, Corequisite: AVS 117F.

AVS 125 Aircraft Systems: Powerplant

This course is designed to give students the background in aircraft systems and structures, with an emphasis on powerplant components that will enable them to progress into more advanced aircraft. Provides understanding of the safe and efficient operation of aircraft systems.

AVS 130 History of Aviation

This course will explore the history of aviation from its origins to the present day. It examines the milestones of flight, aviation pioneers, development of aircraft, the evolution of airliners, jets, and rotary-wing aircraft, and developments in manned space travel. The course will survey the scientific, political, military, socioeconomic, and cultural impacts on aviation.

AVS 150 Meteorology I

This is a survey course in atmospheric science that covers weather basics and atmospheric circulations. Included is a systematic development of the following: the atmosphere, energy and temperature, wind, atmospheric moisture, horizontal and vertical pressure patterns, clouds, atmospheric circulation, stability, air masses, fronts, fog, icing, thunderstorms, jet streams, and turbulence. Students will study surface weather observations, routine weather reports and forecasts, surface maps, and constant pressure maps.

AVS 200F Instrument Flight - Helicopter

Flight segment of AVS 200G. Corequisite: AVS 200G.

AVS 200G Instrument - Helicopter

The student will obtain the knowledge, skills, and aeronautical experience necessary to meet the requirements for an Instrument Rating (Rotorcraft - Helicopter). Covers fundamentals of instrument flight, operation, use and limitations of flight instruments, aircraft performance, aeronautical publications, Federal Aviation Regulations, instrument navigation, flight planning, radio procedures, weather, and all topics in accordance with Federal Aviation Regulation. Corequisite: AVS 200F.

AVS 202F Instrument Flight- Airplane

Flight segment of AVS 202G. Corequisite: AVS 202G.

AVS 202G Instrument- Airplane

The student will obtain the knowledge, skills, and aeronautical experience necessary to meet the requirements for an Instrument Rating (Airplane - Single Engine Land). Covers fundamentals of instrument flight, operation, use and limitations of flight instruments, aircraft performance, aeronautical publications, Federal Aviation Regulations, instrument navigation, flight planning, radio procedures, weather, and all topics in accordance with Federal Aviation Regulation. Corequisite: AVS 202F.

AVS 205F Commercial Flight- Helicopter

Flight segment of AVS 205G. Corequisite: AVS 205G.

AVS 205G Commercial- Helicopter

The student will obtain the knowledge, skills, and aeronautical experience necessary to meet the requirements for a Commercial Pilot Certificate (Rotorcraft - Helicopter). Includes in depth study of aerodynamic systems, performance, aeronautical charts, and regulations. Focus on helicopter flight maneuvers, cross-country flight procedures, and emergency maneuvers. Includes all solo requirements. Corequisite: AVS 205F.

AVS 207F Commercial Flight- Airplane

Flight segment of AVS 207G. Prerequisite: Be at least 18 years of age at time of FAA check flight, hold at least a first or second-class medical certificate valid for at least second-class privileges, and a Private Pilot Airplane (SEL) Certificate. Duty weight <240 lbs. Corequisite: AVS 207G.

AVS 207G Commercial - Airplane

The student will obtain the knowledge, skills, and aeronautical experience necessary to meet the requirements for a Commercial Pilot Certificate (Airplane - Single Engine Land). Includes in-depth study of single engine aerodynamics, complex aircraft operations, propeller feathering, V-speeds, human factors, crew resource management, and FAA regulations for commercial pilots. Focus on airplane flight maneuvers, cross-country flight procedures, one engine inoperative, and emergency maneuvers. Includes all solo requirements. Corequisite: AVS 207F.

AVS 210F Cert Flight Instructor Flight- Helicopter

Flight segment of AVS 210G. Corequisite: AVS 210G.

AVS 210G Cert Flight Instructor- Helicopter

The student will acquire the instructional knowledge, understanding, and skill necessary to teach and analyze maneuvers and procedures to meet the requirements for a Flight Instructor Certificate (Rotorcraft - Helicopter). The course includes flight instruction, fundamentals, evaluation techniques, and related skills necessary. Provides a structured environment to learn to teach and evaluate students to achieve a Private Pilot and Commercial Pilot certificate in compliance with Federal Aviation Administration Standards. Corequisite: AVS 210F.

AVS 212F Cert Flight Instructor Flight- Airplane

Flight segment of AVS 212G. Corequisite: AVS 212G.

AVS 212G Cert Flight Instructor- Airplane

The student will acquire the instructional knowledge, understanding, and skill necessary to teach and analyze maneuvers and procedures to meet the requirements for a Flight Instructor Certificate (Airplane - Single Engine Land). The course includes flight instruction, fundamentals, evaluation techniques, and related skills necessary. Provides a structured environment to learn to teach and evaluate students to achieve a Private Pilot and Commercial Pilot certificate in compliance with Federal Aviation Administration Standards. Corequisite: AVS 212F.

AVS 215F Cert Flight Instructor Instrument Flight- Helicopter

Flight segment of AVS 215G. Corequisite: AVS 215G.

AVS 215G Cert Flight Instructor Instrument- Helicopter

The student will acquire the instructional knowledge, understanding, and experience necessary to meet the requirements for a Flight Instructor Instrument Rating (Rotorcraft - Helicopter). The course includes flight instruction, fundamentals, evaluation techniques, and related skills necessary. Provides a structured environment to learn to teach and evaluate students to achieve an instrument rating in a helicopter in compliance with Federal Aviation Administration standards. Corequisite: AVS 215F.

AVS 217F Cert FI Instructor Instrument Flight- Airplane

Flight segment of AVS 217G. Corequisite: AVS 217G.

AVS 217G Cert FI Instructor Instrument- Airplane

The student will acquire the instructional knowledge, understanding, and experience necessary to meet the requirements for a Flight Instructor Instrument Rating (Airplane ? Single Engine Land). The course includes flight instruction, fundamentals, evaluation techniques, and related skills necessary. Provides a structured environment to learn to teach and evaluate students to achieve an instrument rating in an airplane in compliance with Federal Aviation Administration standards. Corequisite: AVS 217F.

AVS 222 Multi-engine Instructor - Airplane

The student will acquire the instructional knowledge, understanding, and skill necessary to teach and analyze maneuvers and procedures to meet the requirements for a Multi-engine Instructor (Airplane - Multi-engine Land). The course includes flight instruction, fundamentals, evaluation techniques, and related skills necessary. Provides a structured environment to learn to teach and evaluate students to achieve a Commercial Pilot Multi-engine Land rating in compliance with Federal Aviation Administration Standards. Prerequisites: Be at least 18 years of age at time of FAA check flight, hold at least a first or second-class medical certificate that is valid for second-class privileges, hold an Unrestricted Commercial Pilot Certificate, Airplane MEL or an Airline Transport Pilot Certificate, Airplane MEL, an Instrument Rating or privilege, Airplane, and a Flight Instructor Certificate.

AVS 223 Multi-engine - Airplane

The student will acquire the knowledge, understanding, and skills necessary to meet the requirements for a Multi-engine Land and instructional knowledge to teach and analyze maneuvers and procedures necessary to meet the requirements of Multi-engine Instructor. The course includes the flight instruction, fundamentals, and evaluation techniques for successful completion and provides a structured environment to learn to achieve a Commercial Pilot Multi-engine Land and teach and evaluate students to achieve Multi-engine Instructor in compliance with Federal Aviation Administration Standards. Prerequisites: Be at least 18 years of age at time of FAA check flight, hold at least a first or second-class medical certificate that is valid for second-class privileges, hold an Unrestricted Commercial Pilot Certificate, or an Airline Transport Pilot Certificate, an Airplane Instrument Rating or privilege, and an Airplane Flight Instructor Certificate.

AVS 251 Aviation Law & Regulations

This course explores the applicable federal aviation regulations through case law and current events. The FAA's role in the development and regulation of the industry is examined. Covers how to reference, interpret, and explain aviation law and regulations.

AVS 254 Aviation Safety

This course offers a detailed introduction into aspects of aviation safety intended to promote flight safety in the general aviation and training environment. Topics will include risk management, pilot psychology, human factors, accident trends, and analysis of accident reports.

Biology**BIO 102 Biology II**

A laboratory science course designed for non-biology majors. Presents protein syntheses, cell divisions, animal reproduction, genetics, embryology and the basic doctrines of evolution. Prerequisites: MTH 070 or MTH 095 or MTH 111Z or placement into MTH 095 or MTH 111Z and WRI 095 or WRI 121Z or placement into WRI 121Z. Corequisite: BIO 102L.

BIO 102L Bio II Lab

Laboratory activities relating to BIO 102. Corequisite: BIO 102.

BIO 103 Biology III

A laboratory science course designed for non-biology majors. Presents the evolutionary relationships among the five kingdoms and their major phyla. The last half of this term covers human systems. Corequisite: BIO 103L.

BIO 103L Bio III Lab

Laboratory activities relating to BIO 103. Corequisite: BIO 103.

BIO 112 Integrated Chemistry and Cell Biology for Health Occupations

Introduces basic concepts of matter, atoms, compounds, intermolecular forces, solutions, pH, biomolecules, cell chemistry, cell structure and function, cell reproduction, and genetics. Concepts covered are applied to health-related problems. Recommended: MTH 070 or MTH 095 or MTH 111Z or placement into MTH 070. Corequisite: BIO 112L.

BIO 112L Integrated Chemistry and Cell Biology for Health Occupations Lab

Laboratory activities relating to BIO 112. Corequisite: BIO 112.

BIO 223Z Principles of Biology: Ecology and Evolution

Explores the unity and diversity of life through evolutionary mechanisms and relationships, and adaptation to the environment. Examines population, community, and ecosystem ecology. Intended for science majors.

BIO 231 Anatomy & Physiology I

First term of a three-term sequence covering chemistry, cells, tissues, and the skin, skeletal, and muscular systems. Laboratory experiences will be used to elaborate on concepts presented in lecture. Prerequisites: BIO 112 and BIO 112L. Corequisite: BIO 231L.

BIO 231L Anatomy & Physiology I Lab

Laboratory activities relating to BIO 231. Corequisite: BIO 231.

BIO 232 Anatomy & Physiology II

Second term of a three-term sequence. Courses may not be taken out of sequence. Covers nervous, endocrine, cardiovascular, and immune systems. Laboratory experiences will be used to elaborate on concepts and presented in lecture. Prerequisite: BIO 231. Corequisite: BIO 232L.

BIO 232L Anatomy & Phys II Lab

Laboratory activities relating to BIO 232. Corequisite: BIO 232.

BIO 233 Anatomy & Physiology III

Third term of a three-term sequence. Courses may not be taken out of sequence. Covers digestive, respiratory, urinary, and reproductive systems, fluid and electrolyte balance, metabolism, embryology, and genetics. Laboratory experiences will be used to elaborate on concepts presented in lecture. Prerequisite: BIO 232. Corequisite: BIO 233L.

BIO 233L Anatomy & Phys III Lab

Laboratory activities relating to BIO 233. Corequisite: BIO 233.

BIO 234 Microbiology I

Lecture, recitation, and laboratory will cover: Bacterial genetic recombination; bacterial, viral and parasitic relationships with human health and disease; immune system and allergy; water and sewage treatment; soil microbes; and microbiology of foods. Laboratory stresses aseptic technique, bacterial identification and physiology using a variety of media, culturing techniques, and staining techniques. Prerequisites: MTH 095 and WRI 095. Corequisite: BIO 234L.

BIO 234L Microbiology I Lab

Laboratory activities relating to BIO 234. Corequisite: BIO 234.

**Looking for course dates, times,
or instructors?
Check [www.klamathcc.edu/classes!](http://www.klamathcc.edu/classes)**

Business**BUS 101Z Introduction to Business**

Presents an integrated view of both established and entrepreneurial businesses by studying their common characteristics and processes in a global context. Introduces theory and develops basic skills in the areas of accounting, finance, management, and marketing, with an emphasis on social responsibility and ethical practices. Explores how businesses can create value for themselves and society by addressing environmental and social changes.

BUS 111 Intro to Accounting

Presents double-entry accounting as related to service businesses. Provides an understanding of the accounting cycle, debits and credits, and financial statements for these businesses. Also introduces journalizing and posting to the general ledger.

BUS 169Z Data Analysis Using Microsoft Excel

Covers Microsoft Excel software skills necessary for evidence-based problem-solving, including workbook editing, formula creation, charting, and pivot tables. Emphasizes hands-on learning using Excel functions to perform data analysis to enhance decision-making. Recommended: CAS 133 and MTH 020 or MTH 070 or MTH 095 or MTH 111Z or placement into MTH 070.

BUS 177 Payroll Accounting

Provides the fundamental skills needed to prepare a business payroll. Introduces payroll and personnel recordkeeping, calculation of pay, payroll journalizing, regulations covering Social Security, withholding, and unemployment. Prerequisites: BUS 111 or BUS 211 with a grade of 'C' or better and BUS 169Z with a grade of 'C' or better.

BUS 178 Customer Service Fundamentals

This course focuses on the skills necessary to deliver exceptional customer service in a retail or service business or organization. Topics will include developing communication skills and an attitude of service, enhancing customer relationships, dealing with difficult customers, active listening and problem solving to address customer needs, and strategies to remain self-motivated in the service industry.

BUS 206 Management Fundamentals

A study of the basic management and organizational principles within business entities. Introduces the concepts of planning, organizing, leading, control, implementation of change, ethical behavior, and corporate culture. Provides opportunities for students to apply concepts to actual workplace scenarios and evaluate impact on global business activities.

BUS 213Z Principles of Managerial Accounting

Builds an understanding of the role of managerial accounting in a business, focusing on the development and use of information to evaluate production costs and operational performance in support of short- and long-term organizational decision-making. Prerequisites: BUS 211Z with a grade of 'C' or better.

BUS 214 Business Communication

This course covers concepts and skills necessary to communicate in today's constantly changing business environment. Students will learn how to create a wide range of business documents and oral presentations, addressing the needs of diverse audiences, and ethical implications of the communication process. Instructor approval may be obtained if a student has not met the WRI 121Z prerequisite. Prerequisites: CAS 133 and WRI 121Z.

BUS 218 Personal Finance

Studies the role of the consumer in the economy and addresses problems of financing individual and family needs, including budgeting, banking relationships, charge accounts, installment buying, insurance, wills, real estate investing, and personal taxes. Recommended: Placement into MTH 070.

BUS 223 Principles of Marketing

Study and analysis of the elements of marketing and marketing strategy, stressing product development, policies, pricing strategies, promotion, distribution, international markets, and consumer behavior. Emphasis on the elements of the marketing mix and target markets for consumer and industrial markets.

BUS 224 Human Resource Management

Explores the management of human behavior in the workplace, including employment, employee development, performance appraisals, wage and salary administration, employee rights, discipline and due process, and labor-management relations. Prerequisite: WRI 121Z.

BUS 226Z Introduction to Business Law

Provides a comprehensive overview of U.S. business law, including the legal system, contracts, torts, intellectual property, agency, employment, and business organization forms. Emphasizes practical legal knowledge and explores how laws impact business operations, with a focus on risk management, contract disputes, business formation, and compliance with government regulation. Introduces legal challenges in business through real cases and legal terminology. Prerequisite: WRI 121.

BUS 228 Computer Accounting Applications

Covers use of integrated, computer-based accounting programs. Includes general ledger, accounts receivable, accounts payable, and payroll. Prerequisite: BUS 211Z with a grade of "C" or better.

BUSINESS TECHNOLOGY

The Business Technology program options allow students to meet their career goals whether related to job-entry preparation, job advancement, or college transfer. The program provides a strong foundation of technology skills and courses in business. The program includes industry standard computer programs.



Scan for More Info

BUS 230 Applied Knowledge and Skills for HR Professionals

This course provides an opportunity to integrate content from student experience in HR topics with real-world scenarios in an HR environment. Best practices related to talent acquisition, employee performance and development, compensation and benefits, and retention will be reviewed, with a focus on the use of technology throughout these HR functions. HR's impact on organizational design and the promotion of a healthy, ethical workplace will be explored, and strategies that support both the organizational goals and the employees will be identified. Prerequisites, BUS 224 with a grade of 'C' or better, BUS 226Z with a grade of "C" or better.

BUS 231 Exam Prep: SHRM-CP

This class will help prepare students for the SHRM Certified Professional (SHRM-CP) exam offered by the Society for Human Resource Management (SHRM). Students will review the critical competencies identified in the SHRM Body of Applied Skills and Knowledge (SHRM BASK). Students will complete practice exams throughout the class to prepare for the SHRM-CP exam. The SHRM-CP exam is offered at Prometric Test Centers during specified testing windows (see the SHRM website for details). Course fees may be included to cover the cost of a one-year membership with SHRM and the cost of the exam; see your faculty for details. Corequisite: Concurrent enrollment or prior completion of BUS 230.

BUS 233 Social Media Marketing

This course explores principles and technologies related to Internet marketing as part of an organization's overall marketing strategy. Common social media tools such as Facebook, Twitter, YouTube, and others will be utilized as resources to connect with customers and improve business performance.

BUS 249 Retailing

Covers the selection of target markets and retail strategies, including store planning techniques used by retailers. Includes discussion of the changing retailing environment and the impact of government regulations.

BUS 280 Coop Wk Exp: Business, Accounting, or Business Tech

On-the-job, paid or volunteer, experiences which allow for the application and development of knowledge, skills, and attitudes learned through the on-campus program so that the student can learn various functional aspects of the industry. Cooperative work experience is offered for variable credit based on the student's objectives. Instructor permission is required prior to registering and the student must locate a job site for the course. Recommended: Completion of TEX 280 or co-enrollment during same term.

Computer Applications

CAS 121 Beginning Keyboarding

Students will learn to key the alphabetic portion of the computer keyboard by touch, develop or refine basic keyboarding techniques, and increase speed and accuracy.

CAS 122 Keyboarding for Speed & Accuracy

Students will refine keyboarding technique, increase speed, and improve accuracy through corrective practice. Recommended: Ability to touch type (defined as using the correct key reaches and not looking at keys while typing) at a minimum rate of 20 wpm.

CAS 133 Intro to Computing Skills

Provides hands-on experience with Microsoft Office software fundamentals, including Word, PowerPoint, and Excel. Includes concepts of computer operations and literacy as well as insight into the broad impact of computers on today's society. Students should have a basic working knowledge of general computer use prior to enrollment. Recommended: WRI 095 and keyboarding by touch. Corequisite: CAS 133L.

CAS 133L Intro to Computing Skills Lab

Laboratory activities relating to CAS 133. Corequisite: CAS 133.

CAS 247 Advanced Business Applications

This course emphasizes the practical application of office software to create professional business documents and presentations. Focus is on establishing a professional tone in the office environment through skilled use of communication with customers and professional clients. Techniques for dealing with office conflict and handling multiple priorities are also reinforced. Recommended: Successful completion of BUS 169Z and CAS 216. Prerequisite: CAS 245. Corequisite: CAS 247L.

CAS 247L Advanced Business Applications Lab

Laboratory activities relating to CAS 247. Corequisite: CAS 247.

College Survival & Success

CGS 100 College Survival & Success

The purpose of this course is to help the student become a more effective learner. This course will cover college terms and information, class choice, degree requirements, etc. Helps new or returning students make personal and social adjustments for college success.

CGS 112 Career Exploration & Planning

This course will help students explore career options utilizing employment and community resources plus online job search resources. Interviewing skills will be stressed with mock interviews.

Chemistry

CHE 104 General Chemistry I

Includes general principles of chemistry, including atomic structure, mole concept, chemical reactions stoichiometry, and gas laws. Prerequisites: MTH 095 or MTH 111Z or placement into MTH 111Z and WRI 121Z. Corequisite: CHE 104L.

CHE 104L Gen Chem I Lab

Laboratory activities relating to CHE 104. Corequisite: CHE 104.

CHE 223Z General Chemistry III

Builds upon the principles presented in CHE 222Z, explores thermodynamics and chemical equilibrium, and applies them to the study of aqueous acid-base reactions, solubility, and electrochemistry. CHE 223Z is a lecture course; CHE 229Z is the laboratory component. Prerequisite: CHE 222Z. Corequisite: CHE 229Z.

CHE 229Z General Chemistry III Laboratory

Experiments correspond to the topics covered in CHE 223Z including the principles of chemical equilibria and their application to chemical analysis using volumetric and electrochemical methods. CHE 229Z is the laboratory component; CHE 223Z is the lecture course. Corequisite: CHE 223Z.

Computer Information Systems

CIS 120 Embedded C

C programming concepts for embedded platforms such as cross-compilation, storage classes, dynamic memory allocation, bitwise operations and masking. Embedded systems topics such as I/O ports, interrupts, timers, and hardware interfacing will also be explored. Prerequisite: CIS 116 with a grade of "C" or better. Corequisite: CIS 120L.

CIS 120L Embedded C Lab

Laboratory activities relating to CIS 120. Corequisite: CIS 120.

CIS 131 Computer Architecture

A continuation of CIS 130. Topics include main memory, cache, virtual memory, memory management, secondary storage, networks, operating system function, and pipelining. Prerequisite: CIS 130 with a grade of "C" or better.

CIS 136 Object Oriented Programming with C++

A study of object-oriented programming with C++. Beginning and intermediate concepts are covered including classes, objects, member functions, overloading, inheritance, polymorphism, templates, and virtual functions. This course prepares students with a strong C background for upper division coursework using C++. Prerequisites: CIS 126 with a grade of "C" or better. Corequisite: CIS 136L.

CIS 136L Object Oriented Programming with C++ Lab

Laboratory activities relating to CIS 136. Corequisite: CIS 136.

CIS 142 Introduction to Programming C#

An introduction to basic computer programming concepts in the C# programming language. Topics include algorithms, simple data types, conditional and iterative structures, functions and procedures, and code documentation. Corequisite: CIS 142L.

CIS 142L Introduction to Programming C# Lab

Laboratory activities relating to CIS 142. Corequisite: CIS 142.

CIS 153 Scaling Networks

Students will work with routers and switches using OSPF, EIGRP, and STP protocols in both IPv4 and IPv6 networks and learn to resolve common VLAN routing issues in both IPv4 and IPv6 networks. Configuring WAN technologies and network services required by converged applications in a complex network will be covered in this course. This is the third course in a 4-course series. Prerequisite: CIS 152 with a grade of 'C' or better. Corequisite: CIS 153L.

CIS 153L Scaling Networks Lab

Laboratory activities relating to CIS 153. Corequisite: CIS 153.

CIS 180 Industry Certification

Independent study test preparation for industry certification exams. Students will meet with the instructor to discuss practice test resources and test taking strategies. Instructor permission is required and the student must take an industry certification exam before the end of the term. Prerequisites: CIS 146 with a grade of 'C' or better and CIS 152 with a grade of 'C' or better.

CIS 181J CMS Website Creation

Introduces the creation of sophisticated, dynamic, interactive and fully functional websites using a content management system (CMS). Includes setting up a website in both a local and remote server environment, working with templates, creating efficient site navigation using menus, organizing a site using components and modules, enhancing a site with plugins and extensions, and creating user functionality with user logins. Corequisite: CIS 181JL.

CIS 181JL CMS Website Creation Lab

Laboratory activities related to CIS 181J. Corequisite: CIS 181J.

CIS 196 Intermed/Adv Web Development - HTML5

This course builds upon basic manual coding skills from CIS 195 and teaches how to develop web documents using new elements, attributes and selectors introduced in HTML5 (Hypertext Markup Language version 5) and CSS3 (Cascading Style Sheets version 3). Students learn to create web pages using the HTML5 structure elements, embed video and audio, and develop cross-browser user-input forms. Use CSS3 to position and format content, and to create effects such as transformations, transitions and animation. Students also learn basic JavaScript coding, and use HTML5 APIs (application programming interfaces) to extend the functionality of web pages with modern features such as geolocation, drag-and-drop, canvas and offline web applications. Corequisite: CIS 196L.

CIS 196L Intermed/Adv Web Dev - HTML5 Lab

Laboratory activities relating to CIS 196. Corequisite: CIS 196.

CIS 206 Intro to Information Technology

This course introduces the key components found in modern business information systems, including both the major hardware components of today's network and primary categories of software applications used to support knowledge workers. Data resource management concepts are developed to provide the student with a high level picture of how the elements of an information system work together to solve problems and support business opportunities. Business ethics relating to the use of information systems is explored for local and global firms. Corequisite: CIS 206L.

CIS 206L Intro to Information Technology Lab

Laboratory activities relating to CIS 206. Corequisite: CIS 206.

CIS 243 E-Commerce

This foundational course in electronic commerce covers topics such as online selling and marketing, Business-to-Business (B2B) and Business-to-Consumer (B2C) activities, applying social networks, legal and tax issues, web servers, security, and third-party payment systems.

ASSOCIATE OF APPLIED SCIENCE OR 1-YR CERTIFICATE

COMPUTER ENGINEERING TECHNOLOGY



100% ONLINE
(OR A COMBINATION OF
ONLINE & CLASSROOM)



CAREERS

- Junior Software Developer
- Software Developer I
- IT Service Desk Technician

KCC to OIT
BACHELOR OF SCIENCE
PATHWAY DEGREE TRANSFER

APPLY NOW: [HTTPS://WWW.KLAMATHCC.EDU/CET](https://www.klamathcc.edu/cet)

CIS 250 Assembly Programming

Concepts of assembly language programming applied to a modern computer; data and instruction formats, address generation; data definition, storage allocation and program control statements; sub-routine library; CPU instruction set; control records; and writing of sub-routines. Prerequisites: CIS 126 with a grade of 'C' or better and CIS 130 with a grade of 'C' or better. Corequisite: CIS 250L.

CIS 250L Assembly Programming Lab

Concepts of assembly language programming applied to a modern computer; data and instruction formats, address generation; data definition, storage allocation and program control statements; sub-routine library; CPU instruction set; control records; and writing of sub-routines. Corequisite: CIS 250.

CIS 275 Database I

Reviews Structured Query Language (SQL). Focuses on relational database design, transaction management, distributed database systems, and data warehousing. Typical databases used in e-commerce and database administration are also presented. Corequisite: CIS 275L.

CIS 275L Database I Lab

Laboratory activities relating to CIS 275. Corequisite: CIS 275.

CIS 280 Coop Wk Exp: Computer Technology Engineer

On-the-job, paid or volunteer, experiences which allow for the application and development of knowledge, skills, and attitudes learned through the on-campus program so that the student can learn all aspects of the industry. Cooperative work experience is offered for variable credit based on the student's objectives. Instructor permission is required and the student must locate a job site for the course. Prerequisites: CIS 146 and CIS 152 with a grade of 'C' or better.

CIS 285 Cybersecurity Operations

The course focuses on how to monitor, detect and respond to cybersecurity threats. Students will study cryptography, host-based security analysis, security monitoring, computer forensics, attack methods and incident reporting and handling. This course helps prepare students for taking the CCNA Cyber Ops Certification. Prerequisites: CIS 146 and CIS 152 with a grade of 'C' or better. Corequisite: CIS 285L.

CIS 285L Cybersecurity Operations Lab

Laboratory activities relating to CIS 285. Corequisite: CIS 285.

CIS 286 Ethical Hacking

Students will be taught the ethical use of various 'white hat' cyber penetration testing tools and techniques consistent with ethical hacking training. Students will be exposed to various computer hacking skills and analyze various protective measures and their effectiveness. Prerequisite: CIS 153 with a grade of 'C' or better. Corequisite: CIS 286L.

CIS 286L Ethical Hacking Lab

Laboratory activities relating to CIS 286. Corequisite: CIS 286.

CIS 297 Capstone

Requires students to apply responsive design and create a portfolio website project while using industry standard software and technical tools. Includes planning, production, project review, and peer critiques. Includes completion of an online portfolio that show cases coursework artifacts from all completed courses. Requires the development of a self-marketing statement emphasizing the student's career focus

Criminal Justice

CJA 101 Intro to Criminal Justice & Human Services Careers

This course is designed to help students become aware of career and education options in human services and criminal justice. Students attending this course will become familiar with the educational requirements, lifestyle considerations, application processes, training, certification requirements, and career opportunities in the fields of criminal justice and human services. Students will solidify their academic plan and prepare a personal career plan based on their goals. There are no prerequisites for this course. Students are strongly encouraged to take this course concurrently or immediately after CGS 100.

CJA 113 Intro to Criminal Justice Systems - Corrections

Overview of the theories and current practices in corrections, crime prevention, offender services, treatment methods, and career opportunities.

CJA 212 Criminal Law

Covers the origin, structure and definitions of common law and statutory crimes, the Criminal Code of Oregon, and criminal court procedures. Students will participate in a mock trial. Recommended: CJA 111, CJA 112, and CJA 113. Prerequisites: WRI 121Z with a grade of 'C' or better.

CJA 217 Interviewing & Interrogation

Provides in-depth coverage of the theories and practices relevant to criminal justice interviewing and interrogation. Recommended: CJA 111, CJA 112, and CJA 113. Prerequisites: WRI 121Z with a grade of 'C' or better.

CJA 243 Narcotics & Dangerous Drugs

Provides an overview of the individual and social problems related to drug abuse and addiction. Topics covered include identification and treatment of drug abuse and addiction, the effects of various drugs of abuse, and an examination of the roles played by the criminal justice system with regard to drugs. Recommended: CJA 111, CJA 112, and CJA 113. Prerequisites: WRI 121Z with a grade of 'C' or better.

CJA 244 Introduction to Behavioral Health Crisis Services

Introduces students to the intersection of behavioral health services and criminal justice systems in urgent/emergent settings. Utilizes both a theoretical and practical base of knowledge allowing students to develop their skills during interventions with clients experiencing acute behavioral health symptoms. This course will extend their ability to assess the needs of the client and understand the resources available to them as they attempt to connect individuals to appropriate systems of care. The students will be provided basic information relative to mental health symptoms, substance abuse disorders, and other clusters of behavioral disturbances that can impact a client's functioning. The intent will be for them to understand the potential differences between each cluster of symptoms to assist with developing appropriate responses while interacting with their clients, as well as, engaging the appropriate systems of care. They will learn de-escalation skills, situation management, understanding of chronic mental illnesses, acute substance disorders, cognitive disorders, and developmental delays. They will gain an understanding of the crisis response system, civil commitment laws, and the role that law enforcement assists patients with behavioral health crisis situations. Recommended: CJA 111, CJA 112, and CJA 113. Prerequisites: WRI 121Z with a grade of 'C' or better.

CJA 280 Coop Wk Exp: Criminal Justice

On-the-job, paid or volunteer, experiences which allow for the application and development of knowledge, skills, and attitudes learned through the on-campus program so that the student can learn all aspects of the industry. Instructor permission is required and the student must locate a job site for the course.

Communications

COM 111M Public Speaking

COM 111M emphasizes developing communication skills by examining and demonstrating how self-awareness, audience, content, and occasion influence the creation and delivery of speeches and presentations. Prerequisite: WRI 121Z.

COM 111Z Public Speaking

COM 111Z emphasizes developing communication skills by examining and demonstrating how self-awareness, audience, content, and occasion influence the creation and delivery of speeches and presentations. Prerequisite: WRI 121Z.

COM 218Z Interpersonal Communication

COM 218Z increases the knowledge and use of competent communication skills to better understand oneself, others, and the role of communication in interpersonal relationships. Prerequisite: WRI 095 or WRI 117 or WRI 121Z or placement into WRI 121Z.

Cosmetology

COS 102 Oregon Laws and Rules

In this course students will gain knowledge of the laws and rules pertaining to cosmetology established by the Oregon Health Agency. Students will assess the laws and rules as they apply to the field of cosmetology. The course must be completed with a 75% or better.

COS 104 Salon Management

This course focuses on the understanding of the salon industry, basic business building techniques, professional relationships, salon ownership and salon retailing. The course must be completed with a 75% or better.

COS 105 Cosmetology Science

Students will gain a basic knowledge of structures and functions of the skin and muscles of the hand and feet, and gain an understanding of chemical elements, bonds, pH and cosmetics used in cosmetology. Students will study the principles of electricity as used in the field of cosmetology. The course must be completed with a 75% or better.

COS 111 Hair Design Theory I

This class focuses on the beginning background information necessary for Cosmetology students to prepare for Cosmetology clinic/lab sessions and to meet the requirements set forth by the Oregon Board of Cosmetology. Areas to be addressed include hair sculpture, associated tools and their usage and the four basic design forms to complete a woman's hair sculpture, and a men's planer combination form sculpture. The course must be completed with a 75% or better. Corequisite: COS 111L.

COS 111L Hair Design Theory I Lab

Pre-clinic lab sessions prepare students to meet the requirements set forth by the Oregon Board of Cosmetology. Areas to be addressed include hair design, shampooing, rinsing and conditioning, and haircutting for men and women. The course must be completed with a 75% or better. Corequisite: COS 111.

COS 112A Hair Design Theory II

This class focuses on the beginning background information necessary for Cosmetology students to prepare for Cosmetology clinic/lab sessions and to meet the requirements set forth by the Oregon Board of Cosmetology. Areas to be addressed include the properties of the scalp, and hair, and both wet and thermal styling. The course must be completed with a 75% or better. Corequisite: COS 111, COS 111L, and COS 112L.

COS 112B Hair Design Theory II for Barbers

This class focuses on the beginning background information necessary for Cosmetology students to prepare for Cosmetology (Barbering) clinic/lab sessions and to meet the requirements set forth by the Oregon Board of Cosmetology. Areas to be addressed include the properties of the scalp, and hair, and thermal styling. The course must be completed with a 75% or better. Corequisite: COS 111, COS 111L, and COS 112L.

COS 112L Hair Design Theory II Lab

Pre-Clinic lab sessions prepare students to meet the requirements set forth by the Oregon Board of Cosmetology. Areas to be addressed include hair design, shampooing, rinsing and conditioning, haircutting, and hairstyling. The course must be completed with a 75% or better. Corequisite: COS 111, COS 111L, and COS 112A or COS 112B.

COS 113 Hair Design Theory III

This class focuses on the beginning background information necessary for Cosmetology students to prepare for Cosmetology clinic/lab sessions and to meet the requirements set forth by the Oregon Board of Cosmetology. Areas to be addressed include basic and advanced perm wrapping patterns and relaxing techniques. The course must be completed with a 75% or better. Prerequisite: COS 112A with a grade of 'C' or better. Corequisite: COS 113L.

COS 113L Hair Design Theory III Lab

Pre-Clinic lab sessions prepare students to meet the requirements set forth by the Oregon Board of Cosmetology. Areas to be addressed include hair design, shampooing, rinsing and conditioning, haircutting, hairstyling, and chemical texture services. The course must be completed with a 75% or better. Prerequisite: COS 112A with a grade of 'C' or better. Corequisite: COS 113.

COS 114 Hair Design Theory IV

This class focuses on the beginning background information necessary for Cosmetology students to prepare for Cosmetology clinic/lab sessions and to meet the requirements set forth by the Oregon Board of Cosmetology. Areas to be addressed include basic all-over color design and color weaving services. The course must be completed with a 75% or better. Prerequisite: COS 113 with a grade of 'C' or better. Corequisite: COS 114L.

COS 114L Hair Design Theory IV Lab

Pre-Clinic lab sessions prepare students to meet the requirements set forth by the Oregon Board of Cosmetology. Areas to be addressed include hair design, shampooing, rinsing and conditioning, haircutting, hairstyling, chemical texture services and hair coloring. The course must be completed with a 75% or better. Prerequisite: COS 113 with a grade of 'C' or better. Corequisite: COS 114.

COS 115C Hair Design Clinical

Clinic-level lab sessions prepare students to meet the requirements set forth by the Oregon Board of Cosmetology. Areas to be addressed include, client relations, infection control, hair design, women's hair styling, shampooing, rinsing and conditioning, haircutting, and hairstyling. The course must be completed with a 75% or better. Prerequisite: COS 112A with a grade of 'C' or better.

COS 116C Hair Design Clinical

This course is a continuation of COS 115C. Clinic-level lab sessions prepare students to meet the requirements set forth by the Oregon Board of Cosmetology. Areas to be addressed include client relations, infection control, hair design, women's hair styling, shampooing, rinsing and conditioning, haircutting, hairstyling, chemical texture services, and specialty permanent waves. The course must be completed with a 75% or better. Prerequisite: COS 113 with a grade of 'C' or better.

COS 117C Hair Design Clinical

This course is a continuation of COS 115C and COS 116C. Clinic-level lab sessions prepare students to meet the requirements set forth by the Oregon Board of Cosmetology. Areas to be addressed include, client relations, infection control, hair design, women's hair styling, shampooing, rinsing and conditioning, haircutting, hairstyling, chemical texture services, specialty permanent waves, and hair coloring. The course must be completed with a 75% or better. Prerequisite: COS 114 with a grade of 'C' or better.

COS 121 Esthetics Theory

This course focuses on the beginning background information necessary for Esthetics students to prepare for participation in clinic/lab sessions and to meet requirements set forth by the Oregon Board of Cosmetology. Areas addressed include client relations, infection control, physiology and histology of the skin, skin-care products, ingredients and selection, skin analysis, basic facials, facial massage, temporary hair removal products and procedures, microdermabrasion, and the world of makeup. The course must be completed with a 75% or better. Corequisite: COS 121L.

COS 121L Esthetics Theory Lab

These pre-clinic sessions prepare the students to meet the requirements set forth by the Oregon Board of Cosmetology. Areas addressed include client relations, infection control, skin analysis, facials, massage, makeup, temporary hair removal, microdermabrasion, and makeup application. The course must be completed with a 75% or better. Corequisite: COS 121.

COS 122C Esthetics Clinic II

Clinic-level lab sessions prepare students to meet the requirements set forth by the Oregon Board of Cosmetology. Areas to be addressed include client relations, infection control, skin analysis, facials, massage, makeup, temporary hair removal, and makeup application. The course must be completed with a 75% or better. Prerequisite: COS 121 with a grade of 'C' or better.

COS 131 Nail Tech Theory

This course focuses on the beginning background information necessary for Nail Technology students to prepare for participation in clinic/lab sessions and to meet requirements set forth by the Oregon Board of Cosmetology. Areas addressed include nail structure and growth, manicuring, pedicuring, nail tips, wraps and nail art. The course must be completed with a 75% or better. Corequisite: COS 131L.

COS 131L Nail Tech Theory Lab

These pre-clinic sessions prepare the students to meet the requirements set forth by the Oregon Board of Cosmetology. Areas addressed include client relations, infection control, manicures, pedicures, nail enhancements and nail art. The course must be completed with a 75% or better. Corequisite: COS 131.

COS 132C Nail Tech Clinic II

Clinic-level lab sessions prepare students to meet the requirements set forth by the Oregon Board of Cosmetology. Areas to be addressed include client relations, infection control, manicures, pedicures, nail enhancements and nail art. The course must be completed with a 75% or better. Prerequisite: COS 131 with a grade of 'C' or better.

COS 142C Barbering Clinic II

Clinic-level lab sessions prepare students to meet the requirements set forth by the Oregon Board of Cosmetology. Areas to be addressed include, client relations, infection control, barbering sculpture, hair design, shaving, facial hair design, shampoo and conditioning treatments. The course must be completed with a 75% or better. Prerequisite: COS 141 with a grade of 'C' or better.

Diesel Technology**DST 115 Diesel HVAC Systems**

This course provides the basic theory and operating characteristics of heavy-duty diesel refrigeration systems required for successful completion of ASE area T7 Med/Heavy Truck: Heating and Air Conditioning and the 609 Federal Refrigeration Test. Instructional focus includes: safety precautions, environmental concerns, tooling, system identification, principles of refrigeration, states of matter, effects of pressure on gases and vapors, pressure-temperature relationships, basic refrigeration cycle, refrigerant types, refrigeration system components and cooling system components. Laboratory work includes proper handling of refrigerants, troubleshooting and basic servicing of these systems utilizing strategy-based diagnostics required for contemporary service of heavy-duty diesel HVAC systems. Corequisite: Verifiable registration/attempted testing of ASE area T7 Med/Heavy Truck: Heating and Air Conditioning. Corequisite: Successful completion of Federal Refrigeration Test is mandatory.

DST 135 Engine Theory & Service - Diesel

Basic theory and operating characteristics of heavy-duty truck diesel engines and related systems required for successful completion of ASE areas T2 Medium/Heavy Truck: Diesel Engine Repair. Lubrication and cooling systems, sealing materials, high performance theory, and diesel engine systems diagnosis.

Early Childhood Education**ECE 101 Child, Family, Community**

The study of influences on children and families which impact child and family behaviors, values, attitudes, beliefs, and morals. Topics include parenting patterns, cultural, religious and socioeconomic influences, peer, school, media impacts, community ecology, and public policy.

ECE 103 Assessment & Evaluation

Students will develop knowledge and skills in observing and assessing growth and behavior of children and the adult roles in supporting children's development. The student will examine the importance of developmentally appropriate practices, assessment and documentation. Students will learn and apply observation techniques. Students are required to spend additional time outside of class observing children in individual and group settings. Prerequisite: PSY 235.

ECE 160 Early Childhood Practicum: Seminar

Provides supervised teaching of students in a school or community setting, applying what has been learned through coursework and other educational experiences. Departmental permission required. Prerequisite: All students must successfully pass a criminal background check and vaccination verification. Prior study in ECE. Corequisite: ECE 162.

ECE 162 Early Childhood Practicum

Provides supervised teaching of students in a school or community setting, applying what has been learned through coursework and other educational experiences. Departmental permission required. Prerequisite: All students must successfully pass a criminal background check and vaccination verification. Prior study in ECE. Corequisite: ECE 160.

ECE 200 The Professional in Early Childhood Education

History, current programs and practices, and future issues of early-childhood education. Includes professionalism, historic and current issues, types of programs for young children, parent interaction, job opportunities, ethical/legal issues and community resources. Develops a professional philosophy.

ECE 275 Anti-Bias Curriculum

Explores the role of adults in helping children respect, appreciate, and interact positively with others who are different from them. Emphasizes the importance of accepting diversity while upholding values of equity, inclusion, and social justice. Current practices are examined to promote an inclusive community within the classroom. Emphasizes the vital role of families as partners in supporting children's development of these essential skills.

ECE 280 Coop Wk Exp: Early Childhood Education

On-the-job, paid or volunteer, experiences which allow for the application and development of knowledge, skills, and attitudes learned through the on-campus program so that the student can learn all aspects of the industry. Cooperative work experience is offered for variable credit based on the student's objectives. Instructor permission is required and the student must locate a job site for the course. All students must successfully pass a criminal background check.

Economics**ECO 201Z Principles of Microeconomics**

Examines how consumers and firms make choices when facing scarce resources, and how those choices are related to government policy and market outcomes, such as prices and output. Recommended: Successful completion of MTH 070 or above and WRI 121Z placement.

ECO 202Z Principles of Macroeconomics

Examines the aggregate activity of a market economy, economic growth, inflation, unemployment, and the use of fiscal and monetary policy to address macroeconomic problems. Recommended: Successful completion of MTH 070 or above and WRI 121Z placement.

Education**EDU 251 Overview of the Exceptional Learner**

Introduction to diverse conditions of students with special needs in public schools. Identifies and defines the following areas of exception ability: learning disabilities, emotional and behavior disorders, intellectual disabilities, severe and multiple disabilities, autism, health impairments, physical disabilities, communication disorders, vision impairments, hearing loss, traumatic brain injury, and talented and gifted.

EDU 252 Classroom Management

Introduces several approaches to proactive classroom management. Strategies for setting up an appropriate room environment and establishing procedures, systems, and rules will be introduced and practiced. Behavior management will also be introduced and practiced. Recommended: Prior study in EDU.

EDU 280 Coop Wk Exp: Education

On-the-job, paid or volunteer, experiences which allow for the application and development of knowledge, skills, and attitudes learned through the on-campus program. Cooperative work experience is offered for variable credit based on the student's objectives. Instructor permission is required. All students must successfully pass a criminal background check.

Emergency Medical Technician

EMT 152 Emergency Medical Technician Part 2

This is course is the second half of the course which prepares students for the National Registry certification and licenser in Oregon as an Emergency Medical Technician. This course is designed to develop a student's skills in the recognition of symptoms of illness, injuries, and the proper procedures of emergency care. NOTE: Successful course completion does not guarantee National Registry certification or licenser in the State of Oregon. Prerequisite: Permission of the Course Director is required to continue. EMT 151 and EMT 151L with a grade of "C" or better. Corequisite: EMT 152L

EMT 152L Emergency Medical Technician Part 2 Lab

Laboratory activities relating to EMT 152. Corequisite: EMT 152.

EMT 177 Emergency Response Communication/Documentation

Documentation of the elements of patient assessment, care, and transport; communication systems; radio types; reports; codes; and principles of therapeutic communication.

English

ENG 106Z Introduction to Poetry

The study of poetry invites us to delve into the biggest questions about life and culture alongside the seemingly smallest issues of words and sounds. English 106Z provides opportunities for the appreciation of poetry, including deeper awareness of craft and insight into how reading poetry can lead to self-enrichment. Students read a variety of types of poetry and poetic forms, from diverse perspectives and eras, and develop their skills in discussion, literary analysis, and critical thinking. Recommended: 100-Level reading and WRI121.

Environmental Science

ENV 170 Environmental Science

Examines major environmental questions facing the world today. Includes population growth, matter and energy resources, ecosystems, pollution, and environment and society. Explores a broad range of environmental issues including sustainability, the interconnection of the economy with ecosystem, short-term versus long-term gains, and the trade-offs in balancing problems and solutions. Recommended: Placement into WRI 095. Corequisite: ENV 170L.

ENV 170L Environmental Science Lab

Laboratory activities relating to ENV 170. Corequisite: ENV 170.

Emergency Response and Operations

ERO 110 Emergency Vehicle Operator (EVOC)

This course introduces safe vehicle operation by stressing theory and principles of defensive driving in both emergency and non-emergency situations. Oregon motor vehicle laws pertinent to the operation of emergency vehicles is included in the course. This class differentiates between emergency driving and non-emergency driving. Student will learn to identify safety considerations for operating emergency vehicles and will be able to demonstrate knowledge and skills in safely operating and driving an emergency vehicle. Prerequisite: 18 years of age with a valid driver's license and insurable.

ERO 115 Crisis Intervention

An introduction to crisis response for first responders of an emergency or significant incident or event. This course will assist those who are assisting people in the immediate aftermath of a disaster or other type of tragedy. Students will learn how to reduce initial stress, gather information, debrief, and produce an environment of connectedness to empower communities to heal in the recovery process.

ERO 169 Rescue Practices

Provides technical information on various rescue situation. Covers equipment, tools, trench rescue, shoring, rope and knots, warehouse searches, outdoor searches, rescue in situations involving elevation differences, patient packaging, water and ice rescue, and vehicle extrication. Prerequisite: currently enrolled in EMT 151, EMT 151 with a grade of "C" or better or Oregon EMT licenser.

Fire Science (Structural)

FRP 112 Fire Fighter II

This advanced level fire training program prepares the student for the skill competencies for the Firefighter II certification process. The structure firefighter training includes Level 5 Advanced Firefighter Training. Prerequisite: FRP 111.

FRP 121 Fire Behavior and Combustion

This course explores the theories and fundamentals of how and why fires start, spread, and are controlled. Instruction in fire behavior and control, matter and energy, units of measurement, flammable liquids, toxic gases, chemicals, radioactive hazards, and firefighting techniques.

FRP 232 Building Construction for Fire Protection

Covers building classification and structural features, types of material used in buildings, flame spread and fire retardants, and representative fire loads.

Geography

GEO 107 Human Cultural Geography II

Introduces the study of human cultural geography with a focus on developing nations. Regional topics include the Middle East, Asia, Africa, and the Pacific Islands. Recommended: WRI 121Z placement.

Geographic Information Systems

GIS 280 Coop Wk Exp: Geographic Information Systems

Offered for variable credit. On-the-job (paid or volunteer) experience that allows for the application and development of knowledge, skills, and attitudes assimilated through the on-campus program. The seminar introduces fundamental aspects of the industry to the student. The student's objectives determines the number of credits. Instructor permission is required prior to registering and the student must source a job-site or choose from a list of local-partners for the course.

Health Studies

HEA 100 Nursing Assistant I

This course provides the foundation for student success with state certification testing, workforce training aimed at entry-level positions. Students will practice learned techniques in personal care, dining, emergency care, rehabilitation and interpersonal skills with emphasis on safety, infection control, legal and ethical considerations while in the acute and sub-acute facilities. Successful course completion does not guarantee state certification. Corequisites: HEA 100C.

HEA 100C Nursing Assistant Clinical

This course provides the foundation for student success with state certification testing, workforce training aimed at entry-level positions. Students will practice learned techniques in personal care, dining, emergency care, rehabilitation and interpersonal skills with emphasis on safety, infection control, legal and ethical considerations while in the acute and sub-acute facilities. Successful course completion does not guarantee state certification. Corequisites: HEA 100.

HEA 125 First Aid & Industrial Safety

Presents an overview of industrial safety regulations, accident prevention, ergonomics, hazardous materials, first aid, and adult CPR. Successful students will receive a First Aid and Adult CPR card.

Health Information Management

HIM 104 Intro to Health Data and Content I

This course provides an overview of healthcare delivery systems and health information fields. Includes origin and uses of health records, admitting functions, filing and numbering systems, interdepartmental communication, and computation of basic census data, micrograph concepts, and electronic data interchange. Introduction to application of healthcare procedures via a web-based virtual lab.

HIM 105 Legal & Ethical Aspects of Healthcare

Introduces the legal basis for medical practice, confidentiality, HIPAA, voluntary and involuntary release of medical information, professional liability, consents for treatment and other procedures, and medical-ethical issues.

HIM 180 Coop Wk Exp: HIM Prof Prac Exp I

Provides practicum experience in health information management functions utilizing medical record technologies in a classroom simulation and/or under the direct supervision of facility personnel in local health care facilities.

HIM 205 Health Info and Data Governance

This course applies qualitative and quantitative analysis of the health record in all settings that are based on accreditation, standards, licensing, and certifying agencies. Students will learn the core enterprise information management (EIM) domains and associated practice for health information and data governance. Prerequisite HIM 204.

HIM 210 Disease Process

This course introduces the student to concepts related to human diseases. The most common diseases and disorders of each body system are presented along with a review of the anatomy and physiology pertinent to the content. Discussion will include cause, pathological features, physical signs and symptoms, diagnostic procedures, and current preferred treatment. Additionally, the effects of aging on the system and the relationship of aging to diseases are presented. Recommended: MDA 101 and MDA 102. Prerequisites: MDA 128 or BIO 231.

ASSOCIATE OF APPLIED SCIENCE OR 1-YR CERTIFICATE

HEALTH INFORMATION MANAGEMENT



100% ONLINE
(OR A COMBINATION OF
ONLINE & CLASSROOM)



CAREERS

- Electronic Health Records Clerk
- Medical Records Technician
- Medical Administrative Assistant
- Medical Records Specialist
- Medical Transcriptionist
- Medical Secretary

OREGON MEDIAN SALARY:
\$60,667
KLAMATH REGION
\$66,281

APPLY NOW: [HTTPS://WWW.KLAMATHCC.EDU/HIM](https://www.klamathcc.edu/him)

HIM 231 CPT Coding

This course expands on the understanding of coding and classification systems, particularly CPT and HCPCS, in order to assign valid procedure codes. Students will analyze current regulations and established guidelines in clinical classification systems; determine the procedures that require; interpret conventions, formats, instructional notations, tables, and definitions of the classification system and/or nomenclature to select diagnoses, conditions, problems or other reasons for the encounter that require coding, and determine the sequence of diagnoses and procedures.

HIM 234 Advanced Medical Coding

This course promotes the advanced understanding of coding and classification systems, particularly ICD-10-CM, and CPT and HCPCS, and introduction and application of ICD-10-PCS, in order to assign valid diagnostic and procedure codes. Diagnostic and procedural coding continues at an advanced level of hands-on application and classification with considerable time spent abstracting, coding, and indexing diagnostic and procedure codes. Prerequisites: HIM 131 and HIM 231. Corequisite: HIM 234L.

HIM 234L Advanced Medical Coding Lab

Hands on activities associated with HIM 234 Advanced Medical Coding didactic class. This lab will allow students to participate in coding software [encoder] and inpatient case studies; students will have to abstract information for code assignment from diagnosis, procedures, and therapies from the medical record via case study or simulated software. Corequisite: HIM 234.

HIM 280 Coop Wk Exp: HIM Prof Prac II

Provides practicum experience in health information management functions utilizing medical record technologies in a classroom simulation and/or under the direct supervision of facility personnel in local health care facilities.

Health & Physical Education

HPE 207 Stress Management

Students learn the basis for various components of stress and how to recognize and cope appropriately with physical, occupational, social, school, and environmental stressors. The course emphasizes achieving lifestyle balance and shows students how to develop and practice physiologic relaxation techniques and stress reduction methods.

HPE 225 Nutrition

A study of food and nutrition, including how they relate to health and disease. Students are exposed to basic nutrition including nutrient needs, how nutrients function in the body, energy balance, and diet planning for various medical conditions. Provides an in-depth look at current topics and the American diet.

HPE 260 Anatomical Kinesiology

This is an introduction to the science of human movement (kinesiology). The class explores the anatomical elements such as muscle action and joint structure and function involved in the gross motor movement. Major emphasis will be on structural anatomy, primary movers of each joint, and muscle utilization for specific sport actions. Prerequisites: BIO 231 and WRI 095 or WRI 121Z or placement into WRI 095.

HPE 295 Health & Fitness for Life

Explores the role of wellness, physical fitness, stress, nutrition, and cardiovascular health in promoting an individual's health and well-being. Fitness testing and fitness lab are included.

History

HST 103 Western Civilization III: 1800 to Present

Studies Europe in the 19th and 20th centuries. Topics include the Industrial Revolution, nationalism, socialism, the two world wars, the Russian Revolution, Nazism, and globalization. HST 101, 102, and 103 may be taken out of sequence. Recommended: WRI 121Z placement.

HST 201M United States History I

Surveys North American history from the Age of Exploration through the Civil War. Studies include political, social, and economic trends and events. Recommended: Placement scores at WRI 121Z.

HST 203M United States History II

Surveys North American history from Reconstruction through the present. Studies include political, social, and economic trends and events. Recommended: Placement scores at WRI 121Z.

Medical

MDA 101 Medical Terminology I

Covers medical terminology prefixes, suffixes, word roots, and abbreviations by body system.

MDA 102 Medical Terminology II

Covers medical terminology prefixes, suffices, word roots, and abbreviations by body system. Prerequisite: MDA 101 with a grade of "C" or better.

MDA 129 Anatomy & Physiology for Health Science Professional II

Provides the conceptual framework, factual knowledge, and analytical skills needed to pursue a career in Allied Health. Students will examine the endocrine system; blood: the heart and heart disease; including blood vessels and circulation; lymphatic system and tissue; respiratory system; digestive system; metabolism, nutrition and body temperature; body fluids; urinary system; male and female reproductive system; development and birth; and heredity and heredity disease. Note: This course will not transfer as a science course. Recommended: MDA 102. Prerequisite: MDA 128.

Manufacturing Engineering Technology

MET 102 Basic Engineering Materials

Introduces materials and metallurgy to include structure, selection, and use. Survey of materials used in industry and their physical and chemical attributes as they relate to properties, corrosion, and engineering applications. Major consideration given to metal alloys. Introduction to polymers, ceramics, and composites included. Recommended: WLD 101.

MET 242 CAD for Mechanical Design II

Instruction and practice of AutoCAD (mechanical) software in 3D environment. Utilize 3D software, practice to develop into an apprentice level computer aided design (CAD) technician. Prerequisite: MET 241. Corequisite: MET 242L.

MET 242L CAD for Mechanical Design II Lab

Laboratory activities related to MET 242. Corequisite: MET 242.

MET 243 CAD for Mechanical Design III

Instruction and practice of SOLIDWORKS software in solid modeling design environment. Utilize 3D solid modeling practice to develop into an apprentice level computer aided design (CAD) technician. Prerequisite: MET 242. Corequisite: MET 243L.

MET 243L CAD for Mechanical Design III Lab

Laboratory activities related to MET 243. Corequisite: MET 243.

Manufacturing

MFG 221 Manufacturing Process II - CNC

An introductory course in metal removal processes emphasizing drilling, milling, and lathe processes. Will include tool grinding. Emphasis on computer numerically controlled (CNC) concept and machining. Prerequisite: MFG 120. Corequisite: MFG 221L.

MFG 221L Manufacturing Process II - CNC Lab

Laboratory activities related to MFG 221. Corequisite: MFG 221.

MFG 222 Manufacturing Process III - CNC

MFG 222 is a follow-up course in metal removal processes - emphasis on conversational NC and CNC drilling, milling, and lathe processes. Will include tool grinding. Course stress will be on CNC (conversational) process, planning, concepts and machining. All lab practice will be offline on simulators and online using conversational NC and CNC machines. Prerequisite: MFG 221. Corequisite: MFG 222L.

MFG 222L Manufacturing Process III - CNC Lab

Laboratory activities related to MFG 222. Corequisite: MFG 222.

Multimedia

MMT 239 Digital Drawing/Adobe Illustrator

Introduces the basics of digital illustration working with both vector graphics and photo editing. Applies tablet technology and screen-based drawing to create digitized graphic elements such as image header, sidebar, banner, logo, and other elements commonly used design. Uses various software platforms, but focuses mainly on Adobe Digital Illustrator. Recommended: ART 131. Corequisite: MMT 239L.

MMT 239L Digital Draw/Adobe Illustrator Lab

Laboratory activities related to MMT 239. Corequisite: MMT 239.

MMT 240 Digital Photography & Photoshop

Students will learn the basics of digital photography, composition, and manipulation of images while using Adobe Photoshop. Investigate competent compact digital and DSLR camera handling techniques. The course emphasizes exposure control, digital management, image editing, printing and presentation. Examines important photographic themes, lighting, and composition. Use Photoshop in acquiring, preparing, manipulating, storing, outputting and/or uploading and displaying digital images. Requires access to a camera with manual exposure controls, DSLR (digital single-lens-reflex) cameras are preferred. Corequisite: MMT 240L.

ASSOCIATE OF APPLIED SCIENCE OR 1-YR CERTIFICATE



100% ONLINE
(OR A COMBINATION OF
ONLINE & CLASSROOM)



CAREERS

- Marketing Manager
- Web Developer
- Photographer
- Media & Communication Worker
- Film & Video Editor
- Web Developer & Digital Designer

OREGON MEDIAN SALARY:
\$113,794
KLAMATH REGION
\$113,794

APPLY NOW: [HTTPS://WWW.KLAMATHCC.EDU/DMD](https://www.klamathcc.edu/dmd)

Mathematics

MTH 020 Pre-Algebra

This course will cover ratios, rates, proportion, percent, measurement, and introduces the concepts of basic statistics, charts, and graphs. In addition the basic concepts of elementary algebra will be covered. Scientific calculator with fraction capabilities required. Prerequisite: MTH 010 or placement into MTH 020.

MTH 052 Math Review for Higher Placement

Math Review for Higher Placement is an individually paced course in that students in the same class are working on different skills at the same time. Students will be working on mathematics skills assigned by the instructor ranging from Math 010 up to Math 111Z. Assignment of coursework will be based upon skills assessments and program goals. The course is designed for students who need to take several math courses before entering a program and students who have seen the material before and need to "fill in the gaps." At the end of the course each student will be provided a math placement determined by their course performance. Recommended: Recent placement into MTH 010, MTH 020, or MTH 070 with remaining access to MyMathTest placement test. Prerequisites: Placement into MTH 010, MTH 020, or MTH 070.

MTH 070 Elementary Algebra

The following topics are covered: Fundamental properties of algebra, solutions of linear and quadratic equations, order of operations, rules of exponents, arithmetic operations of polynomials, factoring of polynomials, the two-coordinate graphing plane, point plotting, graphing of linear equations, and basic geometric and statistical formulas and problem solving. Concepts will be introduced numerically, graphically, and symbolically. Results will be communicated in oral and written form. Scientific calculator with fraction capabilities required. Prerequisite: MTH 020 with a grade of "C" or better or placement into MTH 070.

MTH 095 Intermediate Algebra

The following topics are covered: Fundamentals of algebra, factoring of polynomials, solving quadratics using various techniques, simplifying of rational expressions, solving rational equations, simplifying of radical expressions, solving radical equations, definition of functions, evaluation of functions, and graphing of quadratics. Word problems will be included throughout the course. Concepts will be introduced numerically, graphically, and symbolically. Results will be communicated in oral and written form. Scientific calculator with fraction capabilities required. Prerequisite: MTH 070 with a grade of "C" or better or placement into MTH 095.

Scan for More Info

Get a Transfer Degree!

ASSOCIATE OF ARTS,
MATHEMATICS EMPHASIS



MTH 105M Math in Society

An exploration of present-day applications of mathematics focused on developing numeracy. Major topics include quantitative reasoning and problem-solving strategies, probability and statistics, and financial mathematics; these topics are to be weighted approximately equally. This course emphasizes mathematical literacy and communication, relevant everyday applications, and the appropriate use of current technology. Prerequisites: MTH 020 with a grade of 'C' or better and with co-current registration into MTH 105Q, or placement into MTH 070 with co-current registration into MTH 105Q, or placement into MTH 095 or MTH 111Z.

MTH 105Q Corequisite for Math in Society

This is a math course that provides additional instruction and support for MTH 105Z through math and study skills building and through just in time remediation necessary to be successful in MTH 105Z. Students who place into MTH 095 or MTH 105Z or MTH 111Z are not required to take MTH 105Q, but may still elect to take MTH 105Q. Students who are taking MTH 105Z and have earned a grade of 'C' or better in MTH 020 or who have been placed into MTH 070 take this class as a corequisite to MTH 105Z. Corequisite: MTH 105Z.

MTH 105Z Math in Society

An exploration of present-day applications of mathematics focused on developing numeracy. Major topics include quantitative reasoning and problem-solving strategies, probability and statistics, and financial mathematics; these topics are to be weighted approximately equally. This course emphasizes mathematical literacy and communication, relevant everyday applications, and the appropriate use of current technology. Prerequisite: Completion of MTH 020 with a grade of 'C' or better and enroll in MTH 105Q at the same time; or, placement into MTH 070 and enroll in MTH 105Q at the same time; or, completion of MTH 070 with a grade of 'C' or better; or, placement into MTH 095 or MTH 111Z.

MTH 111Z Pre-Calculus I: Functions

A course primarily designed for students preparing for trigonometry or calculus. This course focuses on functions and their properties, including polynomial, rational, exponential, logarithmic, piecewise-defined, and inverse functions. These topics will be explored symbolically, numerically, and graphically in real-life applications and interpreted in context. This course emphasizes skill building, problem solving, modeling, reasoning, communication, connections with other disciplines, and the appropriate use of present-day technology. Prerequisite: MTH 095 with a grade of 'C' or better or placement into MTH 111Z.

MTH 112Z Pre-Calculus II: Trigonometry

A course primarily designed for students preparing for calculus and related disciplines. This course explores trigonometric functions and their applications as well as the language and measurement of angles, triangles, circles, and vectors. These topics will be explored symbolically, numerically, and graphically in real-life applications and interpreted in context. This course emphasizes skill building, problem solving, modeling, reasoning, communication, connections with other disciplines, and the appropriate use of present-day technology. Prerequisite: MTH 111Z with a grade of 'C' or better.

MTH 213 Foundations of Elementary Math III

This course is for prospective K-8 teachers. Emphasizes informal geometry, transformational geometry, and measurement systems. Prerequisite: MTH 095 with a grade of "C" or better or MTH 111Z with a grade of "C" or better or placement into MTH 111Z.

MTH 244 Statistics II

Covers inferential statistics with an emphasis on applications. Topics include estimation of proportions and means for a population, inferences from chi-square distributions, one way and two way analysis of variance (ANOVA), the F distribution, time series analysis, regression and correlation, and hypothesis testing. Working knowledge of Excel required. Prerequisite: STA 243Z with a grade of 'C' or better.

MTH 251Z Differential Calculus

This course explores limits, continuity, derivatives, and their applications for real-valued functions of a single variable. These topics will be explored graphically, numerically, and symbolically in real-life applications. This course emphasizes abstraction, problem-solving, modeling, reasoning, communication, connections with other disciplines, and the appropriate use of technology. Prerequisite: MTH 112Z with a grade of 'C' or better.

MTH 252Z Integral Calculus

This course explores Riemann sums, definite integrals, and indefinite integrals for real-valued functions of a single variable. These topics will be explored graphically, numerically, and symbolically in real-life applications. This course emphasizes abstraction, problem-solving, modeling, reasoning, communication, connections with other disciplines, and the appropriate use of technology. Prerequisite: MTH 251Z with a grade of 'C' or better.

MTH 254 Vector Calculus

Vectors, differentiation, and integration of vector-valued functions. Partial derivatives, multiple integrals, and their applications. Prerequisite: MTH 252Z with a grade of 'C' or better.

Music

MUS 206M History of Rock Music

Examines rock music's roots and development, its innovators and significant events through a cultural, as well as musical, perspective. Prerequisite: WRI 121Z.

Nursing

NSG 112 Health & Illness Concepts II (didactic)

This course builds upon health and illness concepts across the lifespan. Concepts covered are related to community health, family, sexuality, reproduction, health, wellness, illness, development, oxygenation, intracranial regulation, mood, stress and coping, behaviors, immunity, inflammation, grief and loss and supervising care within scope. Corequisite: NSG 112C.

NSG 112C Health & Illness Concepts II (application)

The focus of this course is to provide safe, evidence-based nursing care for patients with chronic condition, across the lifespan in a variety of settings. This course builds upon curricular concepts. This course is a combination of clinical experience and simulation laboratory. Corequisite: NSG 112.

NSG 213 Professional Concepts (didactic)

This course provides opportunities to incorporate informatics, to apply evidence-based practice, and to explore quality improvement opportunities using the National Patient Safety Goals. Prerequisite: NSG 211 and NSG 211C. Corequisite: NSG 213C.

NSG 213C Prof Concepts (appl) - Capstone Exp

Capstone Practicum Experience (CPE): This course is the culmination of the care and management of the holistic, diverse, complex and/or unstable client. Emphasis is on the refinement of clinical decision making skills, achievement of clinical competence, and demonstration of professional nursing practice. Corequisite: NSG 213.

Physical Education

PED 181A Beginning Weight Training

Stresses the proper techniques of weight lifting and the development of muscular strength and endurance. Individual programs developed which allow for body and strength differences and safety in lifting.

PED 181B Intermediate Weight Training

A total body conditioning course that emphasizes intense free weight exercises set to music and incorporates core conditioning. Featured equipment includes dumbbells, body bar, resistance bands, and body weight. Focus placed on proper techniques of weight lifting and the development of muscular strength and endurance. Individual programs developed which allow for body and strength differences and safety in lifting.

PED 182C Beginning Fitness & Walking

Beginning level, self-paced walking programs and a variety of conditioning exercises for specific body areas. Provides instruction for integrating walking into a lifetime fitness program.

PED 186D Ballroom Dance I

Introduces the fundamental principles of ballroom dance. Places emphasis on proper partnering, style, and phrasing. Focuses on elementary steps of foxtrot, waltz, swing, cha-cha, and rumba.

Philosophy

PHL 204M Philosophy of Religion

Explores various philosophical perspectives on religion and issues traditionally taken up by religion, including the existence and attributes of God, faith, reason and mysticism, religion and science, religion and morality, religious language, and life after death. Prerequisite: WRI 121Z.

Physics

PHY 101 Fundamentals of Physics I

Laboratory science course designed for non-science majors. First term of a three-term series. A conceptual study of physics. Includes introduction to the scientific method, study of motion, mechanics, vectors, energy, simple machines, satellite motion, and atomic structure. Prerequisites: MTH 070 or MTH 095 or MTH 111Z or placement into MTH 070 or MTH 095 or MTH 111Z and WRI 095 or WRI 121Z or placement into WRI 121Z. Corequisite: PHY 101L.

PHY 101L Fundamentals of Physics I Lab

Laboratory activities relating to PHY 101. Corequisite: PHY 101.

PHY 213 General Physics III (Calculus-base)

Third term of a three-term series. Topics include concepts in resistance, inductance, capacitance, and their application in RLC circuits; magnetic and electromagnetic fields; relativity; quantum mechanics; atomic physics; nuclear physics and their practical application. Recommended for laboratory science majors, engineering majors, and pre-professional students in all medical fields. Prerequisite: PHY 212. Corequisite: PHY 213L.

PHY 213L Gen Physics III Lab

Laboratory activities relating to PHY 213. Corequisite: PHY 213.

Psychology

PSY 101 Psychology & Human Relations

Focuses on practical and personal applications of psychological principles. Encourages applications of psychological principles to daily living and to human interactions such as work, leisure, school, and relationships. This course is designed for students who are not majoring in psychology. This course transfers as a general elective.

PSY 201M Introduction to Psychology I

Introduction to the science and application of psychology. Emphasis will be placed on psychological concepts, theories, and principles related to: Research Methods, Behavioral Neuroscience, Consciousness, Sensation/ Perception, Learning, Memory, Thinking and Intelligence, and related topics. Prerequisite: WRI 121Z.

PSY 202Z Introduction to Psychology II

Introduction to the science and application of psychology. Emphasis will be placed on psychological concepts, theories, and principles related to: Personality, Social Psychology, Health and Well-Being, Motivation and Emotion, Disorders, Therapies, Lifespan Development, and related topics. Recommended: PSY 201Z. Prerequisite: WRI 121Z.

PSY 226 Abnormal Psychology II

Overview of legal and ethical issues related to abnormal psychology. Specific disorders covered include dissociative, substance use, schizophrenia, childhood and adolescent. Suicide is examined as a topic specific to abnormal psychology. Various treatment modalities are also reviewed. Prerequisite: PSY 225.

PSY 233 Psychology of Violence and Aggression

This course addresses the developmental, social, physiological, and cultural aspects that contribute to violence and aggression as well as the legal issues involved. Includes an overview of the theories of aggression, as well as factors influencing family violence, violent children, mob mentality, hate crimes, war and terrorism, stalking, sex crimes, and murder. Prerequisite: Successful completion of WRI 121Z, or instructor approval.

PSY 235 Human Growth & Development I

A biosocial study of human development from conception to adolescence. Discusses the biological and social processes, i.e., cognition, personality, emotion, and social, affecting the developing child. Applications to health care, family, and education are discussed. Recommended: Previous coursework in psychology.

PSY 236 Human Growth & Development II

A psychological study of the continuing development of the human being from adolescence through old age and death. Discussion focuses on the social and healthcare issues of adulthood. Applications to healthcare, family, and social policy. Prerequisite: PSY 235.

PSY 280 Coop Wk Exp: Psychology

On-the-job, paid or volunteer, experiences which allow for the application and development of knowledge, skills and attitudes learned through the on-campus program so that the student can learn all aspects of the industry. Cooperative work experience is offered for variable credit based on the student's objectives. Instructor permission is required and the student must locate a job site for the course.

Spanish

SPA 101M First Year Spanish I

First in a three-course series designed to develop basic communication skills in oral and written Spanish. Introduces learners to the rich culture of the Spanish-speaking world, including listening, speaking, reading, writing, pronunciation, structure, vocabulary, and culture. NOTE: This course is a stand-alone course. It does not align with the Spanish series.

SPA 103 First Year Spanish III

Third in a three-course series designed to develop basic communication skills in oral and written Spanish. Introduces learners to the rich culture of the Spanish-speaking world, including listening, speaking, reading, writing, pronunciation, structure, vocabulary, and culture. Prerequisite: SPA 102.

Statistics

STA 243Z Elementary Statistics I

A first course in statistics focusing on the interpretation and communication of statistical concepts. Introduces exploratory data analysis, descriptive statistics, sampling methods and distributions, point and interval estimates, hypothesis tests for means and proportions, and elements of probability and correlation. Technology will be used when appropriate. Prerequisite: MTH 095 with a grade of 'C' or better or MTH 105 with a grade of 'C' or better or MTH 111Z with a grade of 'C' or better or placement into MTH 111Z.

Surgical Technology

SUR 201C Operating Room Clinical I

The Operating Room Clinical I course is designed to provide the student with exposure to community-based practice in order to develop competence as an entry-level surgical technologist. Students are assigned to a surgical suite to practice all skills related to the surgical technologist within the perioperative setting under the supervision of a facility-designated preceptor. Emphasis will be placed on the surgical technologist in the scrub role. Prerequisites: SUR 135, SUR 135L, SUR 150, SUR 150L with a grade of "C" or better. Corequisite: SUR 202.

SUR 202 Operating Room Seminar I

Students in the Operating Room Clinical I course will meet once a week with a surgical technology instructor to discuss progress and solve problems in clinical-related issues. Prerequisites: SUR 135, SUR 135L, SUR 150, SUR 150L with a grade of "C" or better. Corequisites: SUR 201C.

SUR 203 Professional Practice in Surgery

This course focuses on the professional practice in surgery, equipping students with essential knowledge and skills to excel in the field. It covers effective communication, teamwork, and career advancement in surgical technology. Students will explore ethical principles, legal framework and real-world scenarios to make informed decisions that prioritize patient safety and interdisciplinary collaboration. The course emphasizes clear communication, active listening, conflict resolution, and effective teamwork strategies within the surgical setting. Assess avenues of growth, specialization, and progression into management and leadership roles. Develop skills to evaluate sentinel event and address ethical challenges in the surgical setting, promoting improved patient safety and quality of care. Prerequisites: SUR 135, SUR 135L, SUR 150, SUR 150L with a grade of "C" or better. Corequisites: SUR 201C, SUR 202.

SUR 220 Preparing for Board Certification I

The first of two courses that will prepare the surgical technology student to successfully participate in the National Board Certification Examination will review all subjects relating to surgical technology with an emphasis on test-taking strategies and skills. Topics covered will include medical terminology, anatomy and physiology, microbiology and infection control, the surgical patient and the surgical environment, wound management and asepsis, instrumentation and equipment, case preparation, and the professional aspects of surgical technology. Prerequisites: SUR 135, SUR 135L, SUR 150, SUR 150L with a grade of "C" or better. Corequisites: SUR 201C, SUR 202.

Work Experience

TEX 280 Coop Wk Exp: Seminar

Introduces students to the selection processes and procedures necessary to gain successful employment. Topics covered include: Job search techniques, networking, resumes, cover letters, thank-you letters, and interview techniques. Recommended: To be taken near completion of degree or certificate. Prerequisites: WRI 117 and WRI 121Z.

TEX 281 Coop Wk Exp: Cosmetology Seminar

Introduces students to the selection processes and procedures necessary to gain successful employment. Topics covered include: Job search techniques, networking, resumes, cover letters, thank-you letters, and interview techniques. Required to be taken at the end of the completion of the Cosmetology degree or certificate. Prerequisites: WRI 117 and WRI 121Z.

Wildland Fire Science

WFS 101 Wildland Firefighter 2

This course is designed as classroom and field training for the entry-level firefighter. The course addresses ICS organization; basic ICS terminology and ICS common responsibilities; human factors on the Fireline; safety orientation, firefighter preparedness, tools and equipment, firing devices, use of water, suppression, securing the control line, use of maps, scouting, hazardous materials and standards for survival. Provides instruction in the primary environmental factors that affect the start and spread of wildfire and the recognition of potentially hazardous situations.

Welding

WLD 101 Welding Processes & Applications

Introduction to Welding covers flat and horizontal positions with oxygen-acetylene welding OAW, stick SMAW, Mig GMAW on mild steel, Tig GTAW on aluminum, safety, setting up and shutdown. Suggested Corequisite: WLD 114.

WLD 114 Shielded Metal Arc Weld: Mild Steel I

Develops knowledge and manipulative skills in the use of E7018 mild steel electrodes when performing various welds in the flat, horizontal, and vertical positions. Corequisite: WLD 101.

WLD 115 Shielded Metal Arc Weld: Mild Steel II

Develop intermediate and advanced skills in shielded metal arc welding for success in the metal fabrication industry. Includes preparation of joints for proper setup and design using 1/4 inch and thicker mild steel. Prerequisite: WLD 114. Corequisite: WLD 253.

WLD 221 Gas Tungsten Arc Weld: Stainless Steel/Alum

Develops knowledge and manipulative skills while welding common joints in all positions on stainless steel and aluminum with the G.T.A.W. process. Prerequisite: WLD 101.

WLD 253 Welding Cert Practice 3/8 or 1 Inch Mild Steel

Practice for the American Welding Society Mild Steel Welding Certification tests using mild steel electrodes in the horizontal, vertical, and overhead positions. Prerequisite: WLD 114. Corequisite: WLD 115

WLD 261 Basic Fabrication

Develops fabrication knowledge and skills in selection and use of layout tools and equipment to assemble a fabrication project from given specifications. Prerequisite: WLD 102 and WLD 114.

Academic Spring Courses A - Z

WLD 280 Coop Wk Exp: Welding

On-the-job, paid or volunteer, experiences which allow for the application and development of knowledge, skills, and attitudes learned through the on-campus program. Cooperative work experience is offered for variable credit based on the student's objectives. Prerequisite: Instructor permission is required.

Writing

WRI 095 Intro to Expository Writing

Introduces college-level skills in writing paragraphs, essays, and reading critically. Students learn to revise for clarity, structural integrity, and correct grammar. Prerequisite: WRI 090 with a grade of "C" or better or placement into WRI 095.

WRI 100 Co-Requisite Writing

This course provides the support necessary for students to succeed in writing-intensive classes. It is mandatory for students who place in WRI 90 to enroll in WRI 95 and students who place in WRI 95 to enroll in WRI 121Z. The course is also an elective for students who need additional support to be successful in other courses, such as WRI 122Z, WRI 227Z, and discipline-specific courses. This course is graded on a pass (P) / no pass (NP) basis and is not computed in the GPA.

WRI 114 Intro to Electronic Research

Introduction to college-level electronic research, developing search strategies, selecting and evaluating appropriate sources, documentation and citation, and a thorough understanding of the economic, legal, ethical, and social issues surrounding electronic information retrieval. Recommended: WRI 095.

WRI 117 Intro to Technical Communication

Focuses on the specific writing needs of career and technical programs: instructions procedures, proposals, letters, memoranda, e-mail, work reports, and other work-related documents. Prerequisite: WRI 095 or WRI 121Z or placement into WRI 121Z.

WRI 121M Composition I

WR 121M engages students in the study and practice of critical thinking, reading, and writing. The course focuses on analyzing and composing across varied rhetorical situations and in multiple genres. Students will apply key rhetorical concepts flexibly and collaboratively throughout their writing and inquiry processes. Prerequisite: WRI 095 with a grade of 'C' or better or placement into WRI 121Z.

WRI 121Z Composition I

WRI 121Z engages students in the study and practice of critical thinking, reading, and writing. The course focuses on analyzing and composing across varied rhetorical situations and in multiple genres. Students will apply key rhetorical concepts flexibly and collaboratively throughout their writing and inquiry processes. Prerequisite: WRI 095 with a grade of 'C' or better or placement into WRI 121Z.

WRI 122Z Composition II

WRI 122Z builds on concepts and processes emphasized in WRI 121Z, engaging with inquiry, research, and argumentation in support of students' development as writers. The course focuses on composing and revising in research-based genres through the intentional use of rhetorical strategies. Students will find, evaluate, and interpret complex material, including lived experience; use this to frame and pursue their own research questions; and integrate material purposefully into their own compositions. Prerequisite: WRI 121Z with a grade of 'C' or better.

WRI 227Z Technical Writing

WRI 227Z introduces students to producing instructive, informative, and persuasive technical/professional documents aimed at well-defined and achievable outcomes. The course focuses on presenting information using rhetorically appropriate style, design, vocabulary, structure, and visuals. Students can expect to gather, read, and analyze information and to learn a variety of strategies for producing accessible, usable, reader-centered deliverable documents that are clear, concise, and ethical. Prerequisite: WRI 121Z with a grade of 'C' or better or WRI 122Z with a grade of 'C' or better.

WRI 243 Introduction to Creative Writing: Screenwriting

Introduces students to dramatic writing for the screen. Essential learning processes in the course include scene and dialogue craft exercises, developing strong characters and viable narrative structures, critical reading of screenplays and responding constructively to other students' work. Recommended: ENG 195. Prerequisite: WRI 095, or placement into WRI 121Z.

ARTS, DESIGN, AND TRANSFER

Express your creativity and transfer to a 4-year university with the Arts, Design, and Transfer career community. Earn a degree in Digital Media Design, English Literature, or other transfer degrees.

Explore KCC's general education offerings in art, philosophy, music, writing, and more.



Check out:

Associate of Arts Transfer - English Literature (AAT)